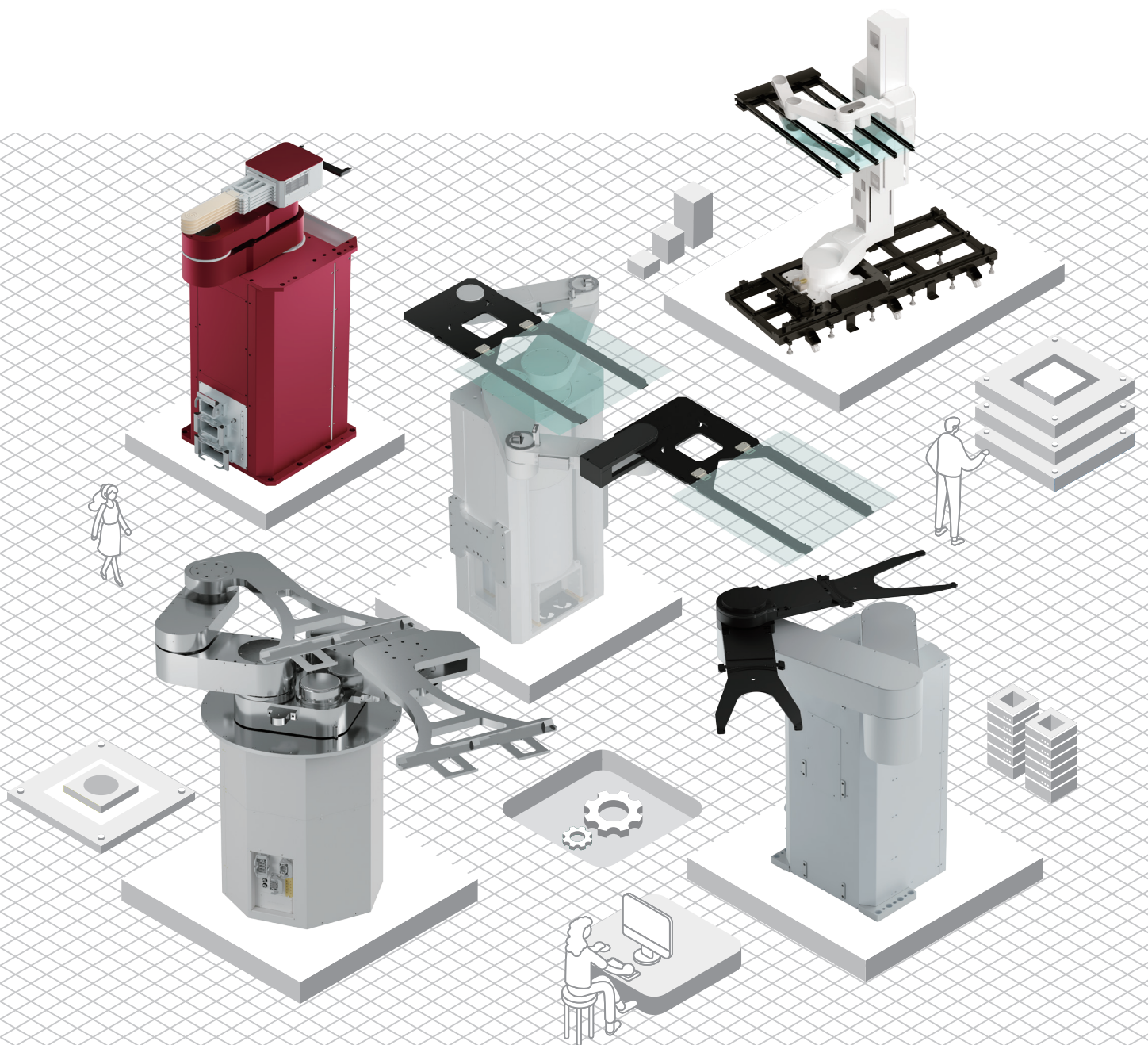


SAMICK THK

ROBOT Series

(Wafer Transfer, Industrial Transfer, Controller)



ROBOT Line-up

Wafer Transfer Robot



S-WTR



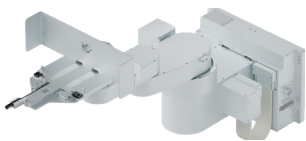
U-WTR



C-WTR



ALIGNER



FTR

Industrial Transfer Robot



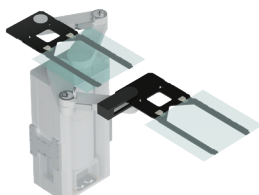
ITR-A4S



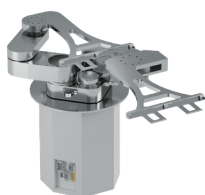
ITR-A6S



ITR-A8S



ITR-A4T



ITR-VS Vacuum Type

Controller



SRC-5C



SRC-5L



In various fields such as semiconductor, display, and secondary cell, we supply a variety of robot solutions, with cleanroom robots as the main focus, tailored to meet customer demands. We provide customers with the robots they desire, assisting industries that demand high levels of automation and precision in securing competitiveness.

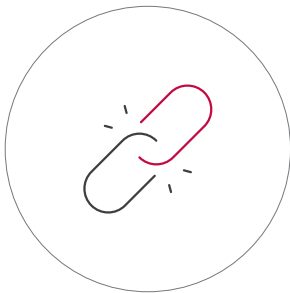
Features



Precision



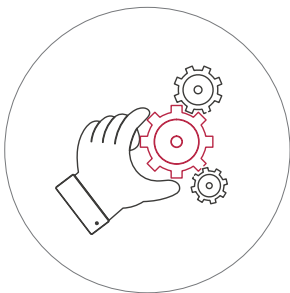
Reliability



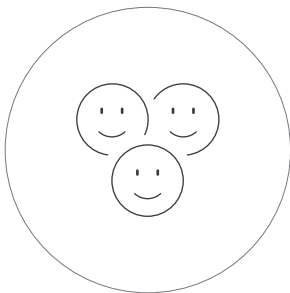
Durability



Clean Specifications



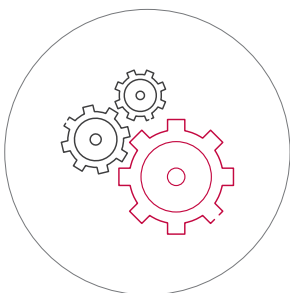
Customization



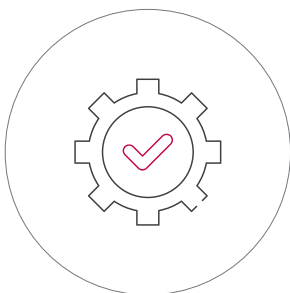
Service



Certified Control



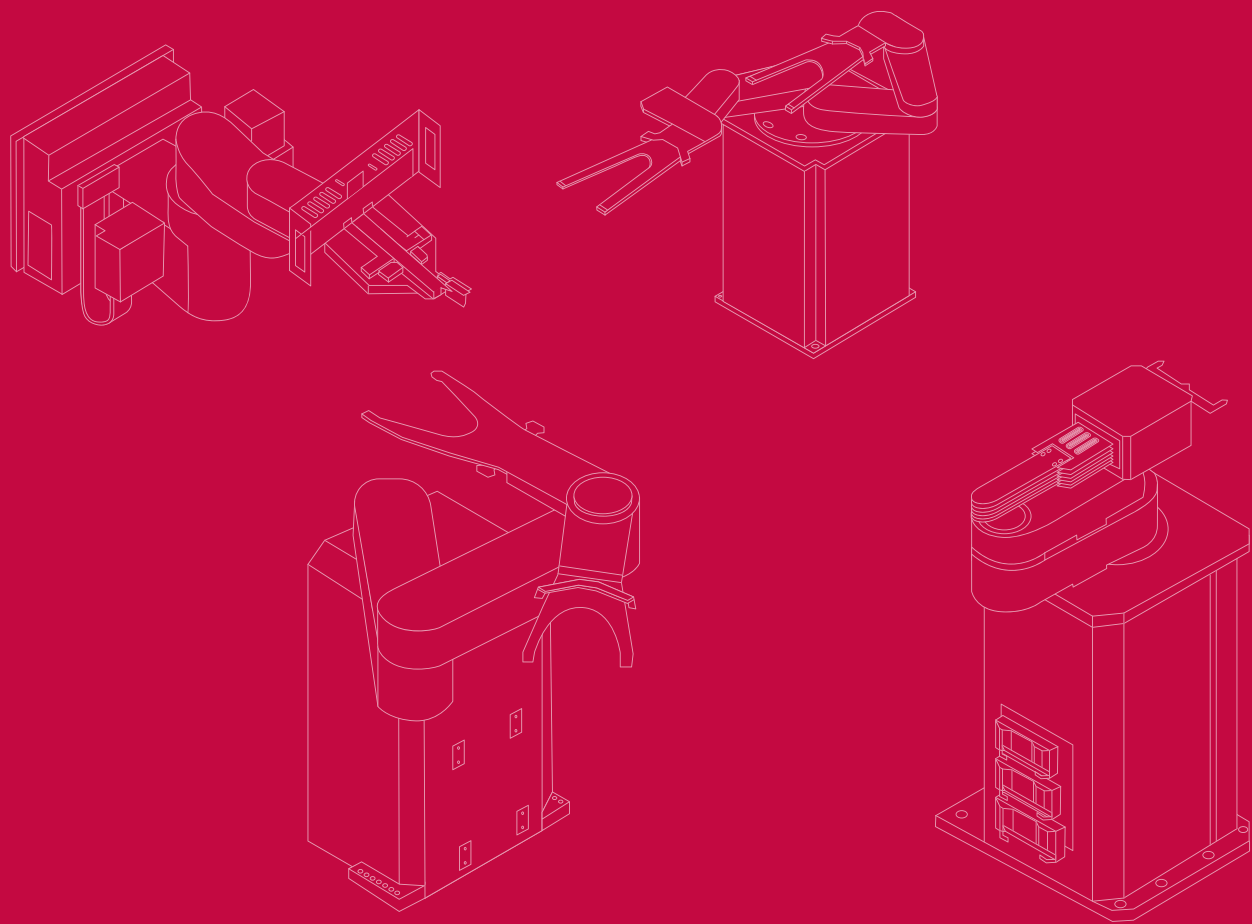
Multi-control



Stable Control Performance

Wafer Transfer Robot

- S-WTR (Smart SCARA)
- U-WTR (Universal SCARA)
- C-WTR (Compact)
- FTR (FOUP Transfer Robot)
- ALIGNER



Wafer Transfer Robot Line-up

Robot

ITEM	MODEL	CONTROLLER	SIZE
S-WTR (Smart SCARA)	WTR-AS3052	SRC-5C	300mm
	WTR-AS3053		
	WTR-AS3054		
	WTR-AS3056		
U-WTR (Universal SCARA)	WTR-AS3010		150mm
	WTR-AS3011		
C-WTR (Compact)	WTR-AS1526		200mm
	WTR-AD1521		
	WTR-AS2020		300mm
	WTR-AD2020		
	WTR-AS3020		
FTR	FTR-AS	-	-
ALIGNER	GRIP ALIGNER	Option	300mm
	NON GRIP ALIGNER		

Model Code

		30	300mm Wafer	0	Edge Hand
		20	200mm Wafer	1	Vacuum 2 Hand
		15	150mm Wafer	2	Vacuum Fix 5 Finger
				3	Vacuum Variable 5 Finger
				4	Vacuum Flip Hand
				6	Vacuum 1 Hand
				S	Special
		WTR - A S 30 5 2 S			
A	Atmosphere	1	U-WTR	S	Special Oder (Traverse Axis etc..)
V	Vacuum	2	C-WTR	A1	Aligner
		5	S-WTR	A2	Aligner + Aligner
S	Single Arm			T	Traverse
D	Dual Arm				

S-WTR Smart Wafer Transfer Robot

Summary

Smart-WTR is a 4-axis robot employing AC servo motors. It is a SCARA (Selective Compliance Assembly Robot Arm) type robot, where two Arm Links enable free movement of one Hand in the X-Y plane.

* Can accommodate 2 ports with a single robot that has a SEMI standard port spacing of 505mm or less - No need for movement

This robot is used for transporting and loading wafers within a 3D workspace centered around its installation location. It has independent drive axes, allowing for diverse and flexible movements within the working area during operations.

The motor is located inside the body, making maintenance convenient. The slim link structure allows for interference-free operation even in narrow spaces. It utilizes the AVS (Advanced Vibration Suppression) function to achieve high-speed movement. Finally, with stable motion, it can handle up to 5 wafers.

The Hand supports Vacuum type

Robot Specifications

SPECIFICATION	MODEL			
	S-WTR			
	WTR-AS3052	WTR-AS3053	WTR-AS3054	WTR-AS356
Structure	SCARA Type			
Arm Type	Single	Single	Single	Single
Degree of Freedom	4 Axis	5 Axis	5 Axis	4 Axis
Applicable Wafer Size	300mm	300mm	300mm	300mm
Payload	0.2Kg	0.2Kg	0.2Kg	0.2Kg
Position Repeatability	±0.05mm	±0.05mm	±0.05mm	±0.05mm
Hand Type	Vacuum + Mapping	Vacuum + Mapping	Vacuum	Vacuum
Work Range	J1 Axis(Z)	350mm	350mm	350mm
	J2, J3, J4 Axis	-170° ~ + 170°	-170° ~ + 170°	-170° ~ + 170°
	J5 Axis	-	2mm	-1° ~ + 180°
	J5 Axis	-	2mm	-
Velocity	J1 Axis	500 mm/s	500 mm/s	500 mm/s
	J2 Axis	250 deg/s	250 deg/s	250 deg/s
	J3 Axis	500 deg/s	500 deg/s	500 deg/s
	J4 Axis	380 deg/s	380 deg/s	380 deg/s
Cleanliness	Class 1			
Environment	Applicable Humidity/Temp.	Less than 80% RH / 0~40°C		
	Air(CDA)	-80 ~ -70kPa		
	Robot Mass	70Kg	70Kg	70Kg

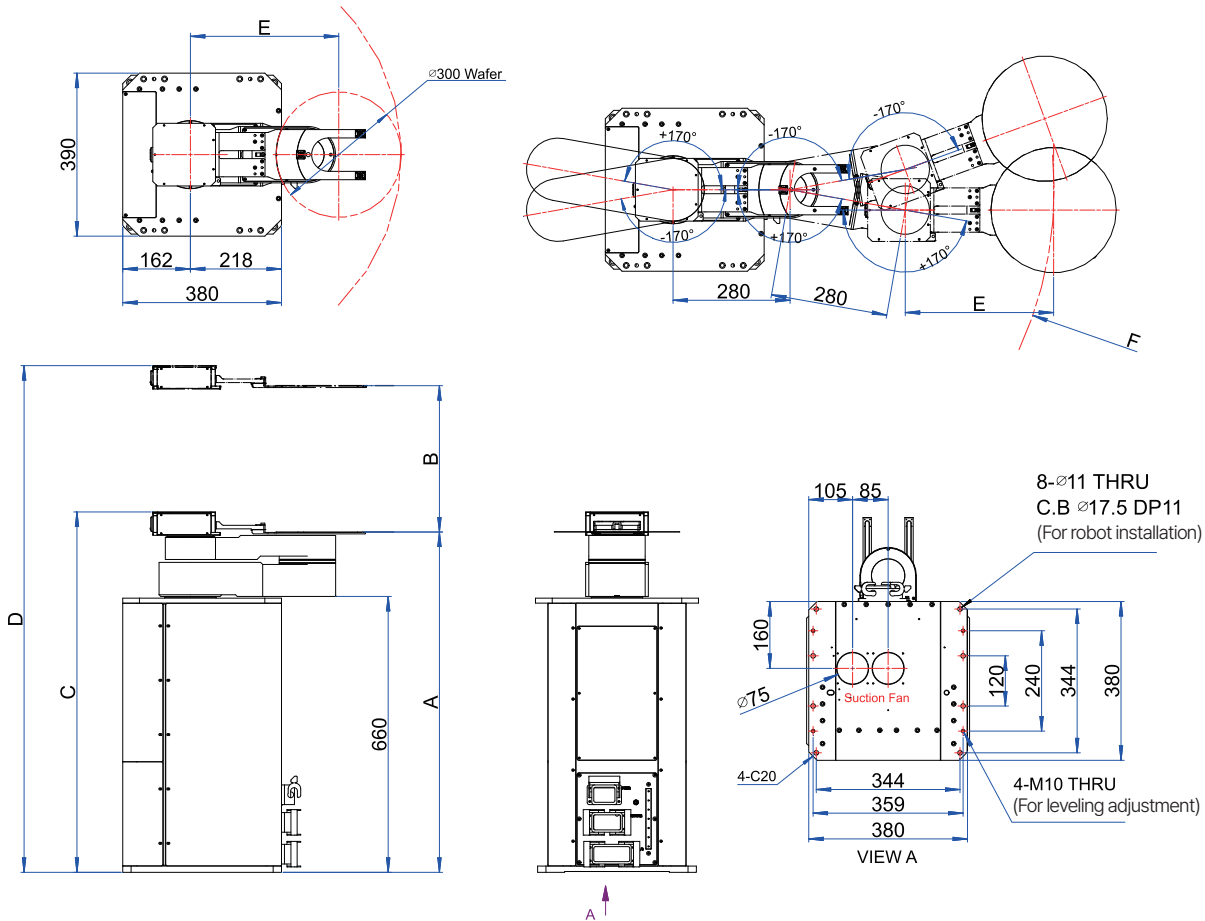
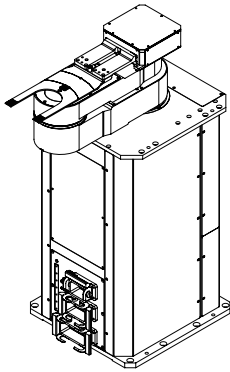
* Work Range may vary depending on customer's Hand specifications

Model



Robot Layout

SPECIFICATION		MODEL			
		S-WTR			
		WTR-AS3052	WTR-AS3053	WTR-AS3054	WTR-AS356
Passline	A	814.2	870.3	832.7	814.2
Z Stroke	B	350	350	350	350
Z Position	C	862.2	967.2	909.2	862.2
Z UP Position	D	1212.2	1317.2	1259.2	1212.2
Joint to Hand Center	E	335	302	384	287
Reach	F	R892	R859.1	R941	R844.1



U-WTR Universal Wafer Transfer Robot

Summary

Universal-WTR is a 5-axis robot employing AC servo motors. It is a SCARA (Selective Compliance Assembly Robot Arm) type robot, where two Arm Links allow free movement of two Hands in the X-Y plane.

This robot is used for transporting and loading wafers within a 3D workspace centered around its installation location. It has independent drive axes, allowing for diverse and flexible movements within the working area during operations.

With the drive of two Hands, the robot exhibits a dual-arm effect and is capable of high-speed movement.

The Hand supports Vacuum and Edge Grip types.

Robot Specifications

SPECIFICATION		MODEL	
		U-WTR	
		WTR-AS3010	WTR-AS3011
Structure		SCARA Type	
Arm Type		Single	Single
Degree of Freedom		5 Axis	5 Axis
Applicable Wafer Size		300mm	
Payload		0.2Kg (per blade)	0.2Kg (per blade)
Position Repeatability		±0.05mm	±0.05mm
Hand Type		Edge Grip	Vacuum
Work Range	J1 Axis(Z)	470mm	470mm
	J2, J3 Axis	-170° ~ +170°	-170° ~ +170°
	J4, J5 Axis	-190° ~ +190°	-190° ~ +190°
Velocity	J1 Axis(Z)	500 mm/s	500 mm/s
	J2 Axis	240 deg/s	240 deg/s
	J3 Axis	480 deg/s	480 deg/s
	J4, J5 Axis	360 deg/s	360 deg/s
Cleanliness		Class 1	
Environment	Applicable Humidity/Temp.	Less than 80% RH / 0~40℃	Less than 80% RH / 0~40℃
	Air(CDA)	Ø4, 0.7 Mpa	-80 ~ -70Kpa
	Robot Mass	70Kg	70Kg

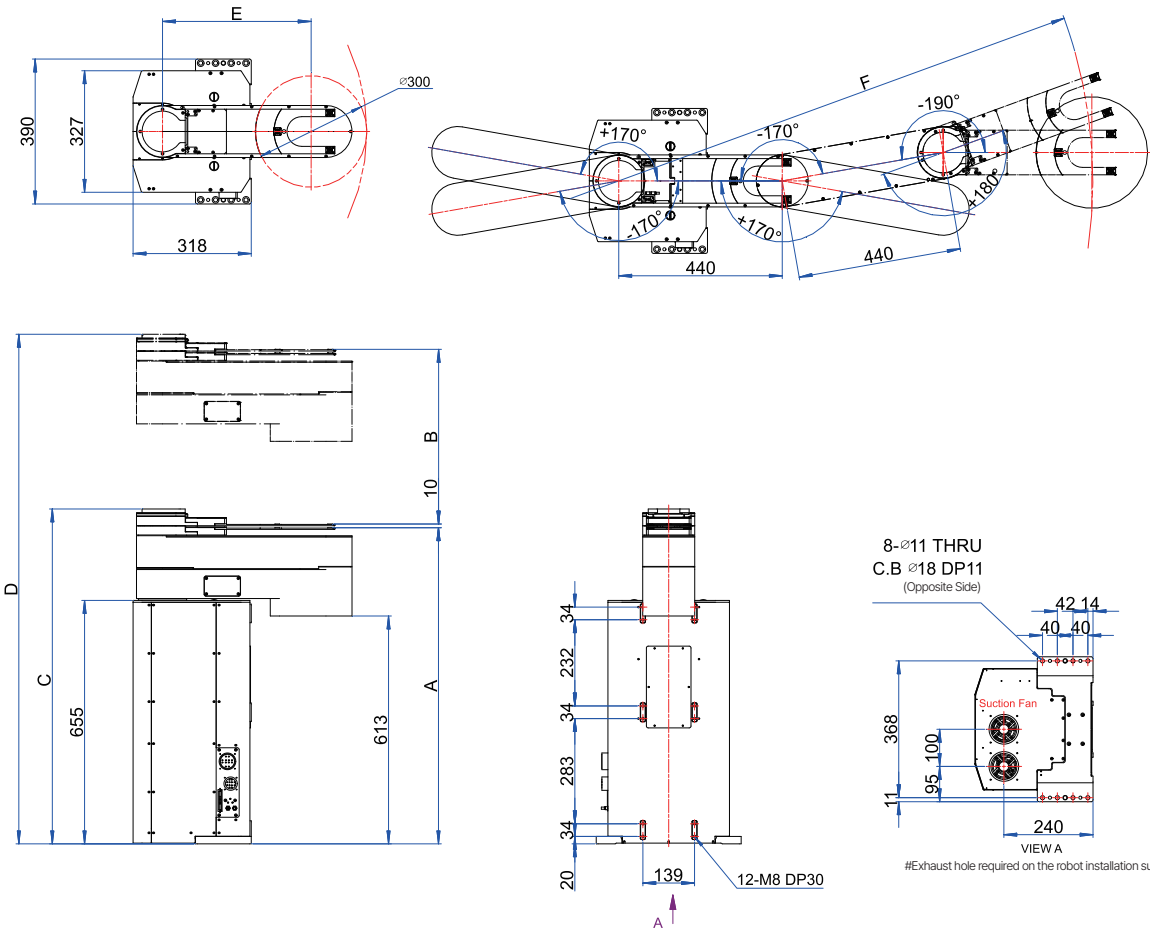
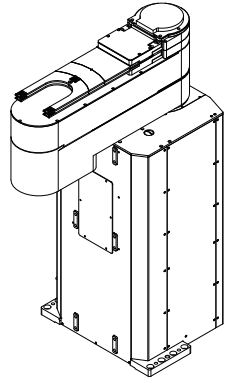
* Work Range may vary depending on customer's Hand specifications

Model



Robot Layout

SPECIFICATION		MODEL	
		U-WTR	
		AS3010	AS3011
Passline	A	849	850.5
Z Stroke	B	470	470
Z Position	C	901	901
Z UP Position	D	1371	1371
Joint to Hand Center	E	400	400
Reach	F	R1276	R1276



C-WTR Compact Wafer Transfer Robot

Summary

Compact-WTR is a robot employing AC servo motors. The Single Arm has 3 degrees of freedom, while the Dual Arm has 4 degrees of freedom - the robot's end always moves in a straight line motion in the working direction. Ultimately, this robot is used for transporting and loading wafers within a workspace centered around its installation location.

The Hand supports Vacuum and Edge Grip types.

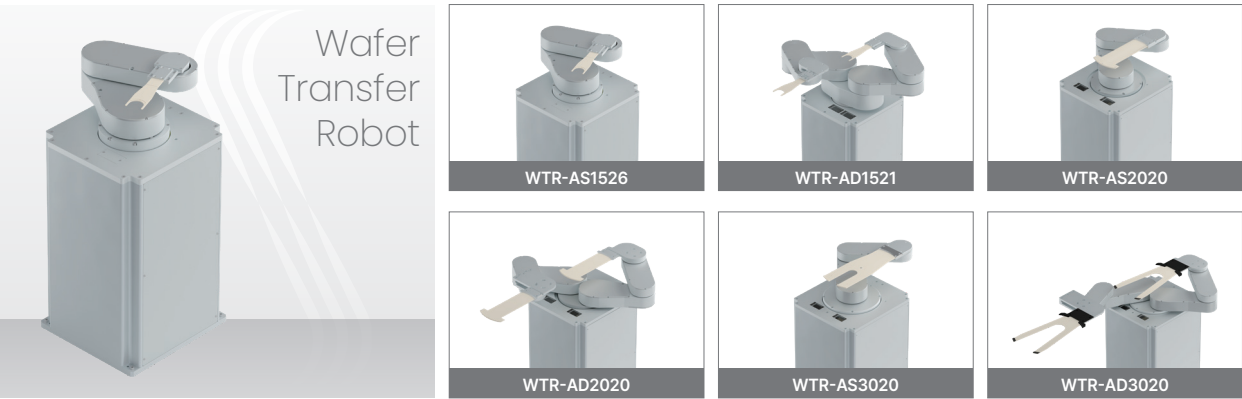
Robot Specifications

SPECIFICATION		MODEL					
		C-WTR					
		WTR-AS1526	WTR-AD1521	WTR-AS2020	WTR-AD2020	WTR-AS3020	WTR-AD3020
Structure		Cylindrical Type					
Arm Type		Single	Dual	Single	Dual	Single	Dual
Degree of Freedom		3 Axis	4 Axis	3 Axis	4 Axis	3 Axis	4 Axis
Applicable Wafer Size		150mm	150mm	200mm	200mm	300mm	300mm
Payload		0.2Kg	0.2Kg	0.2Kg	0.2Kg	0.2Kg	0.2Kg
Position Repeatability		±0.1mm	±0.1mm	±0.1mm	±0.1mm	±0.1mm	±0.1mm
Hand Type		Vacuum Mapping	Vacuum	Edge Grip	Edge Grip	Edge Grip	Edge Grip
Work Range	R1 Axis	440mm	440mm	500mm	500mm	615mm	660mm
	Theta Axis	300°	300°	300°	300°	300°	300°
	Z Axis	180mm	180mm	250mm	250mm	300mm	300mm
Velocity	R1 Axis	1000 mm/s	1000 mm/s	1000 mm/s	1000 mm/s	1000 mm/s	1000 mm/s
	Theta Axis	180 deg/s	180 deg/s	180 deg/s	180 deg/s	180 deg/s	180 deg/s
	Z Axis	500 mm/s	500 mm/s	500 mm/s	500 mm/s	500 mm/s	500 mm/s
Environment	Applicable Humidity/Temp.	Less than 80%RH / 0~40°C					
	Air(CDA)	-80 ~ -70kPa					
	Robot Mass	35Kg	38Kg	40Kg	45Kg	50Kg	55Kg

* The Hand is compatible with Edge Grip, Vacuum, and Mapping

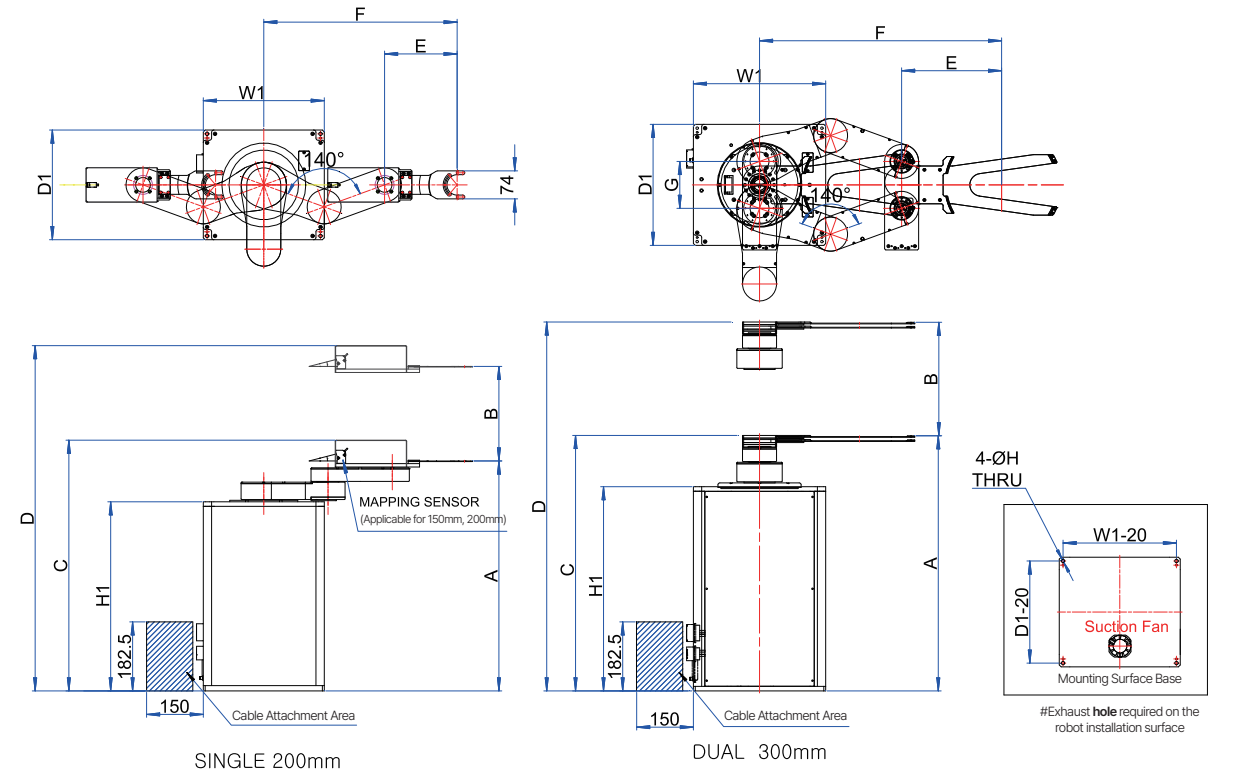
* Work Range may vary depending on customer's Hand specifications

Model



Robot Layout

SPECIFICATION		MODEL					
		C-WTR					
		Single			Dual		
		AS1526	AS2026	AS3020	AD1521	AD2020	AD3020
Passline	A	572	608	656	623	673	674.7
Z Stroke	B	180	250	300	180	250	300
Z Position	C	627	663	658	685.5	676	675.5
Z UP Position	D	807	913	958	866.5	926	975.5
Joint to Hand Center	E	198.1	192	220	198	181	264.5
Reach	F	R480	R511.5	R596	R480	R500.5	R640
Arm Distance	G				124	124	124
Fixed hole	H	6.5	9	9	6.5	9	9
Body Size	W1	280	320	350	280	320	350
	D1	260	290	320	260	290	320
	H1	450	500	540	450	500	540



FTR FOUN Transfer Robot

Summary

FTR is a Single Hand 3-axis robot employing AC servo motors.

The forward and backward movement is structurally designed to move radially from the center of robot rotation.

Ultimately, this robot transports a 300mm FOUN (Front Opening Unified Pod) and is adaptable to various installation conditions.

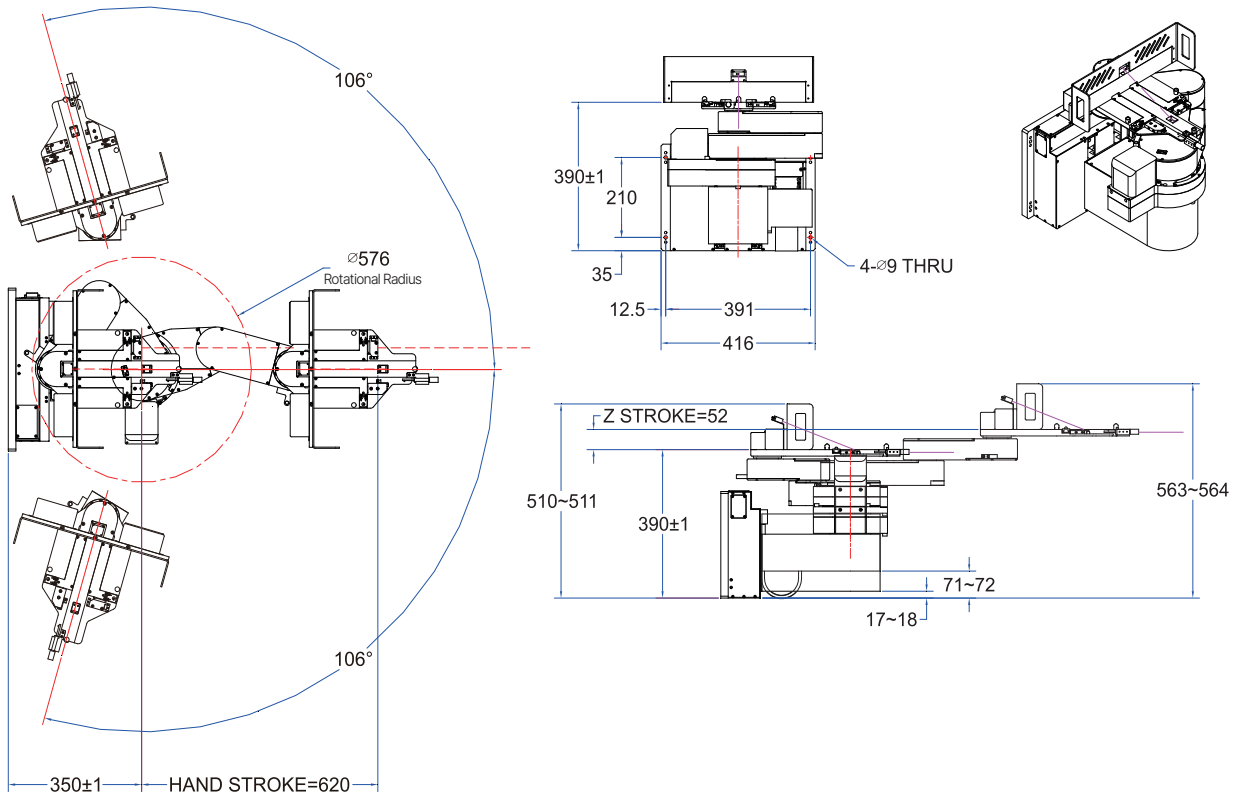
Robot Specifications

SPECIFICATION	MODEL	
	FTR	
	FTR-AS	
Structure	Cylindrical Type	
Arm Type	Single	
Degree of Freedom	3 Axis	
Position Repeatability	±0.1mm	
Work Range	Z Axis	50mm
	T Axis	212°
	R Axis	620mm
Velocity	Z Axis	250 mm/s
	T Axis	176 deg/s
	R Axis	1261 mm/s
Environment	Applicable Humidity/Temp.	Less than 80% RH
	Air(CDA)	0~40°C
	Robot Mass	50kg

Model



Robot Layout



Aligner

Summary

As a Pre-Aligner employing AC servo motors, the robot detects and aligns the Notch position after rotating the wafer around the center of the Wafer Rotational Axis (Rotator).

- Grip Aligner: Mechanical centering structure
- Non-Grip Aligner: Structure applying X-Y position correction algorithm

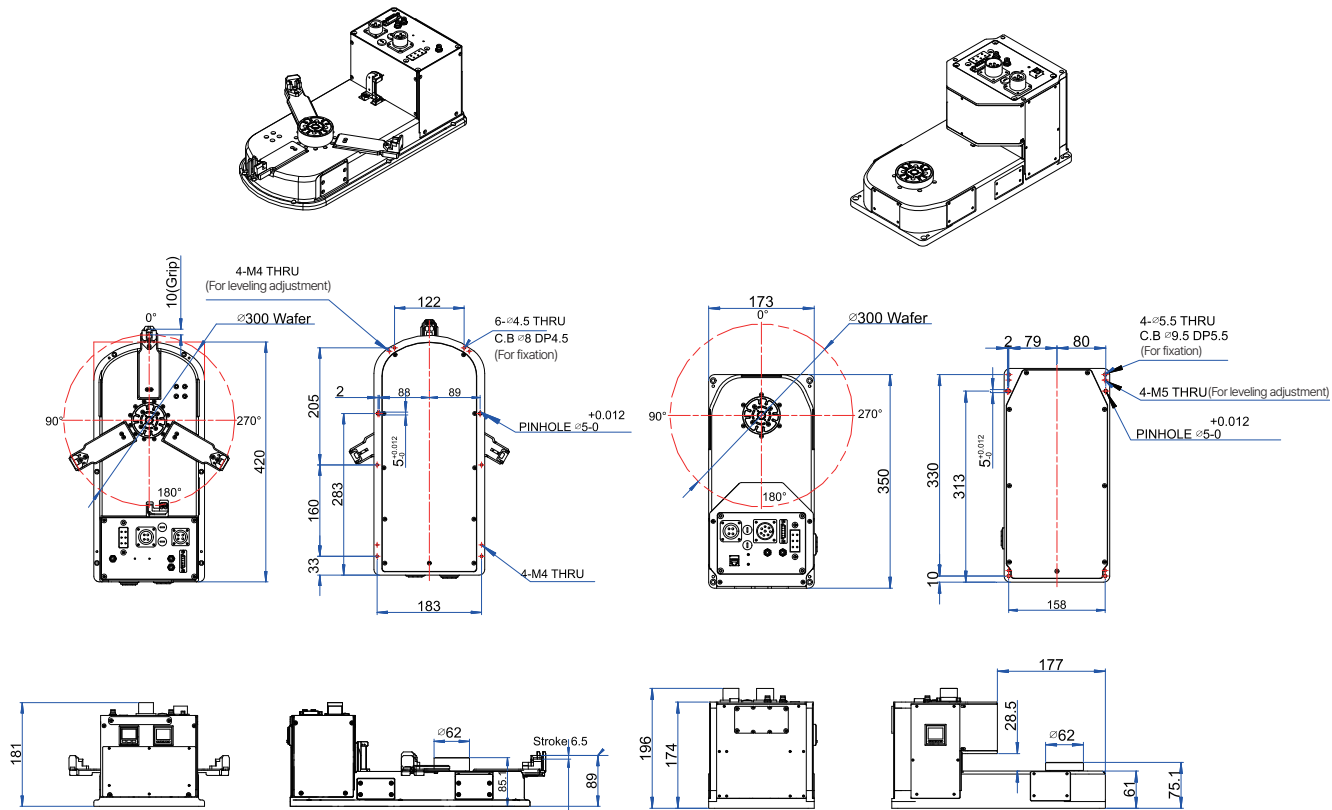
Robot Specifications

SPECIFICATION	MODEL	
	Aligner	
	Grip Aligner	Non Grip Aligner
Structure	Rotor& Gripper & Up/Down	Rotor
Applicable Wafer Size	300mm	
FidualRecognition	Notch	
Drive Motor	AC Servo Motor	
Detection of Position	17 Bit Abs. Encoder	Incremental Encoder
Sensor for Notch Detection	LED Light Fiber Sensor	Laser CCD Line Sensor
Wafer Detection	Vacuum Pressure Sensor	Laser CCD Line Sensor Vacuum Pressure Sensor
Wafer Holding Method	Vacuum Absorption	
Alignment Repeatability	±0.1°	±0.1°
Tact Time	Less than 4.5 sec	-
Max Align Offset Distance	3mm	±10mm
Cleanliness	Class 1	
Vacuum Requirement	-45 ~ -40kPa,30LPM	
CDA Requirement	0.2MPa, 30LPM	-
Applicable Humidity / Temp.	Less than 55% RH / 20° ~ 30°	Less than 55% RH / 20° ~ 30°
Weight	Appx. 9kg	

Model



Robot Layout



Industrial Transfer Robot

Atmosphere

- ITR-A4S, A6S, A8S (Single Post)
- ITR-A4T

Vacuum

- ITR-VS

Option : Travel Axis

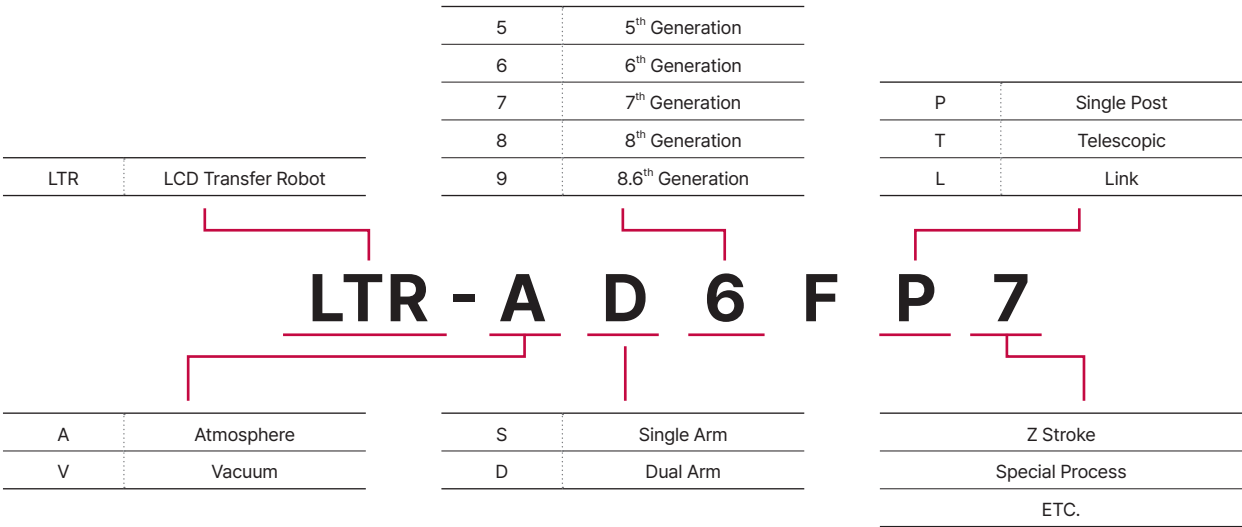


Industrial Transfer Robot Line-up

Robot

ITEM	MODEL	CONTROLLER	SIZE
ITR-A4S (Single Post)	LTR-AD4FP1_5C	SRC-5C	515×510
ITR-A6S (Single Post)	LTR-AD6CP2_5L	SRC-5L	925×1500
	LTR-AD6CP1_5L		
	LTR-AD6FP8_5L		
	LTR-AD6FP7_5L		1500×1850
	LTR-AD6FPB_5L		
	LTR-AD6FP7-OCF		
ITR-A8S (Single Post)	LTR-AD8FP0_5L		2200X2500 2290X2620
	LTR-AD8FP2_5L		
ITR-A4T	LTR-AD4FT1_5C	SRC-5C	515×510
ITR-VS	LTR-VD5FP0_5L	SRC-5L	717×174

Model Code



ITR-A4S Industrial Transfer Robot

Summary

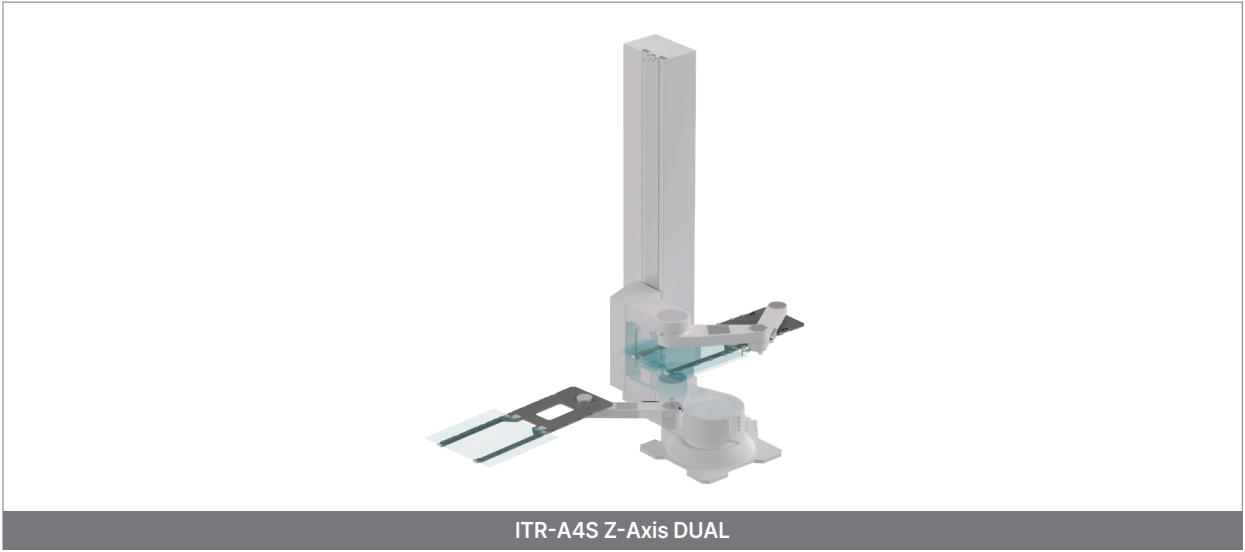
A robot employing AC servo motors with a Cylindrical & Single Post type. The Single Arm has 3 degrees of freedom, while the Dual Arm has 4 degrees of freedom - the robot's end always moves in a straight line motion in the working direction.

This robot is used for transporting and loading 2nd to 4th generation panels.

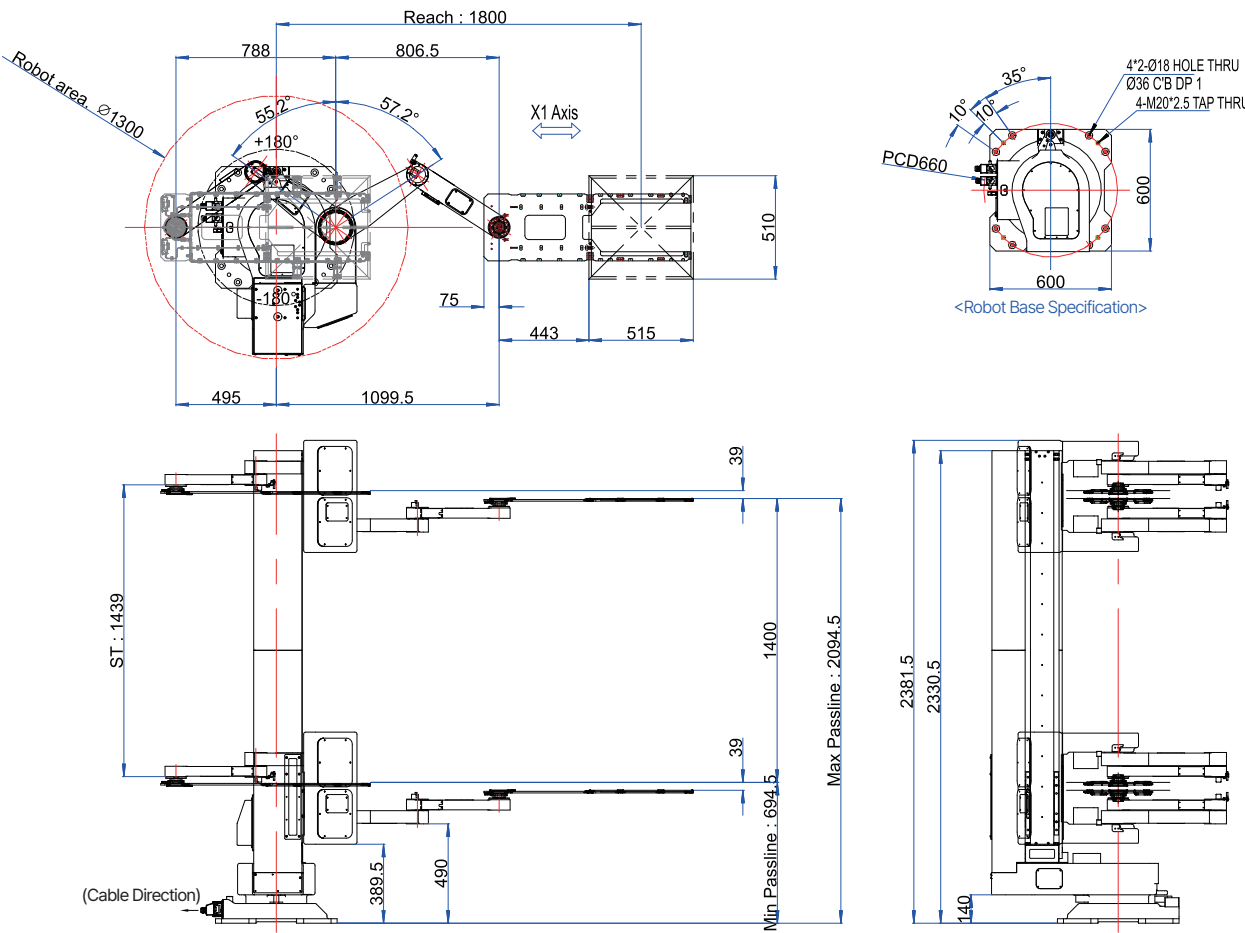
Robot Specifications

SPECIFICATION	MODEL	
	ITR-A4S(4G)	
	LTR-AD4FP1_5C	
Structure	Single Post	
Arm Type	DUAL	
Degree of Freedom	5 Axis	
Applicable Glass Size	510mm X 515mm	
Payload	8kg / Arm	
Position Repeatability	±0.3mm	
Hand Type	Vacuum	
Work Range	Z Axis	1439mm
	Theta Axis	360°(-180° ~ +180°)
	Arm Axis	+806.5mm ~ -788mm
Velocity	Z Axis	620 mm/s
	Theta Axis	120 deg/s
	Arm Axis	1850 mm/s
Cleanliness	Class 10	
Environment	Applicable Humidity/Temp.	Less than 80% RH / 0~40℃
	Vacuum Pressure	-80 ~ -70Kpa
	Robot Mass	350kg (Body Only)

Model



Robot Layout



ITR-A6S Industrial Transfer Robot

Summary

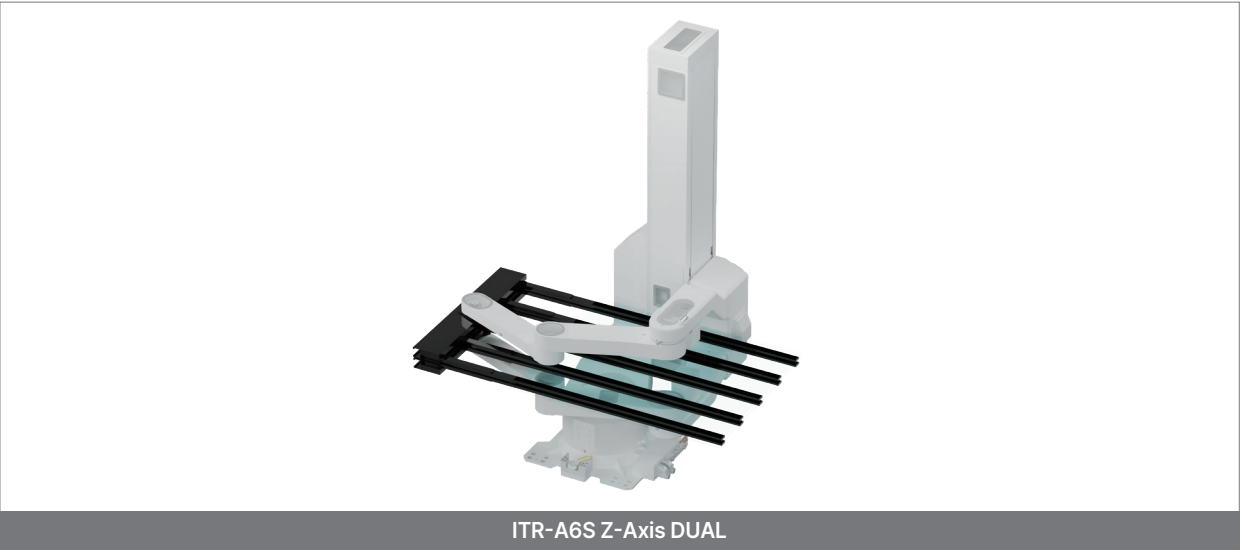
A robot employing AC servo motors with a Cylindrical & Single Post type. The Single Arm has 3 degrees of freedom, while the Dual Arm has 4 degrees of freedom - the robot's end always moves in a straight line motion in the working direction.

This robot is used for transporting and loading panels of the 6th generation.
(Z Axis Stroke : 1,900mm)

Robot Specifications

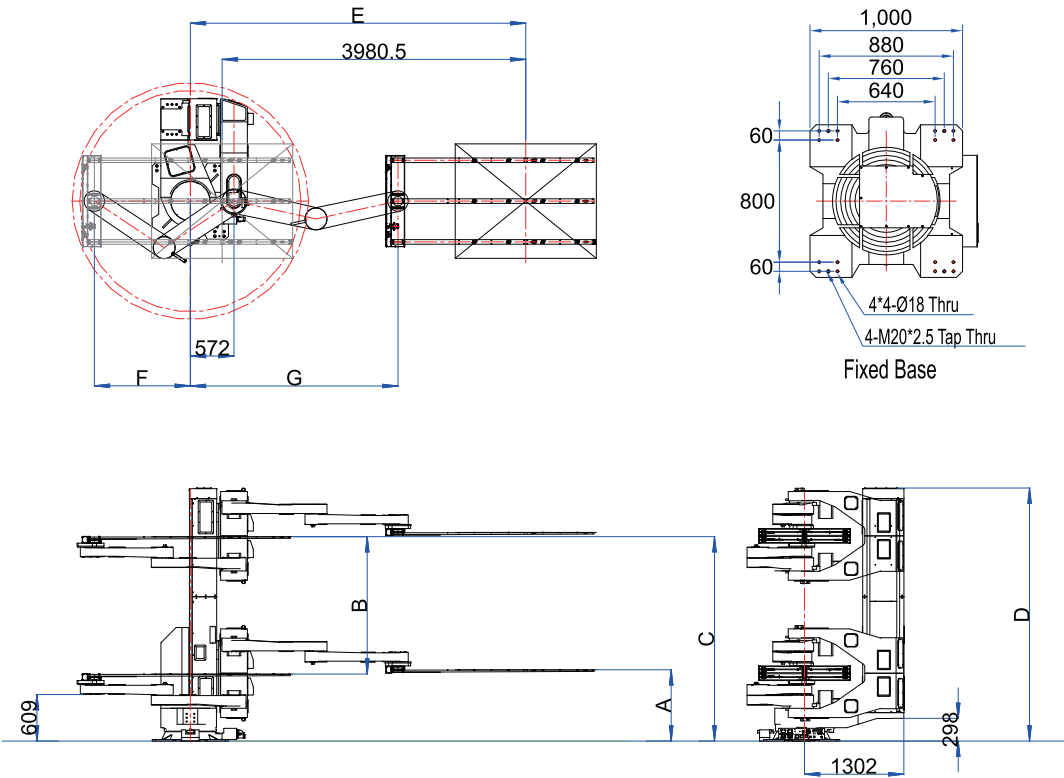
SPECIFICATION		MODEL		
		ITR-A6S(6G)		
		LTR-AD6CP2_5L	LTR-AD6FP8_5L	LTR-AD6FPB_5L
Structure		Single Post	Single Post	Single Post
Arm Type		DUAL	DUAL	DUAL
Degree of Freedom		5 Axis	5 Axis	5 Axis
Applicable Glass Size		925mm x 1500mm	1850mm x 1500mm	1850mm x 1500mm
Payload		40kg / Arm	40kg / Arm	80kg / Arm
Position Repeatability		±0.3mm	±0.3mm	±0.3mm
Hand Type		Vacuum	Vacuum	Vacuum
Work Range	Z Axis	0~1900mm	0~1900mm	0~1800mm
	Theta Axis	-180° ~ +180°	-180° ~ +180°	-180° ~ +180°
	Arm Axis	+1843mm ~ -1785mm	+1843mm ~ -1785mm	+2150mm ~ -2000mm
Velocity	Z Axis	800 mm/s	800 mm/s	900 mm/s
	Theta Axis	100 deg/s	100 deg/s	100 deg/s
	Arm Axis	4200 mm/s	4200 mm/s	4200 mm/s
Cleanliness		Class 10		
Environment	Applicable Humidity/Temp.	Less than 80% RH / 0~40°C	Less than 80% RH / 0~40°C	Less than 80% RH / 0~40°C
	Air(CDA)	-80 ~ -70Kpa	-80 ~ -70Kpa	-80 ~ -70Kpa
	Robot Mass	1600kg (Body Only)	1600kg (Body Only)	1700kg (Body Only)

Model



Robot Layout

SPECIFICATION		MODEL		
		ITR-A6S		
MIN passline	A	LTR-AD6CP2_5L	LTR-AD6FP8_5L	LTR-AD6FPB_5L
		890	890	934
Z Stroke	B	1900	1900	1800
		2715	2728	2678
MAX passline	C	3387	3387	3316.2
		3915	4090	4397
Z Position	D	1550	1785	1830.5
		1843	1843	2150
Raech	E			
Ready Position	F			
Stretch Position	G			



ITR-A6S Industrial Transfer Robot

Summary

A robot employing AC servo motors with a Cylindrical & Single Post type. The Single Arm has 3 degrees of freedom, while the Dual Arm has 4 degrees of freedom - the robot's end always moves in a straight line motion in the working direction.

This robot is used for transporting and loading panels of the 6th generation.
(Z Axis Stroke : 3,800mm)

Robot Specifications

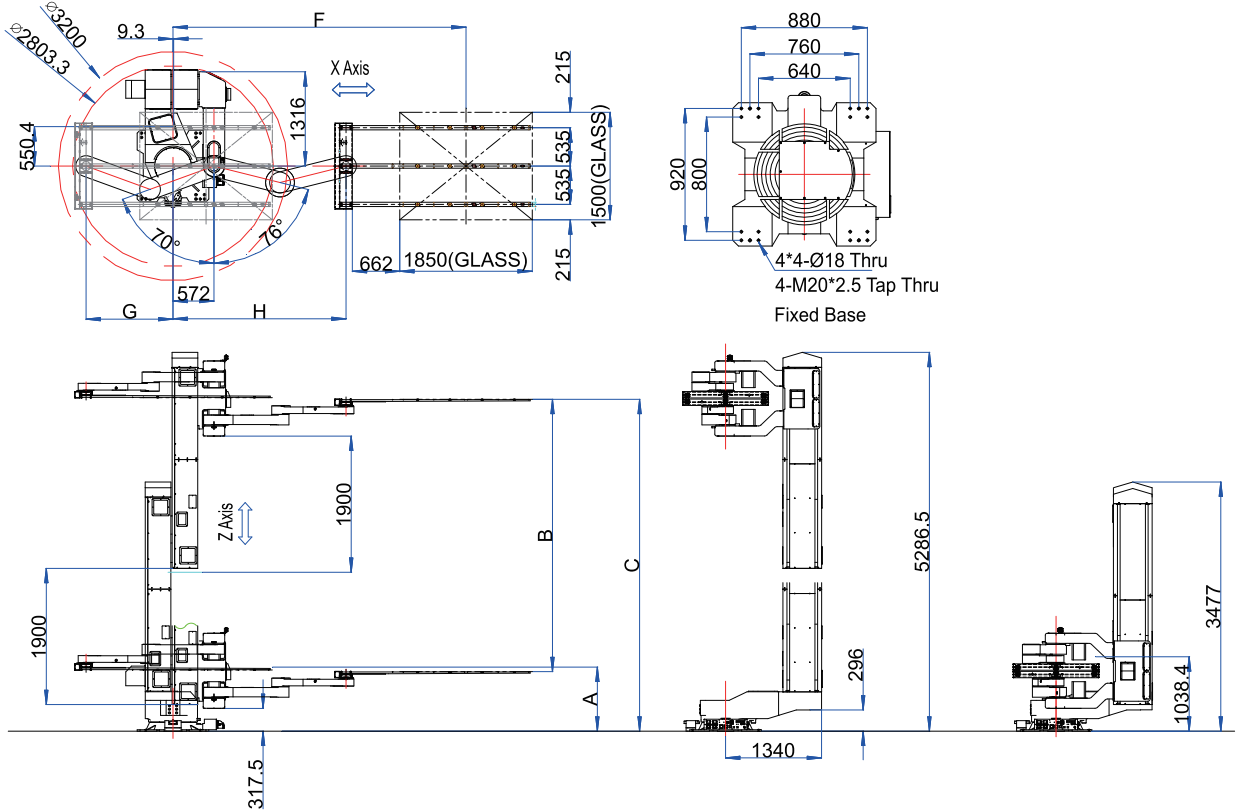
SPECIFICATION		MODEL		
		ITR-A6S(6G)		
		LTR-AD6CP1_5L	LTR-AD6FP7_5L	LTR-AD6FP7T_5L
Structure		Single Post	Single Post	Single Post
Arm Type		DUAL	DUAL	DUAL
Degree of Freedom		5 Axis	5 Axis	5 Axis
Applicable Glass Size		925mm x 1500mm	1850mm x 1500mm	925mm x 1500mm
Payload		40kg / Arm	40kg / Arm	40kg / Arm
Position Repeatability		±0.3mm	±0.3mm	±0.3mm
Hand Type		Vacuum	Vacuum	Vacuum
Work Range	Z Axis	0~3800mm	0~3800mm	0~3800mm
	Theta Axis	-180° ~ +180°	-180° ~ +180°	-180° ~ +180°
	Arm Axis	+1843mm ~ -1785mm	+1843mm ~ -1785mm	+1843mm ~ -1785mm
	X Axis (Travel Axis)			1806mm
Velocity	Z Axis	1150(575+575) mm/s	1150(575+575) mm/s	1150(575+575) mm/s
	Theta Axis	100 deg/s	100 deg/s	100 deg/s
	Arm Axis	4200 mm/s	4200 mm/s	4200 mm/s
	X Axis (Travel Axis)			1150 mm/s
Cleanliness		Class 10		
Environment	Applicable Humidity/Temp.	Less than 80% RH / 0~40℃	Less than 80% RH / 0~40℃	Less than 80% RH / 0~40℃
	Air(CDA)	-80 ~ -70Kpa	-80 ~ -70Kpa	-80 ~ -70Kpa
	Robot Mass	1900kg (Body Only)	1900kg (Body Only)	3700kg (Body Only)

Model



Robot Layout

SPECIFICATION		MODEL		
		ITR-A6S		
		LTR-AD6CP1_5L	LTR-AD6FP7_5L	LTR-AD6FP7T_5L
MIN passline	A	890	894	1333
Z Stroke	B	3800	3800	3800
MAX passline	C	4615	4631	5071
Z Position	D	3477	3477	3917
Z Up Position	E	5287	5287	5727
Reach	F	3807	4090	4100
Ready Position	G	978	1213.4	1248.5
Stretch Position	H	2307	2415.6	2406.5



ITR-A8S Industrial Transfer Robot

Summary

A robot employing AC servo motors with a Cylindrical & Single Post type. The Single Arm has 3 degrees of freedom, while the Dual Arm has 4 degrees of freedom - the robot's end always moves in a straight line motion in the working direction.

This robot is used for transporting and loading panels of the 8th generation

Robot Specifications

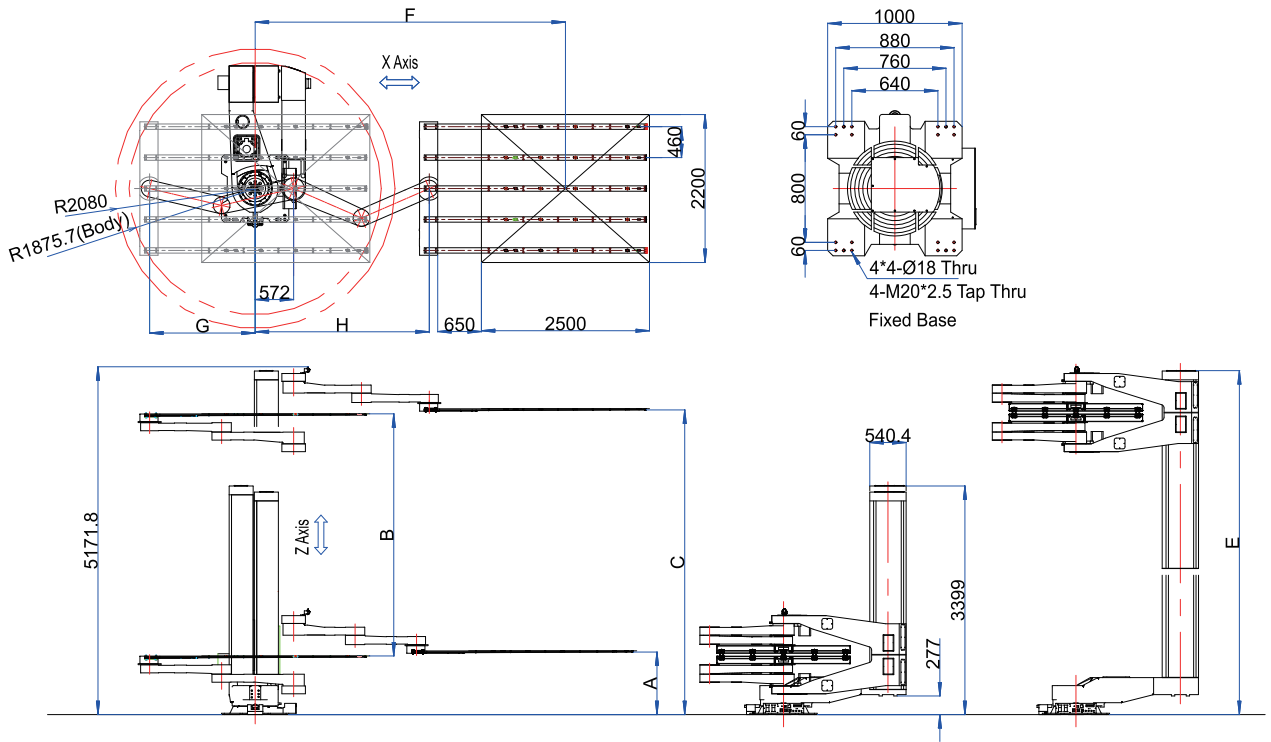
SPECIFICATION		MODEL	
		ITR-A8S(8G)	
		LTR-AD8FP0_5L	LTR-AD8FP2_5L
Structure		Single Post	Single Post
Arm Type		DUAL	DUAL
Degree of Freedom		5 Axis	5 Axis
Applicable Glass Size		2200mm x 2500mm	2200mm x 2500mm
Payload		80kg / Arm	80kg / Arm
Position Repeatability		±0.3mm	±0.3mm
Hand Type		Vacuum	Vacuum
Work Range	Z Axis	0~3600mm	0~1450mm
	Theta Axis	-180° ~ +180°	-180° ~ +180°
	Arm Axis	+2150mm ~ -2150mm	+2150mm ~ -2150mm
Velocity	Z Axis	1100(550+550) mm/s	1000 mm/s
	Theta Axis	90 deg/s	90 deg/s
	Arm Axis	4500 mm/s	4500 mm/s
Cleanliness		Class 10	
Environment	Applicable Humidity/Temp.	Less than 80% RH / 0~40°C	Less than 80% RH / 0~40°C
	Air(CDA)	-80 ~ -70Kpa	-80 ~ -70Kpa
	Robot Mass	1900kg (Body Only)	1800kg (Body Only)

Model



Robot Layout

SPECIFICATION		MODEL	
		ITR-A8S	
		LTR-AD8FP0_5L	LTR-AD8FP2_5L
MIN passline	A	949.5	948
Z Stroke	B	1450	3600
MAX passline	C	2324.5	4472
Z Position	D	2968.2	3399
Z Up Position	E	2968.2	5108.5
Reach	F	4697	4615
Ready Position	G	1570	1570
Stretch Position	H	2590	2590



ITR-A4T Industrial Transfer Robot

Summary

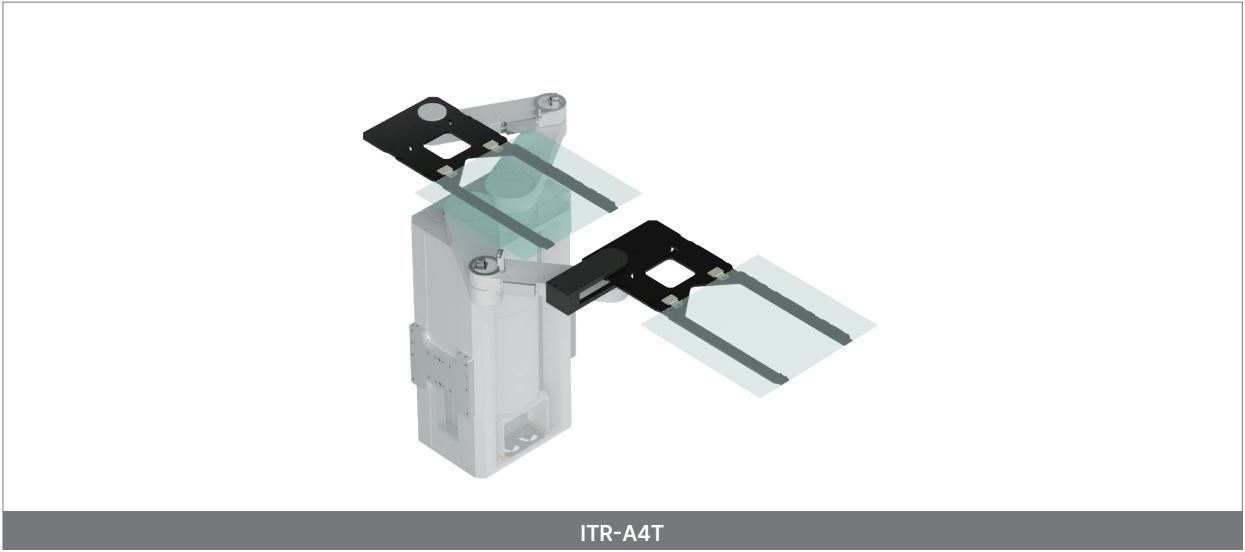
A robot employing AC servo motors with a Cylindrical & Single Post type. The Single Arm has 3 degrees of freedom, while the Dual Arm has 4 degrees of freedom - the robot's end always moves in a straight line motion in the working direction.

This robot is used for transporting and loading 2nd to 4th generation panels.
It has the same structure as C-WTR and allows for a high payload capacity.

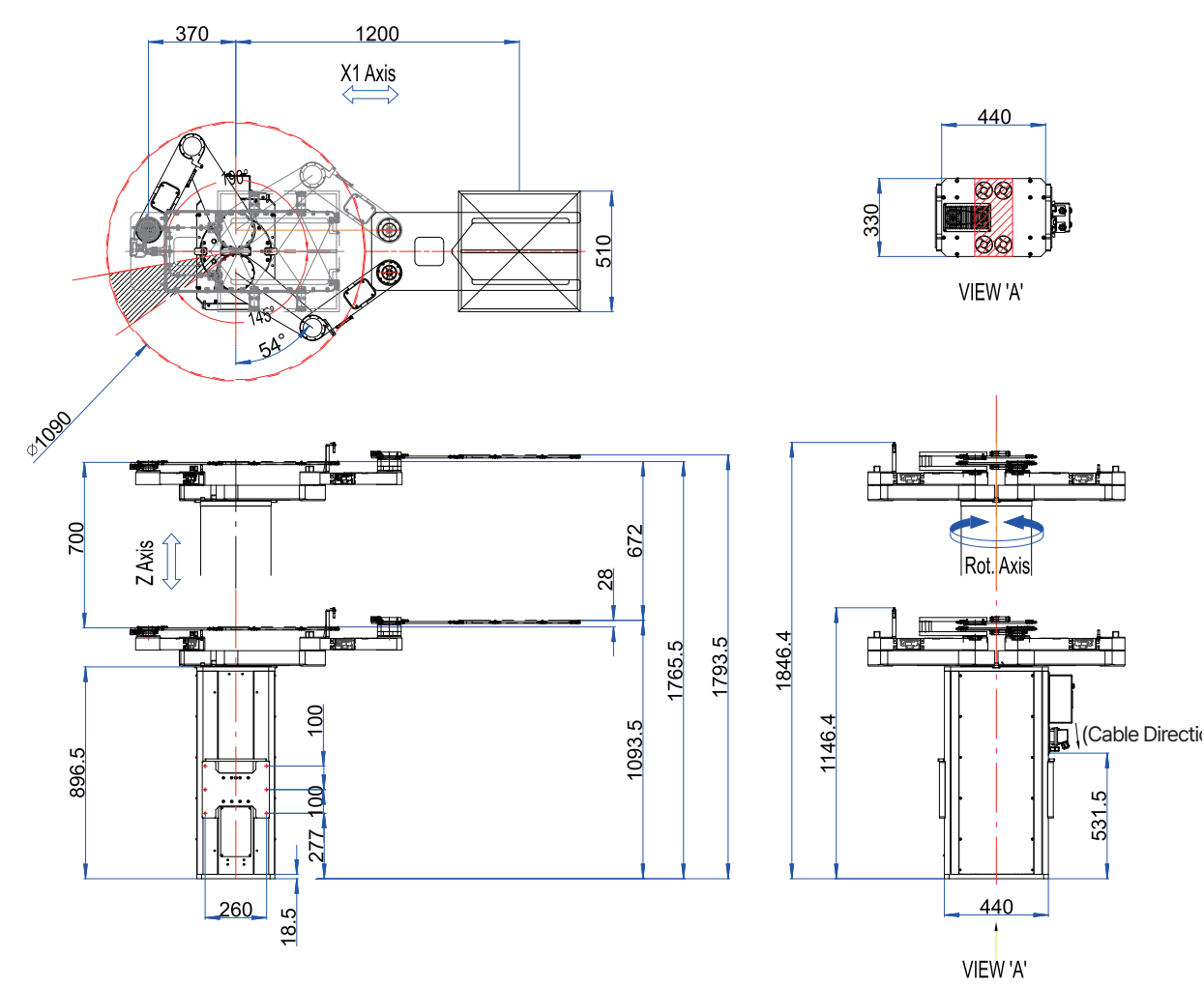
Robot Specifications

SPECIFICATION		MODEL
		ITR-A4T
		LTR-AD4FT1_5C
Structure	Cylindrical Type	
Arm Type	DUAL	
Degree of Freedom	5 Axis	
Applicable Glass Size	510mm x 515mm	
Payload	8kg / Arm	
Position Repeatability	±0.3mm	
Hand Type	Vacuum	
Work Range	Z Axis	0~650mm(700mm)
	Theta Axis	-190° ~ +145°
	Arm Axis	+800mm ~ -473mm
Velocity	Z Axis	600 mm/s
	Theta Axis	240 deg/s
	Arm Axis	1850 mm/s
Cleanliness	Class 10	
Environment	Applicable Humidity/Temp.	Less than 80% RH / 0~40°C
	Air(CDA)	-80 ~ -70Kpa
	Robot Mass	150kg (Body Only)

Model



Robot Layout



ITR-VS Industrial Transfer Robot (Vacuum)

Summary

A vacuum robot employing AC servo motors with a Cylindrical type. The Single Arm has 3 degrees of freedom, while the Dual Arm has 4 degrees of freedom - the robot's end always moves in a straight line motion in the working direction.

ITR-VS ROBOT is a vacuum robot designed to operate in a vacuum environment, and it has completed operational tests in an environment with 4×10⁻⁸ torr. An atmospheric robot of the same specifications is also available.

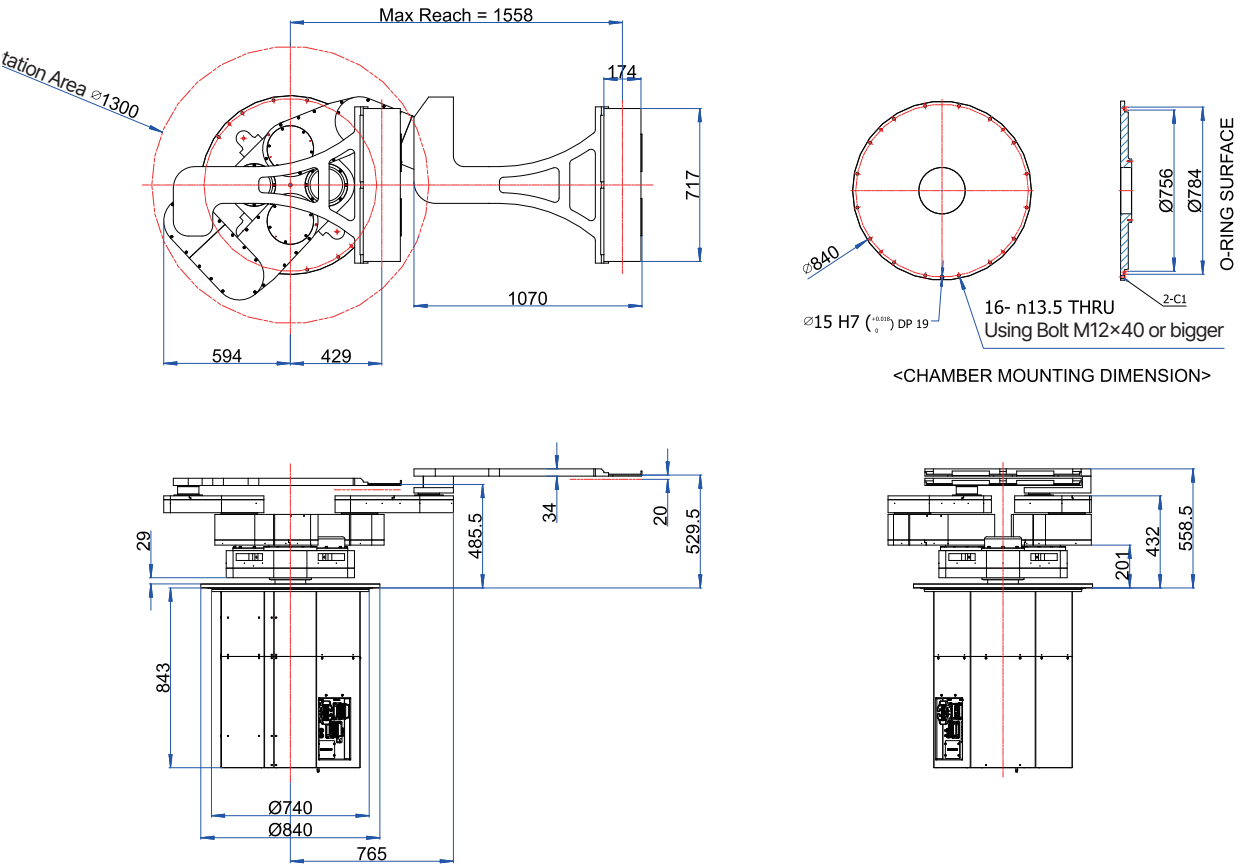
Robot Specifications

SPECIFICATION		MODEL
		ITR-VS
		LTR-VD5FP0_5L
Structure	Cylindrical Type	
Arm Type	DUAL	
Degree of Freedom	4 Axis	
Applicable Glass Size	715mm x 174mm	
Payload	20kg / Arm	
Position Repeatability	±0.2mm	
Hand Type	Vacuum	
Work Range	Z Axis	0~190mm
	Theta Axis	-180° ~ +180°
	Arm Axis	+650mm ~ -479mm
Velocity	Z Axis	300 mm/s
	Theta Axis	150 deg/s
	Arm Axis	1850 mm/s
Cleanliness	Class 10	
Environment	Applicable Humidity/Temp.	Less than 80% RH / 0~40°C
	Air(CDA)	4×10 ⁻⁸ torr
	Robot Mass	630kg (Body Only)

Model



Robot Layout



Controller

SRC-5C
SRC-5L

SRC-5C Controller

Summary

- Robot Dedicated Controller
- Real-time multi-control support
- Multi-robot control (e.g., WTR & Aligner control)
- AVS (Active Vibration Suppressor)
- Holds CE, KCS, UL certifications
- Size: 410 × 400 x h129mm
- Robot connection cable is standard or customized option
- External cable pin mapping and connector specifications provided
(Refer to the manual)



Specifications

Power Specifications	Main Power	AC 220V, 50Hz/60Hz,1Ø or 3Ø, 4kVA
	Controller Power	-
Layout	Size/Weight	400 × 127 × 400 / 10kg
Maximum Number of Axes		Max. 7 AXIS
Operation		PTP, Linear and circular interpolation, Arch
I/O	User I/O	User In 24bit (High Speed Input:16bit/Limit Sensor:8bit) User Out 16bit
	OptionUser I/O	Max User In 64bit, User Out 64bit
Servo Driver		1,7Axis : 1kW / 2 ~ 6Axis : 400W
Smart Diagnosis	Temperature	CPU, IPM1, IPM2, Shunt Resistor
	Voltage	AC Input Voltage, DC-Link Voltage, 12V, 5V, 3.3V
Communication	Ethernet	1Gbps 1Port, 100Mbps 2Port (Option)
	Serial	RS-485/422 1Port (Option), RS-232 1Port (Option)
Protection Functions		Over Current, Over Load, High Voltage, Low Voltage, IPM Over Heat, IPM Fault, FAN Fault, Over Speed, CPU Watch-Dog Error
Drive Mode		Step Run, Cycle Run, Auto Run, Manual
Safety Rating		PLd/CAT3 (EN 13849-1), CE/S-Mark, UL(NTRL)

SRC-5L Controller

Summary

- High-Capacity Robot Dedicated Controller
 - Real-time multi-control support
 - Multi-robot control
 - AVS (Active Vibration Suppressor)
 - Maintenance (self-diagnosis)
 - Holds CE, KCS certifications
 - Size: 720 × 500 x h685mm
 - Robot connection cable is standard or customized option
 - External cable pin mapping and connector specifications provided
- (Refer to the manual)



Specifications

Power Specifications	Main Power	AC 200 ~ 220V, 50Hz/60Hz, 3Ø, 68A(Max), 22kVA
	Controller Power	AC 200 ~ 220V, 50Hz/60Hz, 1Ø, 500VA
Layout	Size/Weight	720 × 680 × 500 / 130kg
Maximum Number of Axes		Max. 8 AXIS
Operation		PTP, Linear and circular interpolation, Arch
I/O	User I/O	User In 32bit(High Speed Input : 8bit) User Out 32bit
	Option User I/O	Max User In 64bit, User Out 64bit
	Limit Sensor	8bit
Servo Driver		Controller/AMP Integral Servo Drive, Upto 4 Axis Controller per Module Motor Capacity: 100W ~ 7.5kW Motor
Smart Diagnosis	Temperature	IPM, Rectifier, Noise Filter, CPU Module, Shunt Resistor
	Voltage	DC-Link Voltage, Control Voltage Monitor & Alarm
Communication	Ethernet	100Mbps 1Port
	Serial	RS-232 1Port
Protection Functions		Over Current, Over Load, High Voltage, Low Voltage, IPM Over Heat, IPM Fault, FAN Fault, Over Speed, CPU Watch-Dog Error
Drive Mode		Step Run, Cycle Run, Auto Run, Manual
Safety Rating		PLd/CAT3 (EN 13849-1), CE/S-Mark



Samick THK Pyeongtaek Plant

Creative Value Creator
on Space & Motion

Heritage & New Era

CONTACT

Headquarter

163 Seongseodong-ro, Dalseo-gu, Daegu Metropolitan City
T. 053-665-7000

Pyeongtaek Plant

Robot System Development
and Manufacturing Experience
and Education Center

87-11 Jinwi2sandan-ro, Jinwi-myeon, Pyeongtaek, Gyeonggi-do
T. 031-650-3500
F. 031-376-7530

Homepage

<http://www.samick-mechatro.co.kr>

E-mail

samick_robot@samickthk.co.kr



*Product specifications may be
subject to change for improvement

CAT. No. 2023k.1