

SAB Series

특징

고속주행 및 STROKE

BELT 구동 방식으로 고속주행 및 긴 스트로크 대응 가능합니다.

다양한 LINE UP

100mm-3,600mm까지 50mm마다 스트로크를 설정하였습니다.
(SAB04 형번은 스트로크 1150mm로 제한됩니다.)

고강성

FEM(Finite Elements Method)을 통한 FRAME의 최적 설계로
고강성을 실현 하였습니다.

고정도

벨트와 서보모터 구동으로 정밀한 위치 제어가 가능하며 고강성 HSR TYPE LM
GUIDE를 적용하여 장시간 사용에도 높은 정밀도를 유지합니다.

고객사에서의 조립 용이화

슬롯 핀홀을 각각 표준화하여 가공해 설치시 조립기준이 되고, 고객사에서 용이하게
작업이 가능합니다.

저가격

부품수를 줄이고 공용화하여 원가를 절감하며, 소비자에게 최대한의 이익을
제공해 설계에서의 손실을 줄여드립니다.

SAB SERIES

형태별 종류



AL COVER 직렬



AL COVER 병렬

형번	감속비	스트 로크 [mm]	정격 속도 [mm/s]	정격 출력 [w]	가변하중 [kg]		STROKE 별 최고 속도 [mm/s]																
							STROKE [mm]																
					수평	벽면	150	200	250	300	350	400	450	500	600	700	800	900	1000	1100	1200		
SAB04	03	~1150	1400	100	4		1400																
	05		840		14		840																
SAB07	05	~3600	1250	400	20		1250																
	10		625		30		625																
SAB09	05	~3600	1600	750	30		1600																
	10		800		40		800																
SAB12	05	~3600	1250	400	40	40	1250																
	10		60		60	625																	
SAB16	05	~3600	1600	750	60	60	1600																
	10		80		80	800																	
SAB20	05	~3600	1600	750	80	80	1600																
	10		100		100	800																	

상세도



PC COVER 직렬



PC COVER 병렬

1300	1400	1500	1600	1700	1800	1900	2000	2100	2200	2300	2400	2500	2600	2700	2800	2900	3000	3100	3200	3300	3400	3500	3600
												1250											
												625											
												1600											
												800											
												1250											
												625											
												1600											
												800											
												1600											
												800											

형번 구성 : 단축

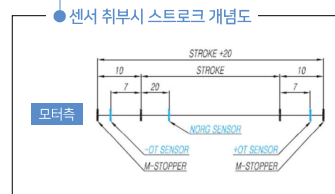
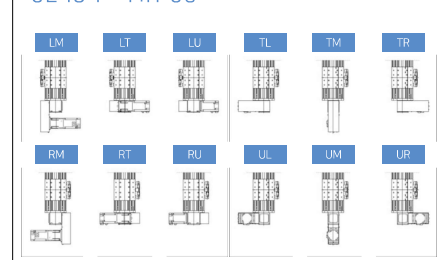
형번	감속비	스트로크	상면커버 종류 & 그리스 배관
SAB12RT	03	0150	AG
①	②	③	④
시리즈명 + MOTOR 연결 방식	감속비	STROKE	상면 커버 종류 & 그리스 배관
시리즈명	03 : 3 04 : 4 05 : 5 07 : 7 10 : 10	0100 : 100mm 0150 : 150mm ~ 3550 : 3550mm 3600 : 3600mm	BC : 인장 커버 BG : 인장 커버+그리스 배관 AL : AL압출커버 AG : AL압출커버+그리스 배관 PC : PC커버 PG : PC커버+그리스 배관 (SAB04 배관 제외) (SAB04/07/09 AL압출 & PC커버 제외)
구동부 연결 방식	감속기 연결 방식	형번별 최대스트로크	
D 직렬 L 좌병렬 R 우병렬 T 상병렬 U 하병렬	L 좌 R 우 T 상 M 뒤 U 하	SAB04 : 0100 - 1150 SAB07 : 0100 - 3600 SAB09 : 0100 - 3600 SAB12 : 0100 - 3600 SAB16 : 0100 - 3600 SAB20 : 0100 - 3600	

* 모터직렬사양 : 커풀링을 장착

* 모터병렬사양 : 타이밍폴리, 타이밍벨트 침부

* 백면부착타입 : DT,DU,TL,TM,TR,UL,UM,UR

병렬사용시 모터 취부 방향



* 상기 그림은 센서(OMRON,PANASONIC) 취부 시 스트로크 개념도입니다.
센서 종류에 따라 스트로크가 달라질 수 있으니 상세한 사항은 삼익 THK로 문의 바랍니다

센서 옵션	모터 옵션	레이더트 옵션
E22R	MA20BS	R1
④	⑤	⑥
센서 유/무(케이블 길이 옵션) + 센서 장착 위치	감속기 플렌지 타입 + 모터 용량 및 취부	레이더트 사양
제조사 옵션 기호 NORG(1EA) ±OT(2EA) 케이블 길이 옵션	감속기 플렌지 타입	레이더트
無 기호 N 없음	MA A 타입	無 기호 없음
E1 EE-SX674	MB B 타입	R1 LM RAIL ONLY
E2 EE-SX674 EE-SX674 + 2 2M	MC C 타입	R2 LM RAIL+LM BLOCK
E3 EE-SX674A	* 감속기 플렌지 타입은 감속기 옵션(표1)을 참조하여 주십시오 [Page.246]	R3 SCREW SHAFT ONLY
E4 EE-SX674A EE-SX674 4 4M	+	R4 SCREW SHAFT + NUT
E5 EE-SX671 5 5M	MOTOR 용량	R5 LM RAIL + SCREW SHAFT
E6 EE-SX671 EE-SX671 +	10 100W	LM RAIL + LM BLOCK + SCREW SHAFT + NUT
E7 EE-SX671A	20 200W	
E8 EE-SX671A EE-SX671 R 우측	40 400W	
P1 PM-Y65	75 750W	
P2 PM-Y65 PM-Y65 L 좌측	10B 100W BRAKE	
P3 PM-Y65-D	20B 200W BRAKE	
P4 PM-Y65-D PM-Y65	40B 400W BRAKE	
P5 PM-L65	75B 750W BRAKE	
P6 PM-L65 PM-L65	+	
P7 PM-L65-D	MOTOR 취부	
P8 PM-L65-D PM-L65	S 베이스외부	

* 제조사별 표준센서 케이블 길이 : 2m : OMRON, PANASONIC

형번별 적용 LM GUIDE

SAB04 : SRS12M
SAB07 : HSR15R
SAB09 : HSR20R
SAB12 : HSR15R
SAB16 : HSR20R
SAB20 : HSR25R

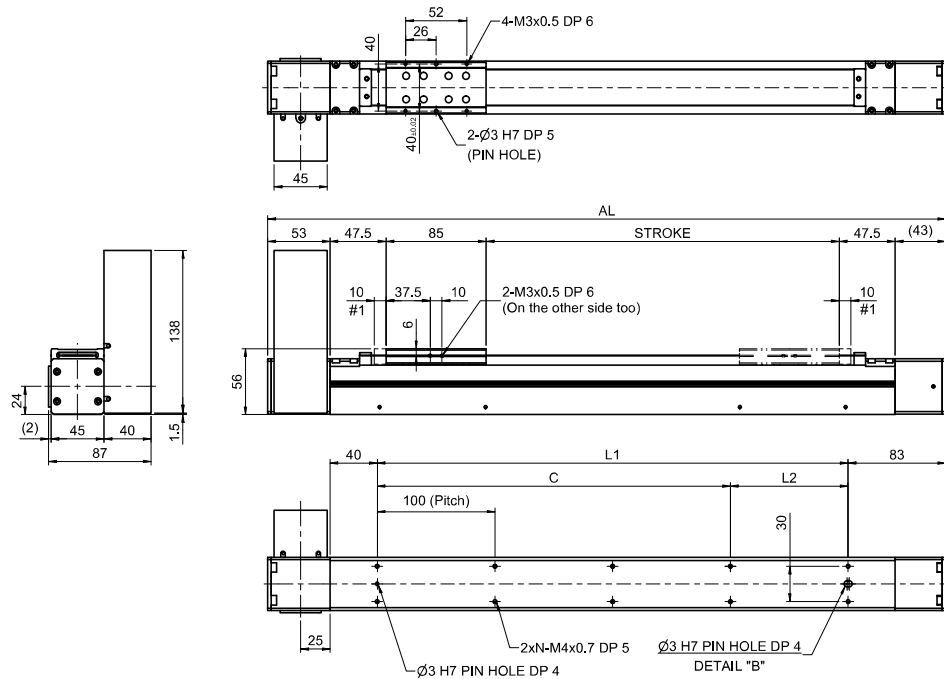
모델별 표준모터 용량

SAB04 : 100W
SAB07 : 400W
SAB09 : 750W
SAB12 : 400W
SAB16 : 750W
SAB20 : 750W

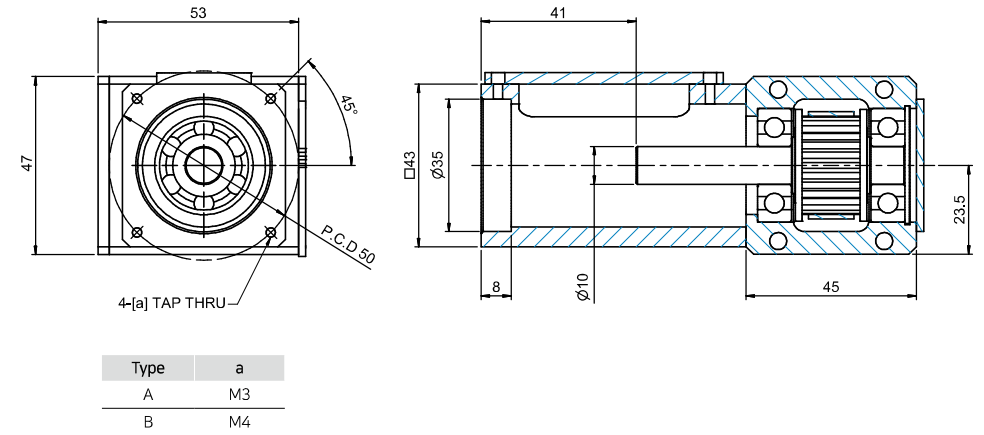
SAB04

일반형 인장커버 직렬형 (100W)

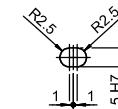
외형도



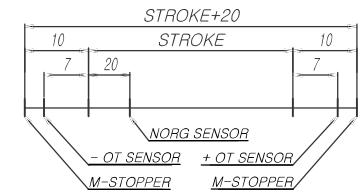
상세도



Reducer Mounting Dimension Table



DETAIL "B"
(BASE PIN HOLE)



* 스트로크 개념도 *
(표준센서: EE-SX674 사용시)

스트로크[mm] (최대스트로크)			0100 [0120]	0150 [0170]	0200 [0220]	0250 [0270]	0300 [0320]	0350 [0370]	0400 [0420]	0450 [0470]	0500 [0520]
최고속도 [mm/s]	감속비	03	1400								
		05	840								
치수 [mm]	AL		376	426	476	526	576	626	676	726	776
	L1		200	250	300	350	400	450	500	550	600
	C		200	200	300	300	400	400	500	500	600
	L2		0	50	0	50	0	50	0	50	0
취부홀 개수		N	3	4	4	5	5	6	6	7	7
본체 중량 [kgf]			1.7	1.9	2	2.1	2.3	2.4	2.6	2.7	2.8

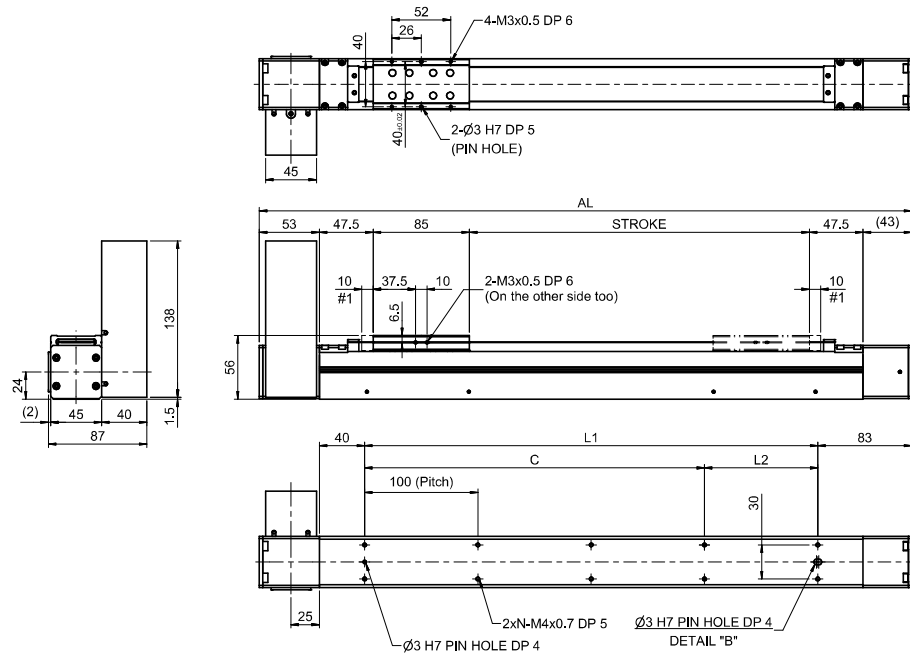
#1 기계 여유 스트로크이며 최대기계 스트로크입니다.

0550 [0570]	0600 [0620]	0650 [0670]	0700 [0720]	0750 [0770]	0800 [0820]	0850 [0870]	0900 [0920]	0950 [0970]	1000 [1020]	1050 [1070]	1100 [1120]	1150 [1170]	1200 [1220]
1400													
840													
826	876	926	976	1026	1076	1126	1176	1226	1276	1326	1376	1426	1476
650	700	750	800	850	900	950	1000	1050	1100	1150	1200	1250	1300
600	700	700	800	800	900	900	1000	1000	1100	1100	1200	1200	1300
50	0	50	0	50	0	50	0	50	0	50	0	50	0
8	8	9	9	10	10	11	11	12	12	13	13	14	14
3	3.1	3.2	3.4	3.5	3.7	3.8	3.9	4.1	4.2	4.3	4.5	4.6	4.8

SAB04

일반형 인장커버 [좌,우] 병렬형 (100W)

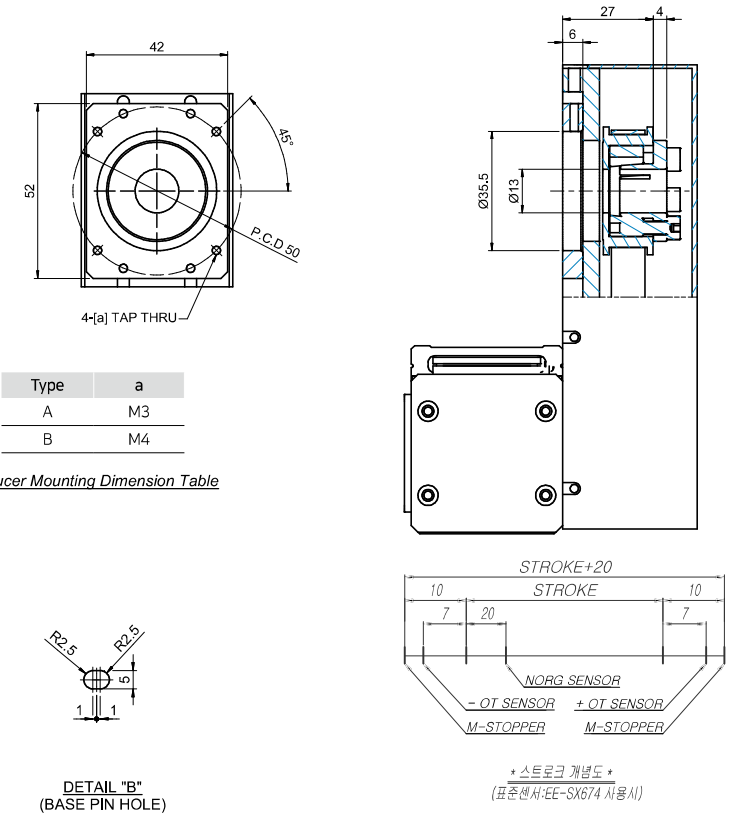
외형도



스트로크[mm] (최대스트로크)		0100 [0120]	0150 [0170]	0200 [0220]	0250 [0270]	0300 [0320]	0350 [0370]	0400 [0420]	0450 [0470]	0500 [0520]
최고속도 [mm/s]	감속비	03	1400							
		05	840							
치수 [mm]	AL	406	456	506	556	606	656	706	756	806
	L1	250	300	350	400	450	500	550	600	650
	C	200	300	300	400	400	500	500	600	600
	L2	50	0	50	0	50	0	50	0	50
취부홀 개수	N	4	4	5	5	6	6	7	7	8
본체 중량 [kg]		2.2	2.3	2.5	2.6	2.7	2.9	3.0	3.2	3.3

#1 기계 여유 스트로크이며 최대기계 스트로크입니다.

상세도

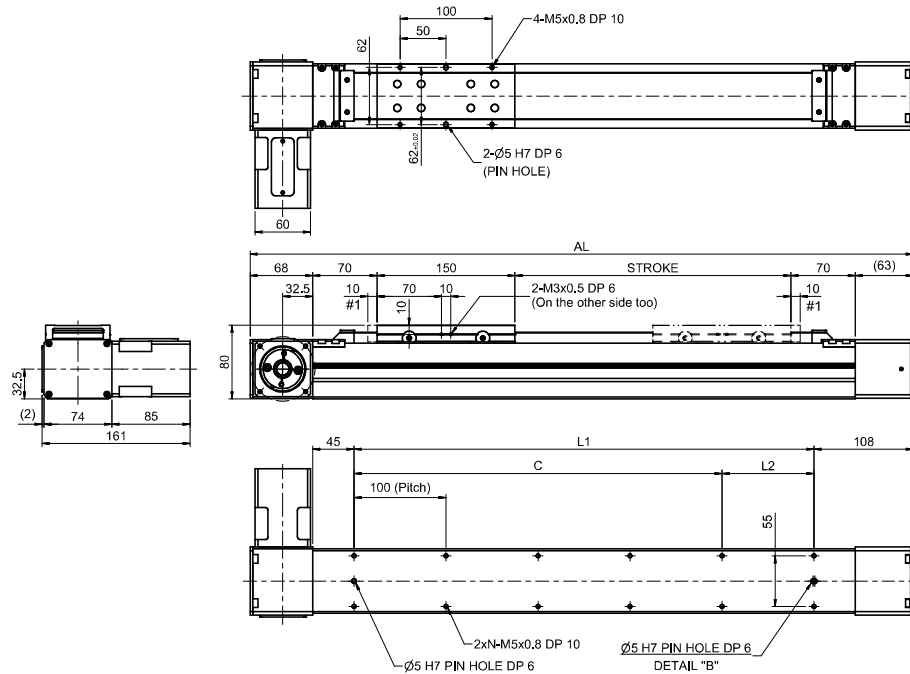


0550 [0570]	0600 [0620]	0650 [0670]	0700 [0720]	0750 [0770]	0800 [0820]	0850 [0870]	0900 [0920]	0950 [0970]	1000 [1020]	1050 [1070]	1100 [1120]	1150 [1170]	1200 [1220]
1400													
840													
856	906	956	1006	1056	1106	1156	1206	1256	1306	1356	1406	1456	1506
700	750	800	850	900	950	1000	1050	1100	1150	1200	1250	1300	1350
700	700	800	800	900	900	1000	1000	1100	1100	1200	1200	1300	1300
0	50	0	50	0	50	0	50	0	50	0	50	0	50
8	9	9	10	10	11	11	12	12	13	13	14	14	15
3.4	3.6	3.7	3.8	4.0	4.1	4.3	4.4	4.5	4.7	4.8	4.9	5.1	5.2

SAB07

일반형 인장커버 직렬형 (400W)

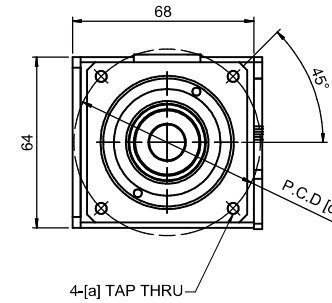
외형도



스트로크[mm] (최대스트로크)			0100 [0120]	0150 [0170]	0200 [0220]	0250 [0270]	0300 [0320]	0350 [0370]	0400 [0420]	0450 [0470]	0500 [0520]	0600 [0620]	0700 [0720]	0800 [0820]	0900 [0920]	1000 [1020]	1100 [1120]	1200 [1220]	
최고속도 [mm/s]	감속비	05	1250																
		10	625																
치수 [mm]	AL		521	571	621	671	721	771	821	871	921	1021	1121	1221	1321	1421	1521	1621	
	L1		300	350	400	450	500	550	600	650	700	800	900	1000	1100	1200	1300	1400	
	C		300	300	400	400	500	500	600	600	700	800	900	1000	1100	1200	1300	1400	
	L2		0	50	0	50	0	50	0	50	0	0	0	0	0	0	0	0	
취부홀 개수		N	4	5	5	6	6	7	7	8	8	9	10	11	12	13	14	15	
본체 중량 [kg]			5.1	5.4	5.7	6	6.3	6.6	6.9	7.2	7.5	8.1	8.7	9.3	9.9	10.5	11	11.6	

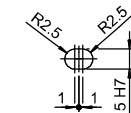
#1 기계 여유 스트로크이며 최대기계 스트로크입니다.

상세도

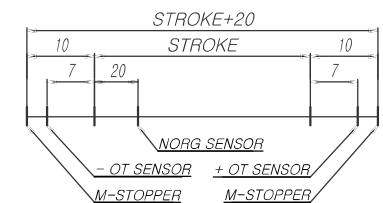
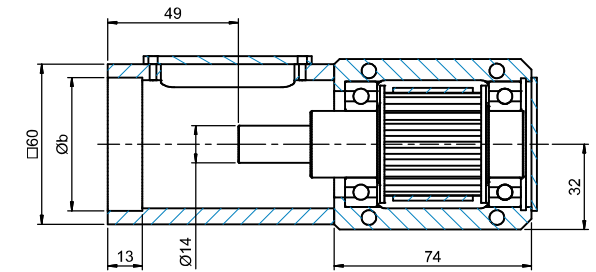


Type	a	b	c
A	M5	50	70
B	M3	35	50
C	M4	35	50

Reducer Mounting Dimension Table



DETAIL "B"
(BASE PIN HOLE)



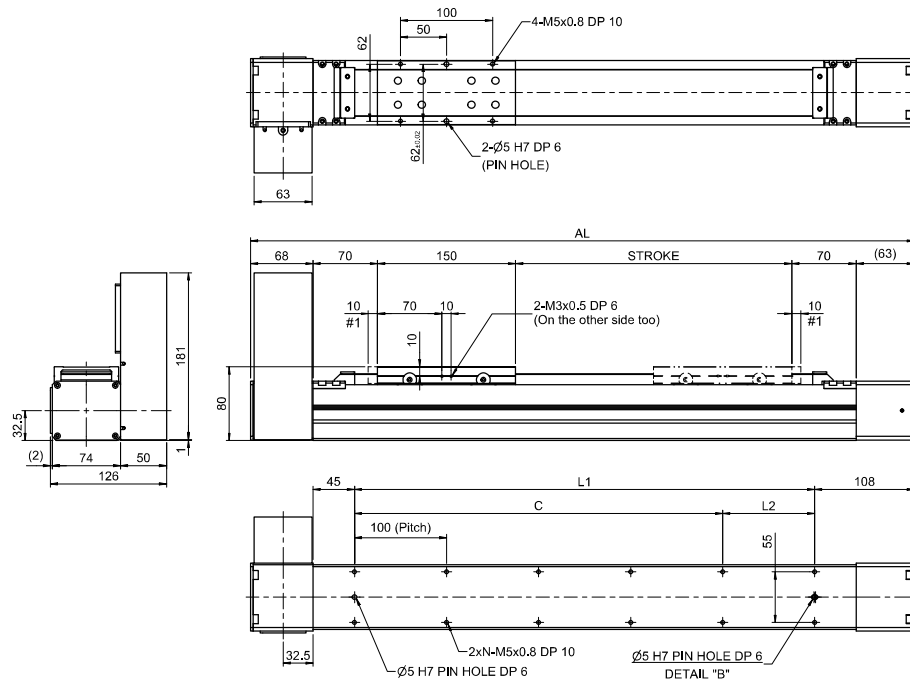
* 스트로크 개념도 *
(표준센서:EE-SX674 사용시)

1300 [1320]	1400 [1420]	1500 [1520]	1600 [1620]	1700 [1720]	1800 [1820]	1900 [1920]	2000 [2020]	2100 [2120]	2200 [2220]	2300 [2320]	2400 [2420]	2500 [2520]	2600 [2620]	2700 [2720]	2800 [2820]	2900 [2920]	3000 [3020]	3100 [3120]	3200 [3220]	3300 [3320]	3400 [3420]	3500 [3520]	3600 [3620]
1250																							
625																							
1721	1821	1921	2021	2121	2221	2321	2421	2521	2621	2721	2821	2921	3021	3121	3221	3321	3421	3521	3621	3721	3821	3921	4021
1500	1600	1700	1800	1900	2000	2100	2200	2300	2400	2500	2600	2700	2800	2900	3000	3100	3200	3300	3400	3500	3600	3700	3800
1500	1600	1700	1800	1900	2000	2100	2200	2300	2400	2500	2600	2700	2800	2900	3000	3100	3200	3300	3400	3500	3600	3700	3800
0	0	0	0	0	0	0	0	0	0	0	0	0	0	0	0	0	0	0	0	0	0	0	0
16	17	18	19	20	21	22	23	24	25	26	27	28	29	30	31	32	33	34	35	36	37	38	39
12.2	12.8	13.4	14	14.6	15.2	15.8	16.4	17	17.6	18.2	18.8	19.4	20	20.5	21.1	21.7	22.3	22.9	23.5	24.1	24.7	25.3	25.9

SAB07

일반형 인장커버 [좌,우] 병렬형 (400W)

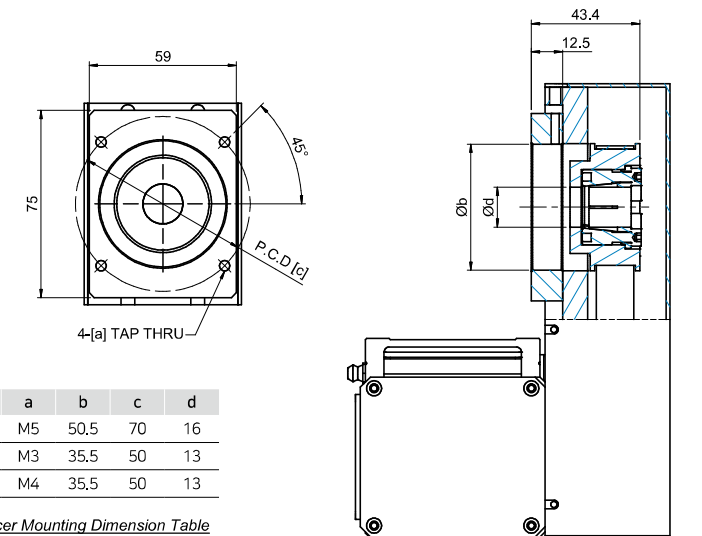
외형도



스트로크[mm] (최대스트로크)			0100 (0120)	0150 (0170)	0200 (0220)	0250 (0270)	0300 (0320)	0350 (0370)	0400 (0420)	0450 (0470)	0500 (0520)	0600 (0620)	0700 (0720)	0800 (0820)	0900 (0920)	1000 (1020)	1100 (1120)	1200 (1220)
최고속도 [mm/s]	감속비	05	1250															
		10	625															
치수 [mm]	AL		521	571	621	671	721	771	821	871	921	1021	1121	1221	1321	1421	1521	1621
	L1		300	350	400	450	500	550	600	650	700	800	900	1000	1100	1200	1300	1400
	C		300	300	400	400	500	500	600	600	700	800	900	1000	1100	1200	1300	1400
	L2		0	50	0	50	0	50	0	50	0	0	0	0	0	0	0	0
취부홀 개수		N	4	5	5	6	6	7	7	8	8	9	10	11	12	13	14	15
본체 중량 [kg]			6.5	6.8	7.1	7.4	7.7	8	8.3	8.6	8.9	9.5	10.1	10.7	11.3	11.9	12.5	13.1

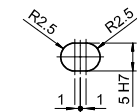
#1 기계 여유 스트로크이며 최대기계 스트로크입니다.

상세도

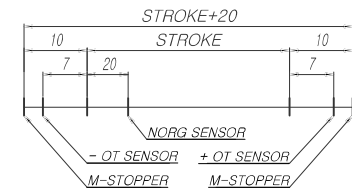


Type	a	b	c	d
A	M5	50,5	70	16
B	M3	35,5	50	13
C	M4	35,5	50	13

Reducer Mounting Dimension Table



DETAIL "B"
(BASE PIN HOLE)



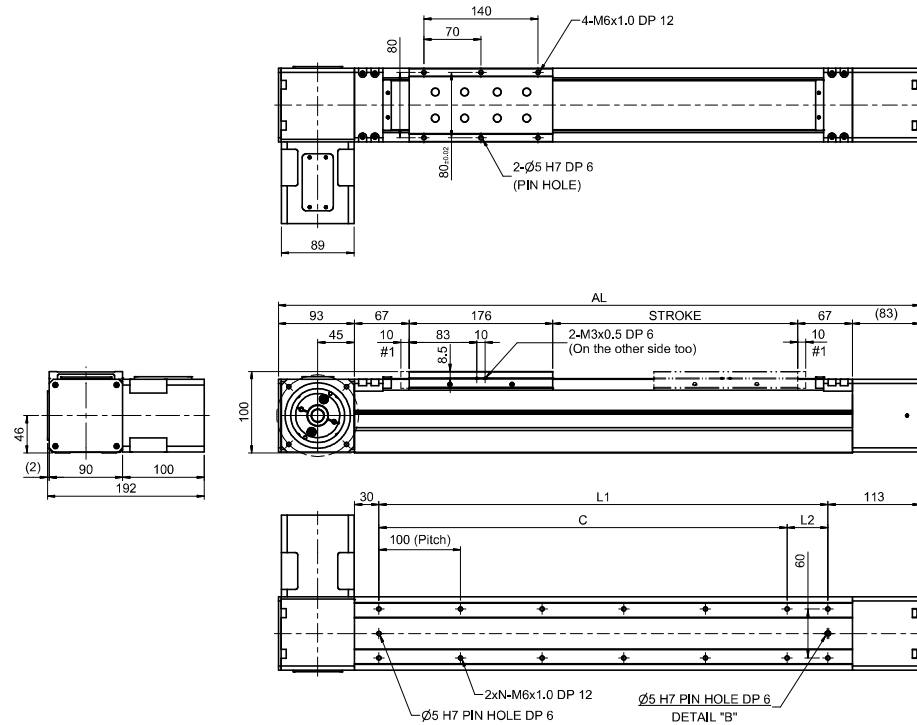
★ 스트로크 개념도 ★
(표준센서:EE-SX674 사용시)

1300 [1320]	1400 [1420]	1500 [1520]	1600 [1620]	1700 [1720]	1800 [1820]	1900 [1920]	2000 [2020]	2100 [2120]	2200 [2220]	2300 [2320]	2400 [2420]	2500 [2520]	2600 [2620]	2700 [2720]	2800 [2820]	2900 [2920]	3000 [3020]	3100 [3120]	3200 [3220]	3300 [3320]	3400 [3420]	3500 [3520]	3600 [3620]
1250																							
625																							
1721	1821	1921	2021	2121	2221	2321	2421	2521	2621	2721	2821	2921	3021	3121	3221	3321	3421	3521	3621	3721	3821	3921	4021
1500	1600	1700	1800	1900	2000	2100	2200	2300	2400	2500	2600	2700	2800	2900	3000	3100	3200	3300	3400	3500	3600	3700	3800
1500	1600	1700	1800	1900	2000	2100	2200	2300	2400	2500	2600	2700	2800	2900	3000	3100	3200	3300	3400	3500	3600	3700	3800
0	0	0	0	0	0	0	0	0	0	0	0	0	0	0	0	0	0	0	0	0	0	0	0
16	17	18	19	20	21	22	23	24	25	26	27	28	29	30	31	32	33	34	35	36	37	38	39
13.7	14.3	14.9	15.5	16.1	16.7	17.3	17.8	18.4	19	19.6	20.2	20.8	21.4	22	22.6	23.2	23.8	24.4	25	25.6	26.2	26.8	27.4

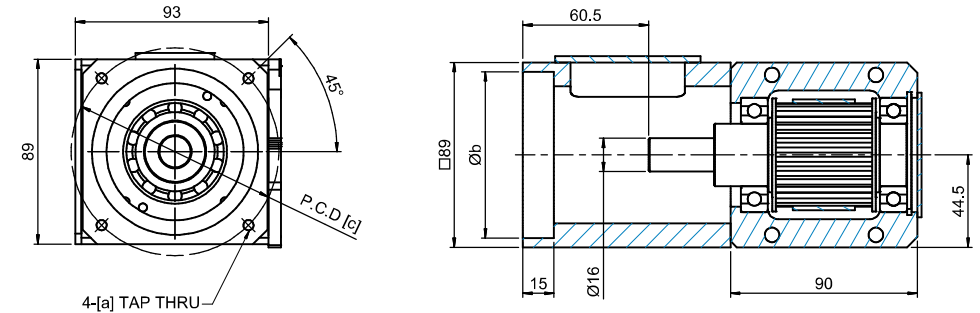
SAB09

일반형 인장커버 직렬형 (750W)

외형도

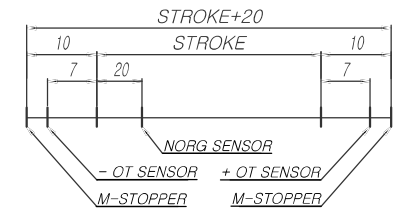
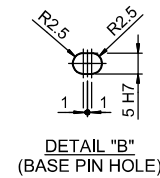


상세도



Type	a	b	c
A	M6	80	100
B	M5	50	70

Reducer Mounting Dimension Table



* 스트로크 개념도 *
(표준센서:EE-SX674 사용시)

스트로크[mm] (최대스트로크)			0100 (0120)	0150 (0170)	0200 (0220)	0250 (0270)	0300 (0320)	0350 (0370)	0400 (0420)	0450 (0470)	0500 (0520)	0600 (0620)	0700 (0720)	0800 (0820)	0900 (0920)	1000 (1020)	1100 (1120)	1200 (1220)
최고속도 [mm/s]	감속비	05	1600															
		10	800															
치수 [mm]	AL	586	636	686	736	786	836	886	936	986	1086	1186	1286	1386	1486	1586	1686	
	L1	350	400	450	500	550	600	650	700	750	850	950	1050	1150	1250	1350	1450	
	C	300	400	400	500	500	600	600	700	700	800	900	1000	1100	1200	1300	1400	
	L2	50	0	50	0	50	0	50	0	50	50	50	50	50	50	50	50	
취부홀 개수		N	5	5	6	6	7	7	8	8	9	10	11	12	13	14	15	16
본체 중량 [kg]			10.2	10.7	11.1	11.6	12	12.4	12.9	13.3	13.8	14.7	15.5	16.4	17.3	18.2	19.1	20

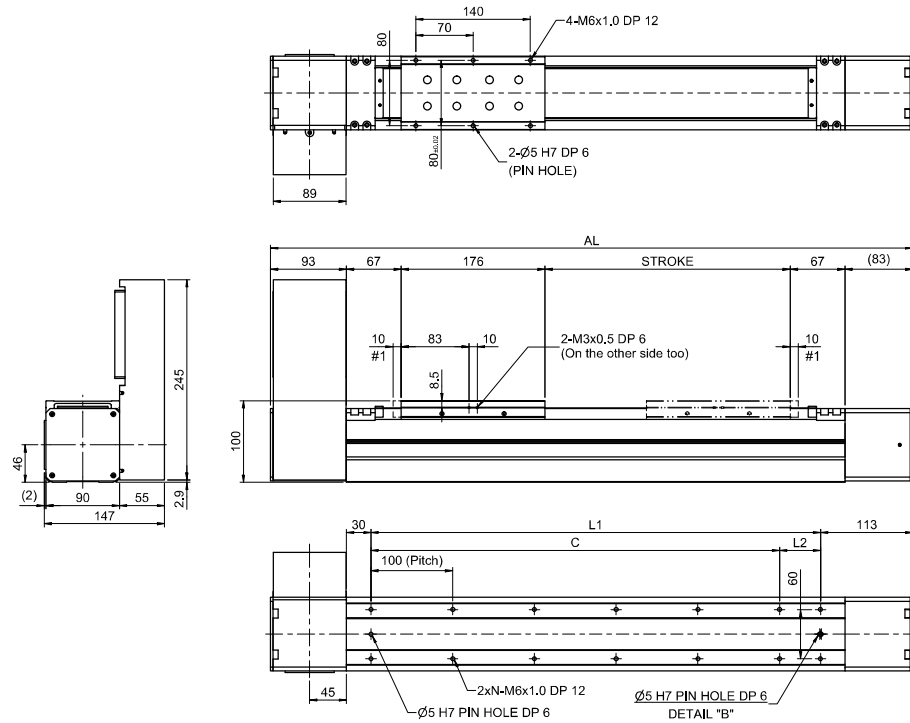
#1 기계 여유 스트로크이며 최대기계 스트로크입니다.

1300 (1320)	1400 (1420)	1500 (1520)	1600 (1620)	1700 (1720)	1800 (1820)	1900 (1920)	2000 (2020)	2100 (2120)	2200 (2220)	2300 (2320)	2400 (2420)	2500 (2520)	2600 (2620)	2700 (2720)	2800 (2820)	2900 (2920)	3000 (3020)	3100 (3120)	3200 (3220)	3300 (3320)	3400 (3420)	3500 (3520)	3600 (3620)
1600																							
800																							
1786	1886	1986	2086	2186	2286	2386	2486	2586	2686	2786	2886	2986	3086	3186	3286	3386	3486	3586	3686	3786	3886	3986	4086
1550	1650	1750	1850	1950	2050	2150	2250	2350	2450	2550	2650	2750	2850	2950	3050	3150	3250	3350	3450	3550	3650	3750	3850
1500	1600	1700	1800	1900	2000	2100	2200	2300	2400	2500	2600	2700	2800	2900	3000	3100	3200	3300	3400	3500	3600	3700	3800
50	50	50	50	50	50	50	50	50	50	50	50	50	50	50	50	50	50	50	50	50	50	50	50
17	18	19	20	21	22	23	24	25	26	27	28	29	30	31	32	33	34	35	36	37	38	39	40
20.8	21.7	22.6	23.5	24.4	25.3	26.1	27	27.9	28.8	29.7	30.6	31.5	32.3	33.2	34.1	35	35.9	36.8	37.6	38.5	39.4	40.3	41.2

SAB09

일반형 인장커버 [좌,우] 병렬형 (750W)

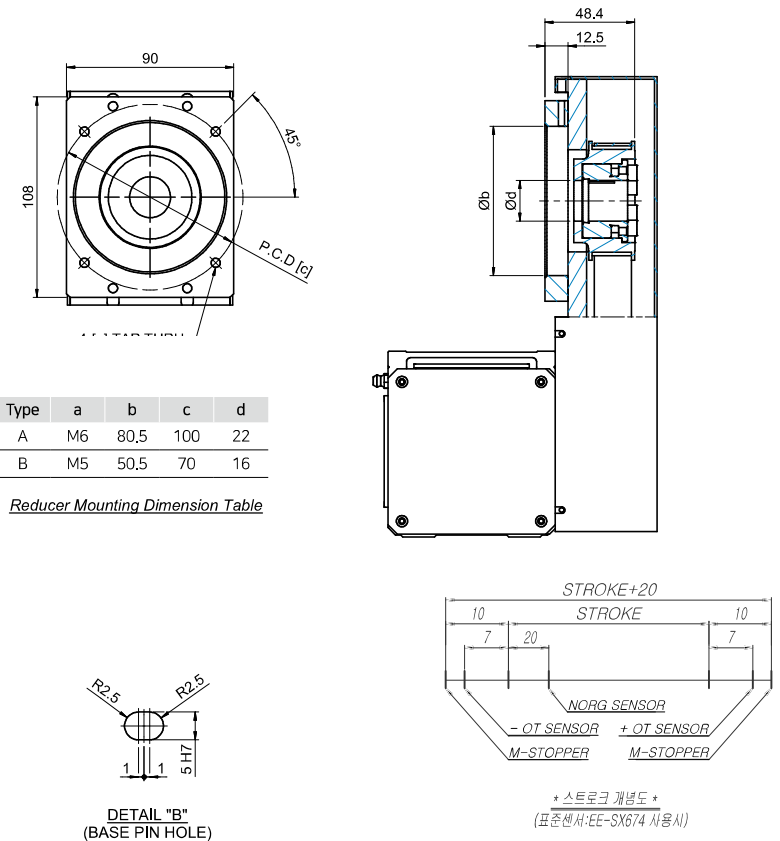
외형도



스트로크[mm] (최대스트로크)		0100 [0120]	0150 [0170]	0200 [0220]	0250 [0270]	0300 [0320]	0350 [0370]	0400 [0420]	0450 [0470]	0500 [0520]	0600 [0620]	0700 [0720]	0800 [0820]	0900 [0920]	1000 [1020]	1100 [1120]	1200 [1220]
최고속도 [mm/s]	감속비	1600															
	10	800															
치수 [mm]	AL	586	636	686	736	786	836	886	936	986	1086	1186	1286	1386	1486	1586	1686
	L1	350	400	450	500	550	600	650	700	750	850	950	1050	1150	1250	1350	1450
	C	300	400	400	500	500	600	600	700	700	800	900	1000	1100	1200	1300	1400
	L2	50	0	50	0	50	0	50	0	50	50	50	50	50	50	50	50
취부홀 개수		N	5	5	6	6	7	7	8	8	9	10	11	12	13	14	16
본체 중량 [kg]			12.2	12.6	13.1	13.5	14	14.4	14.8	15.3	15.7	16.6	17.5	18.4	19.3	20.1	21.9

#1 기계 여유 스트로크이며 최대기계 스트로크입니다.

상세도



Type	a	b	c	d
A	M6	80.5	100	22
B	M5	50.5	70	16

Reducer Mounting Dimension Table

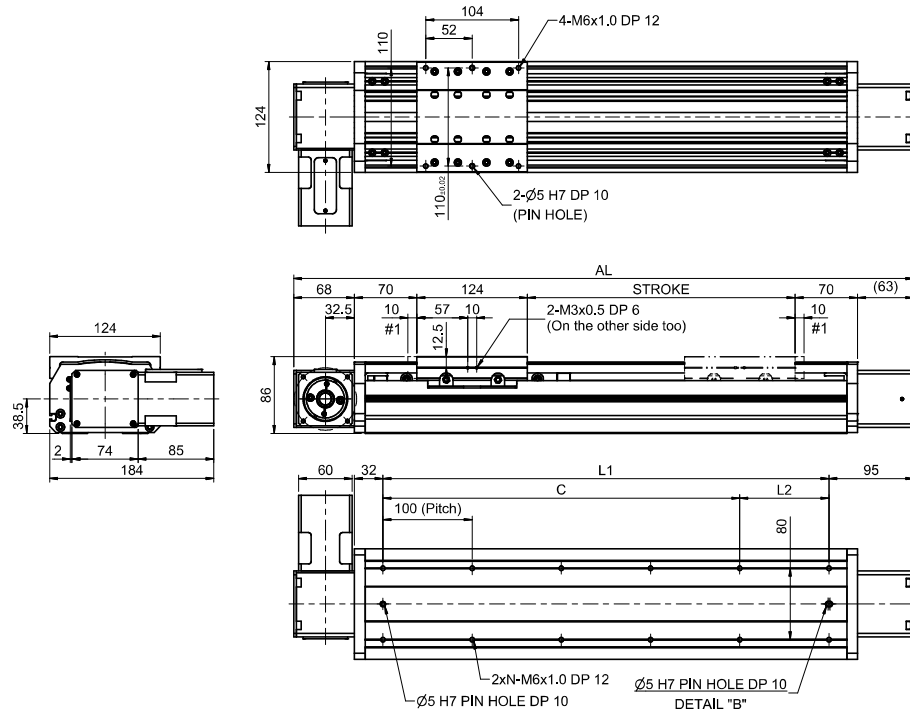
1300 [1320]	1400 [1420]	1500 [1520]	1600 [1620]	1700 [1720]	1800 [1820]	1900 [1920]	2000 [2020]	2100 [2120]	2200 [2220]	2300 [2320]	2400 [2420]	2500 [2520]	2600 [2620]	2700 [2720]	2800 [2820]	2900 [2920]	3000 [3020]	3100 [3120]	3200 [3220]	3300 [3320]	3400 [3420]	3500 [3520]	3600 [3620]
1600																							
800																							
1786	1886	1986	2086	2186	2286	2386	2486	2586	2686	2786	2886	2986	3086	3186	3286	3386	3486	3586	3686	3786	3886	3986	4086
1550	1650	1750	1850	1950	2050	2150	2250	2350	2450	2550	2650	2750	2850	2950	3050	3150	3250	3350	3450	3550	3650	3750	3850
1500	1600	1700	1800	1900	2000	2100	2200	2300	2400	2500	2600	2700	2800	2900	3000	3100	3200	3300	3400	3500	3600	3700	3800
50	50	50	50	50	50	50	50	50	50	50	50	50	50	50	50	50	50	50	50	50	50	50	50
17	18	19	20	21	22	23	24	25	26	27	28	29	30	31	32	33	34	35	36	37	38	39	40
22.8	23.7	24.6	25.4	26.3	27.2	28.1	29	29.9	30.8	31.6	32.5	33.4	34.3	35.2	36.1	36.9	37.8	38.7	39.6	40.5	41.4	42.2	43.1

* 스트로크 개별도 *
(표준센서:EE-SX674 사용시)

SAB12

일반형 AL COVER 커버 직렬형 (400W)

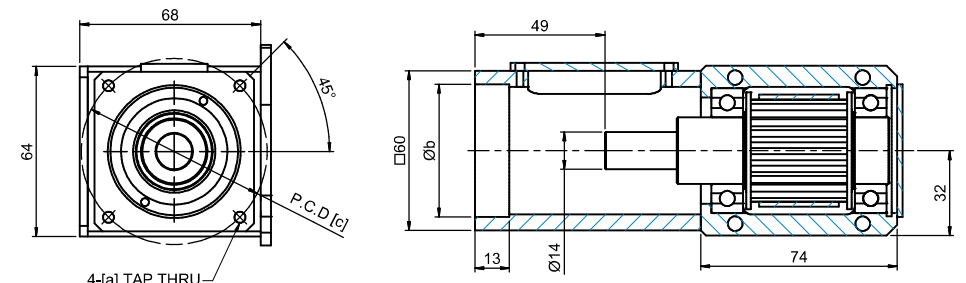
외형도



스트로크[mm] (최대스트로크)			0100 (0120)	0150 (0170)	0200 (0220)	0250 (0270)	0300 (0320)	0350 (0370)	0400 (0420)	0450 (0470)	0500 (0520)	0600 (0620)	0700 (0720)	0800 (0820)	0900 (0920)	1000 (1020)	1100 (1120)	1200 (1220)
최고속도 [mm/s]	감속비	05	1250															
		10	625															
치수 [mm]	AL		495	545	595	645	695	745	795	845	895	995	1095	1195	1295	1395	1495	1595
	L1		300	350	400	450	500	550	600	650	700	800	900	1000	1100	1200	1300	1400
	C		300	300	400	400	500	500	600	600	700	800	900	1000	1100	1200	1300	1400
	L2		0	50	0	50	0	50	0	50	0	0	0	0	0	0	0	0
취부홀 개수		N	4	5	5	6	6	7	7	8	8	9	10	11	12	13	14	15
본체 중량 [kg]			7.4	8	8.5	9	9.6	10.1	10.6	11.2	11.7	12.8	13.8	14.9	15.9	17	18.1	19.1

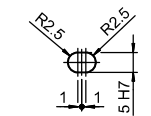
#1 기계 여유 스트로크이며 최대기계 스트로크입니다.

상세도

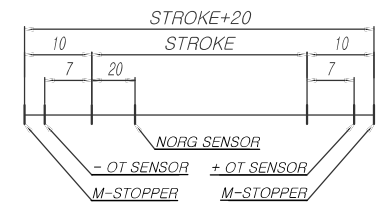


Type	a	b	c
A	M5	50	70
B	M3	35	50
C	M4	35	50

Reducer Mounting Dimension Table



DETAIL "B"
(BASE PIN HOLE)



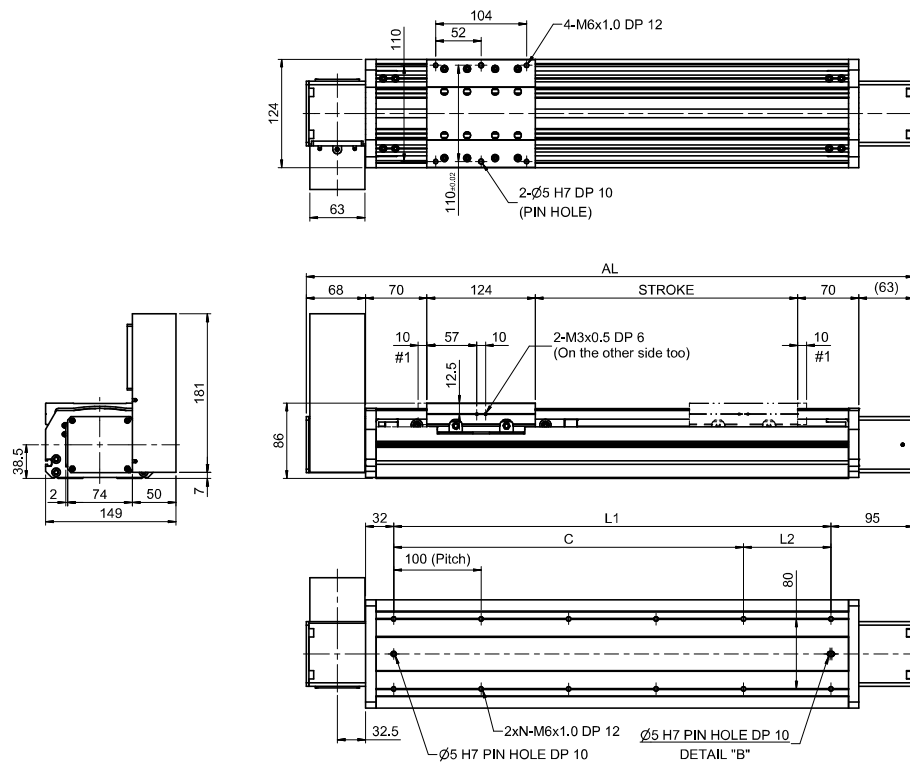
* 스트로크 개념도 *
(표준센서:EE-SX674 사용시)

1300 (1320)	1400 (1420)	1500 (1520)	1600 (1620)	1700 (1720)	1800 (1820)	1900 (1920)	2000 (2020)	2100 (2120)	2200 (2220)	2300 (2320)	2400 (2420)	2500 (2520)	2600 (2620)	2700 (2720)	2800 (2820)	2900 (2920)	3000 (3020)	3100 (3120)	3200 (3220)	3300 (3320)	3400 (3420)	3500 (3520)	3600 (3620)
1250																							
625																							
1695 1795 1895 1995 2095 2195 2295 2395																							
1500 1600 1700 1800 1900 2000 2100 2200																							
1500 1600 1700 1800 1900 2000 2100 2200																							
0 0 0 0 0 0 0 0																							
16 17 18 19 20 21 22 23																							
20.2 21.2 22.3 23.4 24.4 25.5 26.6 27.6																							

SAB12

일반형 AL COVER 커버 [좌,우] 병렬형 (400W)

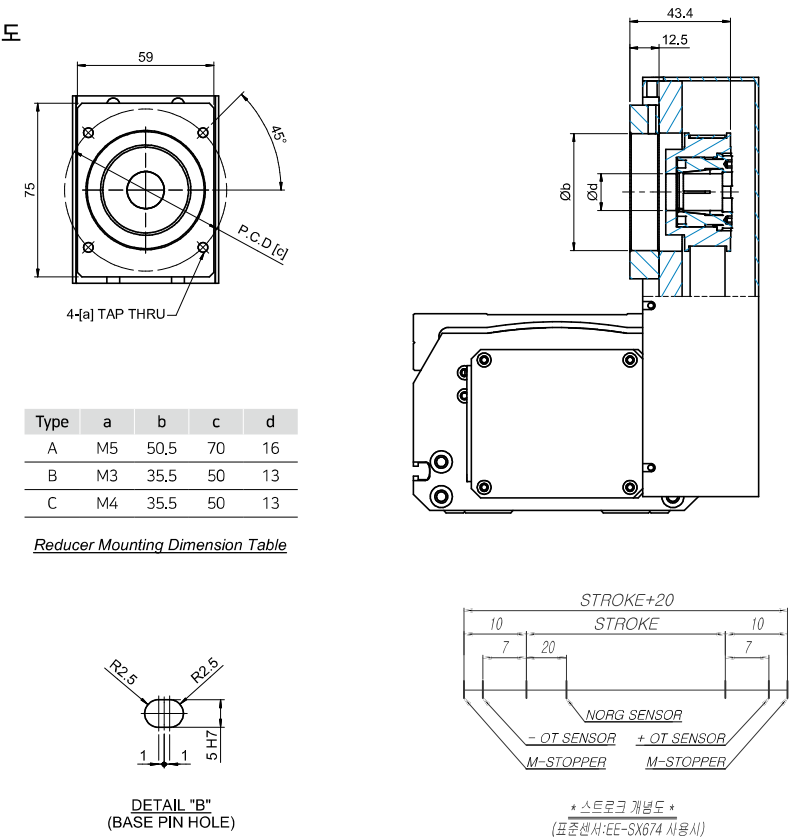
외형도



스트로크[mm] (최대스트로크)			0100 (0120)	0150 (0170)	0200 (0220)	0250 (0270)	0300 (0320)	0350 (0370)	0400 (0420)	0450 (0470)	0500 (0520)	0600 (0620)	0700 (0720)	0800 (0820)	0900 (0920)	1000 (1020)	1100 (1120)	1200 (1220)
최고속도 [mm/s]	감속비	05	1250															
		10	625															
치수 [mm]	AL		495	545	595	645	695	745	795	845	895	995	1095	1195	1295	1395	1495	1595
	L1		300	350	400	450	500	550	600	650	700	800	900	1000	1100	1200	1300	1400
	C		300	300	400	400	500	500	600	600	700	800	900	1000	1100	1200	1300	1400
	L2		0	50	0	50	0	50	0	50	0	0	0	0	0	0	0	0
취부홀 개수		N	4	5	5	6	6	7	7	8	8	9	10	11	12	13	14	15
본체 중량 [kg]			8.9	9.4	9.9	10.5	11	11.5	12.1	12.6	13.1	14.2	15.3	16.3	17.4	18.4	19.5	20.6

#1 기계 여유 스트로크이며 최대기계 스트로크입니다.

상세도



Type	a	b	c	d
A	M5	50.5	70	16
B	M3	35.5	50	13
C	M4	35.5	50	13

Reducer Mounting Dimension Table

1300 (1320)	1400 (1420)	1500 (1520)	1600 (1620)	1700 (1720)	1800 (1820)	1900 (1920)	2000 (2020)	2100 (2120)	2200 (2220)	2300 (2320)	2400 (2420)	2500 (2520)	2600 (2620)	2700 (2720)	2800 (2820)	2900 (2920)	3000 (3020)	3100 (3120)	3200 (3220)	3300 (3320)	3400 (3420)	3500 (3520)	3600 (3620)
1250																							
625																							
1695 1795 1895 1995 2095 2195 2295 2395																							
1500 1600 1700 1800 1900 2000 2100 2200																							
1500 1600 1700 1800 1900 2000 2100 2200																							
0 0 0 0 0 0 0 0																							
16 17 18 19 20 21 22 23																							
21.6 22.7 23.7 24.8 25.9 26.9 28 29.1																							

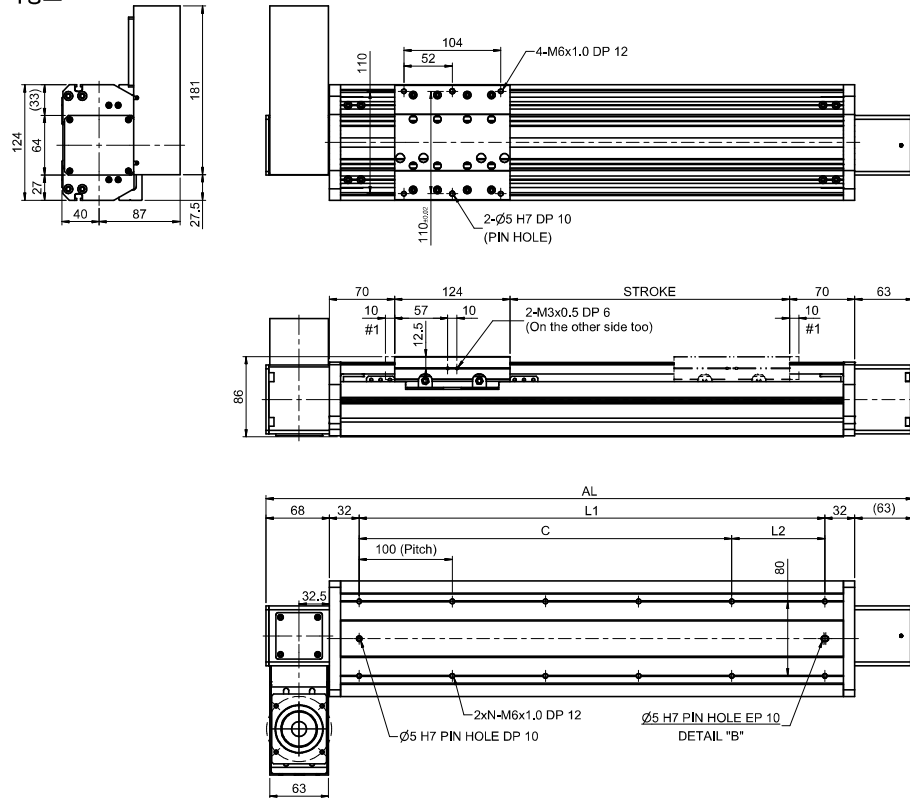
* 스트로크 개별도 *
(표준센서:EE-SX674 사용시)

1300 (1320)	1400 (1420)	1500 (1520)	1600 (1620)	1700 (1720)	1800 (1820)	1900 (1920)	2000 (2020)	2100 (2120)	2200 (2220)	2300 (2320)	2400 (2420)	2500 (2520)	2600 (2620)	2700 (2720)	2800 (2820)	2900 (2920)	3000 (3020)	3100 (3120)	3200 (3220)	3300 (3320)	3400 (3420)	3500 (3520)	3600 (3620)
1250																							
625																							
1695	1795	1895	1995	2095	2195	2295	2395	2495	2595	2695	2795	2895	2995	3095	3195	3295	3395	3495	3595	3695	3795	3895	3995
1500	1600	1700	1800	1900	2000	2100	2200	2300	2400	2500	2600	2700	2800	2900	3000	3100	3200	3300	3400	3500	3600	3700	3800
1500	1600	1700	1800	1900	2000	2100	2200	2300	2400	2500	2600	2700	2800	2900	3000	3100	3200	3300	3400	3500	3600	3700	3800
0	0	0	0	0	0	0	0	0	0	0	0	0	0	0	0	0	0	0	0	0	0	0	0
16	17	18	19	20	21	22	23	24	25	26	27	28	29	30	31	32	33	34	35	36	37	38	39
20.2	21.2	22.3	23.4	24.4	25.5	26.6	27.6	28.7	29.7	30.8	31.9	32.9	34	35	36.1	37.2	38.2	39.3	40.3	41.4	42.5	43.5	44.6

SAB12

일반형 AL COVER 커버 [좌,우] 병렬형 벽면 (400W)

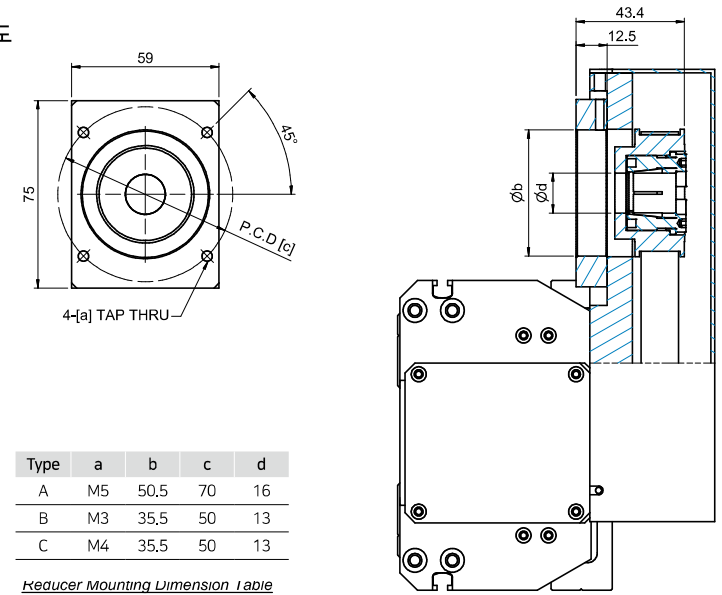
외형도



스트로크[mm] (최대스트로크)			0100 (0120)	0150 (0170)	0200 (0220)	0250 (0270)	0300 (0320)	0350 (0370)	0400 (0420)	0450 (0470)	0500 (0520)	0600 (0620)	0700 (0720)	0800 (0820)	0900 (0920)	1000 (1020)	1100 (1120)	1200 (1220)
최고속도 [mm/s]	감속비	05	1250															
		10	625															
치수 [mm]	AL		495	545	595	645	695	745	795	845	895	995	1095	1195	1295	1395	1495	1595
	L1		300	350	400	450	500	550	600	650	700	800	900	1000	1100	1200	1300	1400
	C		300	300	400	400	500	500	600	600	700	800	900	1000	1100	1200	1300	1400
	L2		0	50	0	50	0	50	0	50	0	0	0	0	0	0	0	0
취부홀 개수		N	4	5	5	6	6	7	7	8	8	9	10	11	12	13	14	15
본체 중량 [kg]			8.9	9.4	9.9	10.5	11	11.5	12.1	12.6	13.1	14.2	15.3	16.3	17.4	18.4	19.5	20.6

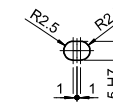
#1 기계 여유 스트로크이며 최대기계 스트로크입니다.

상세도



Type	a	b	c	d
A	M5	50.5	70	16
B	M3	35.5	50	13
C	M4	35.5	50	13

Reducer Mounting Dimension Table



DETAIL "B"
(BASE PIN HOLE)

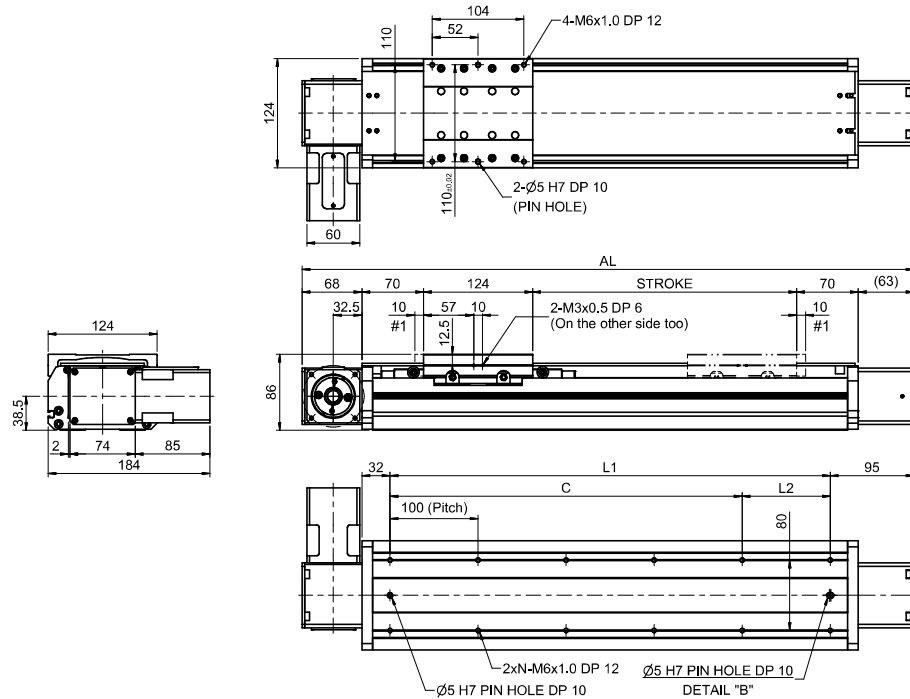
* 스트로크 개념도 *
(표준센서: EE-SX674 사용시)

1300 (1320)	1400 (1420)	1500 (1520)	1600 (1620)	1700 (1720)	1800 (1820)	1900 (1920)	2000 (2020)	2100 (2120)	2200 (2220)	2300 (2320)	2400 (2420)	2500 (2520)	2600 (2620)	2700 (2720)	2800 (2820)	2900 (2920)	3000 (3020)	3100 (3120)	3200 (3220)	3300 (3320)	3400 (3420)	3500 (3520)	3600 (3620)
1250																							
625																							
1695	1795	1895	1995	2095	2195	2295	2395	2495	2595	2695	2795	2895	2995	3095	3195	3295	3395	3495	3595	3695	3795	3895	3995
1500	1600	1700	1800	1900	2000	2100	2200	2300	2400	2500	2600	2700	2800	2900	3000	3100	3200	3300	3400	3500	3600	3700	3800
1500	1600	1700	1800	1900	2000	2100	2200	2300	2400	2500	2600	2700	2800	2900	3000	3100	3200	3300	3400	3500	3600	3700	3800
0	0	0	0	0	0	0	0	0	0	0	0	0	0	0	0	0	0	0	0	0	0	0	0
16	17	18	19	20	21	22	23	24	25	26	27	28	29	30	31	32	33	34	35	36	37	38	39
21.6	22.7	23.7	24.8	25.9	26.9	28	29.1	30.1	31.2	32.2	33.3	34.4	35.4	36.5	37.5	38.6	39.7	40.7	41.8	42.8	43.9	45	46

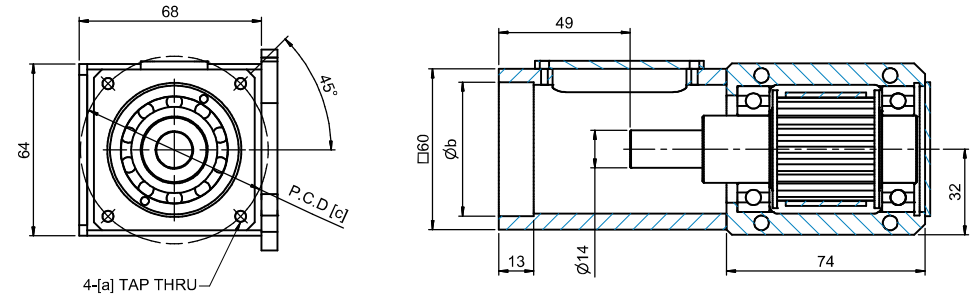
SAB12

일반형 PC COVER 커버 직렬형 (400W)

외형도

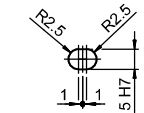


상세도

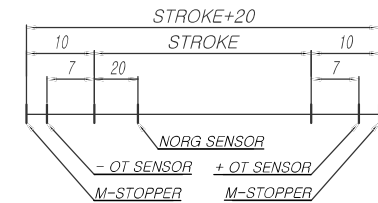


Type	a	b	c
A	M5	50	70
B	M3	35	50
C	M4	35	50

Reducer Mounting Dimension Table



DETAIL "B"
(BASE PIN HOLE)



* 스트로크 개념도 *
(표준센서: EE-SX674 사용시)

스트로크[mm] (최대스트로크)			0100 (0120)	0150 (0170)	0200 (0220)	0250 (0270)	0300 (0320)	0350 (0370)	0400 (0420)	0450 (0470)	0500 (0520)	0600 (0620)	0700 (0720)	0800 (0820)	0900 (0920)	1000 (1020)	1100 (1120)	1200 (1220)
최고속도 [mm/s]	감속비	05	1250															
		10	625															
치수 [mm]	AL	495	545	595	645	695	745	795	845	895	995	1095	1195	1295	1395	1495	1595	
	L1	300	350	400	450	500	550	600	650	700	800	900	1000	1100	1200	1300	1400	
	C	300	300	400	400	500	500	600	600	700	800	900	1000	1100	1200	1300	1400	
	L2	0	50	0	50	0	50	0	50	0	0	0	0	0	0	0	0	0
취부홀 개수		N	4	5	5	6	6	7	7	8	8	9	10	11	12	13	14	15
본체 중량 [kg]			7	7.5	8	8.5	9	9.5	9.9	10.4	10.9	11.9	12.8	13.8	14.8	15.7	16.7	17.6

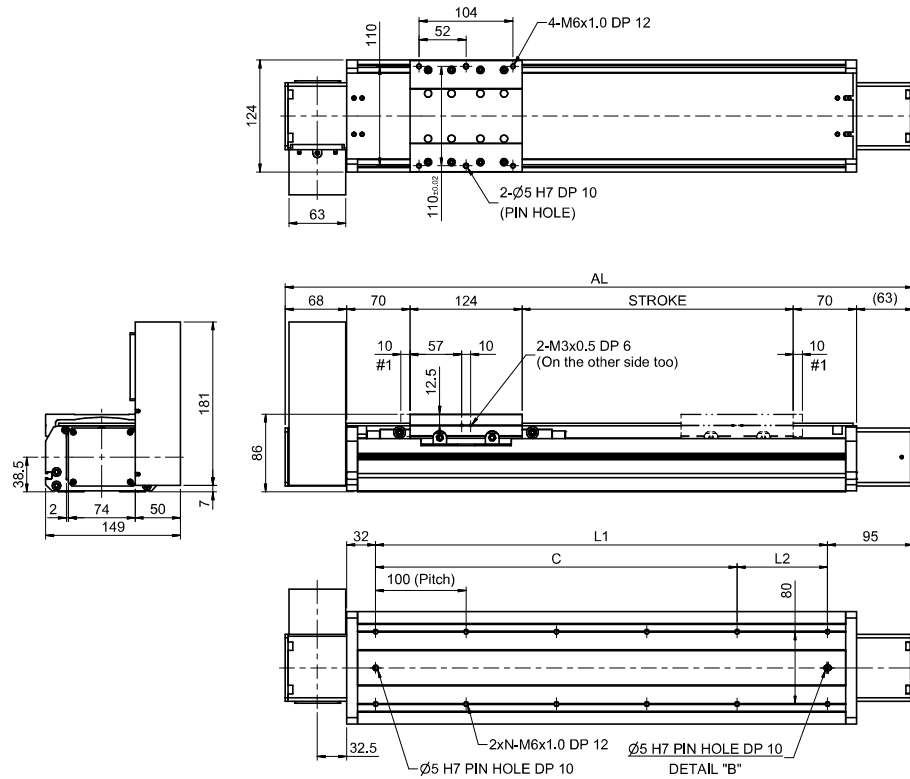
#1 기계 여유 스트로크이며 최대기계 스트로크입니다.

1300 (1320)	1400 (1420)	1500 (1520)	1600 (1620)	1700 (1720)	1800 (1820)	1900 (1920)	2000 (2020)	2100 (2120)	2200 (2220)	2300 (2320)	2400 (2420)	2500 (2520)	2600 (2620)	2700 (2720)	2800 (2820)	2900 (2920)	3000 (3020)	3100 (3120)	3200 (3220)	3300 (3320)	3400 (3420)	3500 (3520)	3600 (3620)
1250																							
625																							
1695	1795	1895	1995	2095	2195	2295	2395	2495	2595	2695	2795	2895	2995	3095	3195	3295	3395	3495	3595	3695	3795	3895	3995
1500	1600	1700	1800	1900	2000	2100	2200	2300	2400	2500	2600	2700	2800	2900	3000	3100	3200	3300	3400	3500	3600	3700	3800
1500	1600	1700	1800	1900	2000	2100	2200	2300	2400	2500	2600	2700	2800	2900	3000	3100	3200	3300	3400	3500	3600	3700	3800
0	0	0	0	0	0	0	0	0	0	0	0	0	0	0	0	0	0	0	0	0	0	0	0
16	17	18	19	20	21	22	23	24	25	26	27	28	29	30	31	32	33	34	35	36	37	38	39
18.6	19.6	20.5	21.5	22.4	23.4	24.4	25.3	26.3	27.3	28.2	29.2	30.1	31.1	32.1	33	34	35	35.9	36.9	37.8	38.8	39.8	40.7

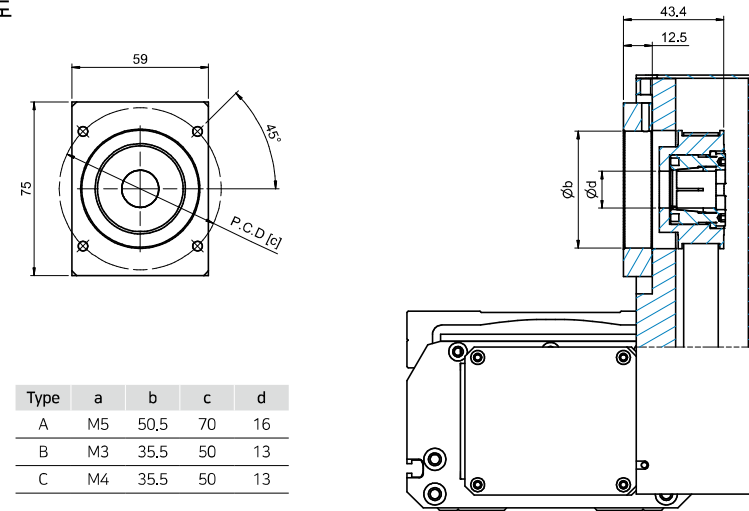
SAB12

일반형 PC COVER 커버 [좌,우] 병렬형 (400W)

외형도

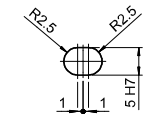


상세도

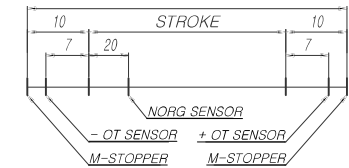


Type	a	b	c	d
A	M5	50.5	70	16
B	M3	35.5	50	13
C	M4	35.5	50	13

Reducer Mounting Dimension Table



DETAIL "B"
(BASE PIN HOLE)



* 스트로크 개별도 *
(표준센서: EE-SX674 사용시)

스트로크[mm] (최대스트로크)			0100 (0120)	0150 (0170)	0200 (0220)	0250 (0270)	0300 (0320)	0350 (0370)	0400 (0420)	0450 (0470)	0500 (0520)	0600 (0620)	0700 (0720)	0800 (0820)	0900 (0920)	1000 (1020)	1100 (1120)	1200 (1220)	
최고속도 [mm/s]	감속비	05	1250																
		10	625																
치수 [mm]	AL		495	545	595	645	695	745	795	845	895	995	1095	1195	1295	1395	1495	1595	
	L1		300	350	400	450	500	550	600	650	700	800	900	1000	1100	1200	1300	1400	
	C		300	300	400	400	500	500	600	600	700	800	900	1000	1100	1200	1300	1400	
	L2		0	50	0	50	0	50	0	50	0	0	0	0	0	0	0	0	
취부홀 개수		N	4	5	5	6	6	7	7	8	8	9	10	11	12	13	14	15	
본체 중량 [kg]			8.4	8.9	9.4	9.9	10.3	10.8	11.3	11.8	12.3	13.2	14.2	15.2	16.1	17.1	18	19	

#1 기계 여유 스트로크이며 최대기계 스트로크입니다.

1300 (1320)	1400 (1420)	1500 (1520)	1600 (1620)	1700 (1720)	1800 (1820)	1900 (1920)	2000 (2020)	2100 (2120)	2200 (2220)	2300 (2320)	2400 (2420)	2500 (2520)	2600 (2620)	2700 (2720)	2800 (2820)	2900 (2920)	3000 (3020)	3100 (3120)	3200 (3220)	3300 (3320)	3400 (3420)	3500 (3520)	3600 (3620)
1250																							
625																							
1695	1795	1895	1995	2095	2195	2295	2395	2495	2595	2695	2795	2895	2995	3095	3195	3295	3395	3495	3595	3695	3795	3895	3995
1500	1600	1700	1800	1900	2000	2100	2200	2300	2400	2500	2600	2700	2800	2900	3000	3100	3200	3300	3400	3500	3600	3700	3800
1500	1600	1700	1800	1900	2000	2100	2200	2300	2400	2500	2600	2700	2800	2900	3000	3100	3200	3300	3400	3500	3600	3700	3800
0	0	0	0	0	0	0	0	0	0	0	0	0	0	0	0	0	0	0	0	0	0	0	0
16	17	18	19	20	21	22	23	24	25	26	27	28	29	30	31	32	33	34	35	36	37	38	39
20	20.9	21.9	22.8	23.8	24.8	25.7	26.7	27.7	28.6	29.6	30.5	31.5	32.5	33.4	34.4	35.4	36.3	37.3	38.2	39.2	40.2	41.1	42.1

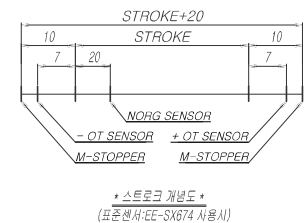
일반형 PC COVER 커버 직렬형 벽면 (400W)

[illegible]

스트로크[mm] (최대스트로크)			0100 (0120)	0150 (0170)	0200 (0220)	0250 (0270)	0300 (0320)	0350 (0370)	0400 (0420)	0450 (0470)	0500 (0520)	0600 (0620)	0700 (0720)	0800 (0820)	0900 (0920)	1000 (1020)	1100 (1120)	1200 (1220)
최고속도 [mm/s]	감속비	05	1250															
		10	625															
치수 [mm]	AL		495	545	595	645	695	745	795	845	895	995	1095	1195	1295	1395	1495	1595
	L1		300	350	400	450	500	550	600	650	700	800	900	1000	1100	1200	1300	1400
	C		300	300	400	400	500	500	600	600	700	800	900	1000	1100	1200	1300	1400
	L2		0	50	0	50	0	50	0	50	0	0	0	0	0	0	0	0
취부홀 개수		N	4	5	5	6	6	7	7	8	8	9	10	11	12	13	14	15
본체 중량 [kg]			7	7.5	8	8.5	9	9.5	9.9	10.4	10.9	11.9	12.8	13.8	14.8	15.7	16.7	17.6

Type	a	b	c
A	M5	50	70
B	M3	35	50
C	M4	35	50

DETAIL "B"
(BASE PIN HOLE)

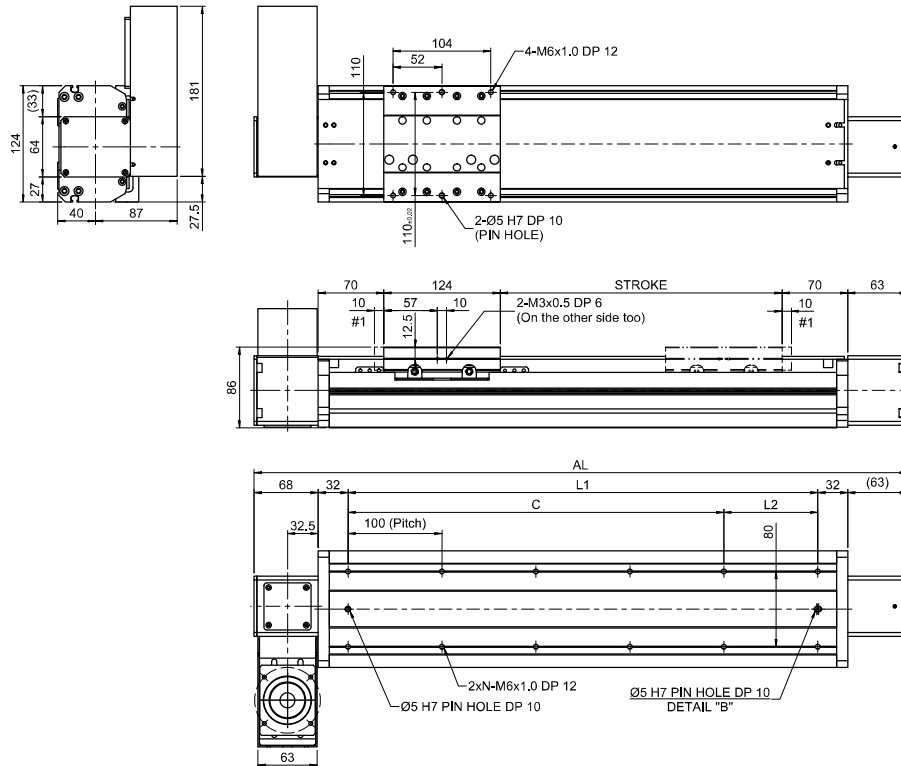


1300 [1320]	1400 [1420]	1500 [1520]	1600 [1620]	1700 [1720]	1800 [1820]	1900 [1920]	2000 [2020]	2100 [2120]	2200 [2220]	2300 [2320]	2400 [2420]	2500 [2520]	2600 [2620]	2700 [2720]	2800 [2820]	2900 [2920]	3000 [3020]	3100 [3120]	3200 [3220]	3300 [3320]	3400 [3420]	3500 [3520]	3600 [3620]
1250																							
625																							
1695	1795	1895	1995	2095	2195	2295	2395	2495	2595	2695	2795	2895	2995	3095	3195	3295	3395	3495	3595	3695	3795	3895	3995
1500	1600	1700	1800	1900	2000	2100	2200	2300	2400	2500	2600	2700	2800	2900	3000	3100	3200	3300	3400	3500	3600	3700	3800
1500	1600	1700	1800	1900	2000	2100	2200	2300	2400	2500	2600	2700	2800	2900	3000	3100	3200	3300	3400	3500	3600	3700	3800
0	0	0	0	0	0	0	0	0	0	0	0	0	0	0	0	0	0	0	0	0	0	0	0
16	17	18	19	20	21	22	23	24	25	26	27	28	29	30	31	32	33	34	35	36	37	38	39
18.6	19.6	20.5	21.5	22.4	23.4	24.4	25.3	26.3	27.3	28.2	29.2	30.1	31.1	32.1	33	34	35	35.9	36.9	37.8	38.8	39.8	40.7

SAB12

일반형 PC COVER 커버 [좌,우] 병렬형 벽면 (400W)

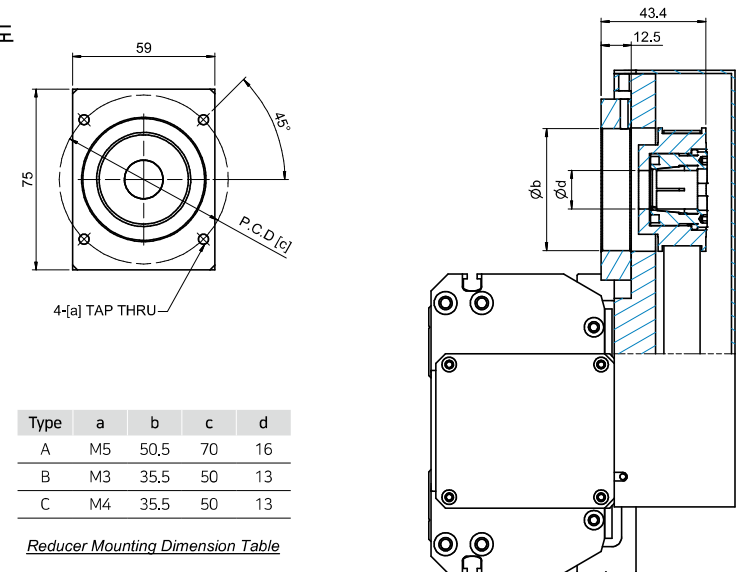
외형도



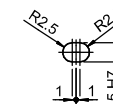
스트로크[mm] (최대스트로크)			0100 (0120)	0150 (0170)	0200 (0220)	0250 (0270)	0300 (0320)	0350 (0370)	0400 (0420)	0450 (0470)	0500 (0520)	0600 (0620)	0700 (0720)	0800 (0820)	0900 (0920)	1000 (1020)	1100 (1120)	1200 (1220)
최고속도 [mm/s]	감속비	05	1250															
		10	625															
치수 [mm]	AL	495	545	595	645	695	745	795	845	895	995	1095	1195	1295	1395	1495	1595	
	L1	300	350	400	450	500	550	600	650	700	800	900	1000	1100	1200	1300	1400	
	C	300	300	400	400	500	500	600	600	700	800	900	1000	1100	1200	1300	1400	
	L2	0	50	0	50	0	50	0	50	0	0	0	0	0	0	0	0	0
취부홀 개수	N	4	5	5	6	6	7	7	8	8	9	10	11	12	13	14	15	
본체 중량 [kg]			8.4	8.9	9.4	9.9	10.3	10.8	11.3	11.8	12.3	13.2	14.2	15.2	16.1	17.1	18	19

#1 기계 여유 스트로크이며 최대기계 스트로크입니다.

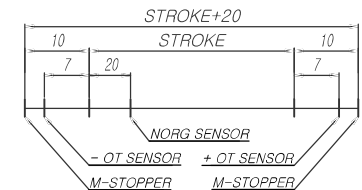
상세도



Type	a	b	c	d
A	M5	50,5	70	16
B	M3	35,5	50	13
C	M4	35,5	50	13



DETAIL "B"
(BASE PIN HOLE)



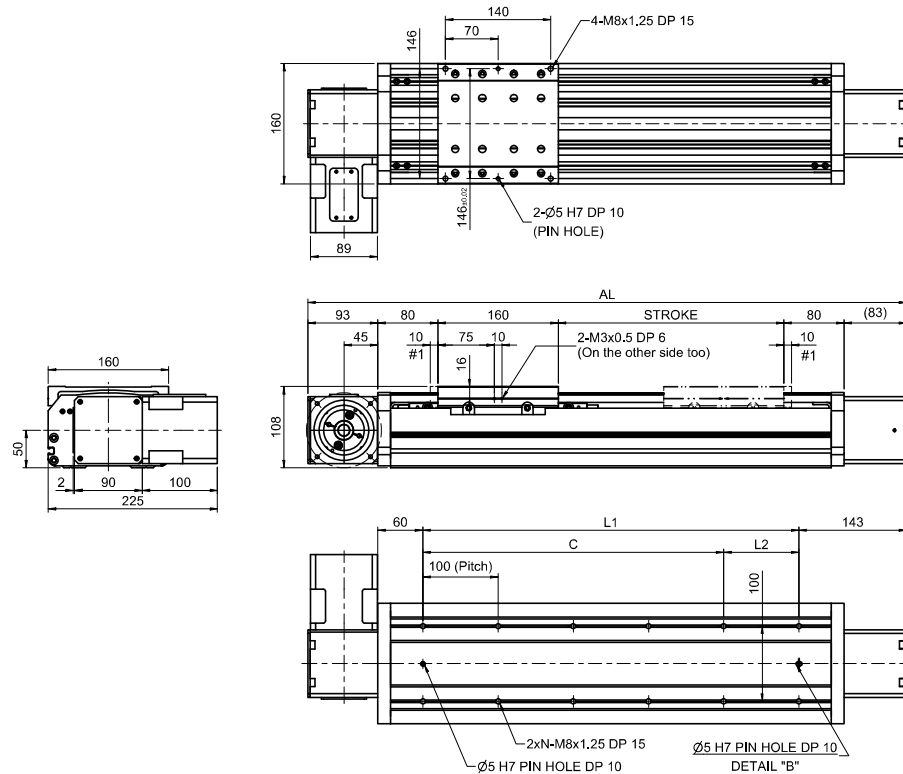
* 스트로크 개념도 *
(표준센서:EE-SX674 사용시)

1300 (1320)	1400 (1420)	1500 (1520)	1600 (1620)	1700 (1720)	1800 (1820)	1900 (1920)	2000 (2020)	2100 (2120)	2200 (2220)	2300 (2320)	2400 (2420)	2500 (2520)	2600 (2620)	2700 (2720)	2800 (2820)	2900 (2920)	3000 (3020)	3100 (3120)	3200 (3220)	3300 (3320)	3400 (3420)	3500 (3520)	3600 (3620)
1250																							
625																							
1695	1795	1895	1995	2095	2195	2295	2395	2495	2595	2695	2795	2895	2995	3095	3195	3295	3395	3495	3595	3695	3795	3895	3995
1500	1600	1700	1800	1900	2000	2100	2200	2300	2400	2500	2600	2700	2800	2900	3000	3100	3200	3300	3400	3500	3600	3700	3800
1500	1600	1700	1800	1900	2000	2100	2200	2300	2400	2500	2600	2700	2800	2900	3000	3100	3200	3300	3400	3500	3600	3700	3800
0	0	0	0	0	0	0	0	0	0	0	0	0	0	0	0	0	0	0	0	0	0	0	0
16	17	18	19	20	21	22	23	24	25	26	27	28	29	30	31	32	33	34	35	36	37	38	39
20	20.9	21.9	22.8	23.8	24.8	25.7	26.7	27.7	28.6	29.6	30.5	31.5	32.5	33.4	34.4	35.4	36.3	37.3	38.2	39.2	40.2	41.1	42.1

SAB16

일반형 AL COVER 커버 직렬형 (750W)

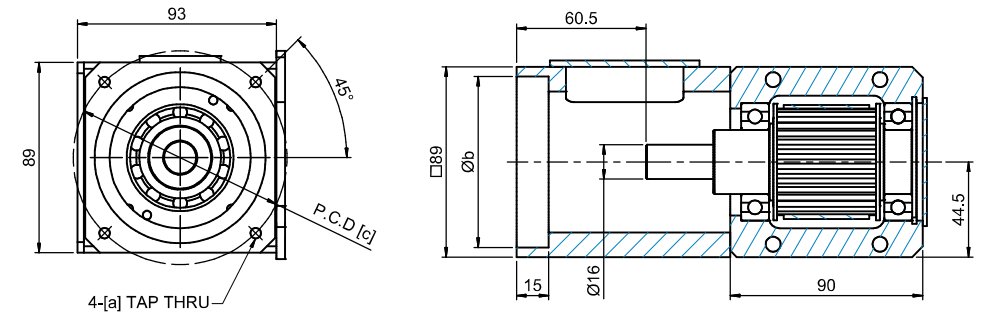
외형도



스트로크[mm] (최대스트로크)			0100 (0120)	0150 (0170)	0200 (0220)	0250 (0270)	0300 (0320)	0350 (0370)	0400 (0420)	0450 (0470)	0500 (0520)	0600 (0620)	0700 (0720)	0800 (0820)	0900 (0920)	1000 (1020)	1100 (1120)	1200 (1220)	
최고속도 [mm/s]	감속비	05	1600																
		10	800																
치수 [mm]	AL		59%	64%	69%	74%	79%	84%	89%	94%	99%	109%	119%	129%	139%	149%	159%	169%	
	L1		300	350	400	450	500	550	600	650	700	800	900	1000	1100	1200	1300	1400	
	C		300	300	400	400	500	500	600	600	700	800	900	1000	1100	1200	1300	1400	
	L2		0	50	0	50	0	50	0	50	0	0	0	0	0	0	0	0	
취부홀 개수		N	4	5	5	6	6	7	7	8	8	9	10	11	12	13	14	15	
본체 중량 [kg]			14.6	15.5	16.3	17.2	18.1	18.9	19.8	20.6	21.5	23.2	24.9	26.7	28.4	30.1	31.8	33.5	

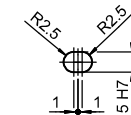
#1 기계 여유 스트로크이며 최대기계 스트로크입니다.

상세도

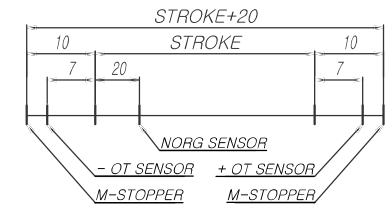


Type	a	b	c
A	M6	80	100
B	M5	50	70

Reducer Mounting Dimension Table



DETAIL "B"
(BASE PIN HOLE)



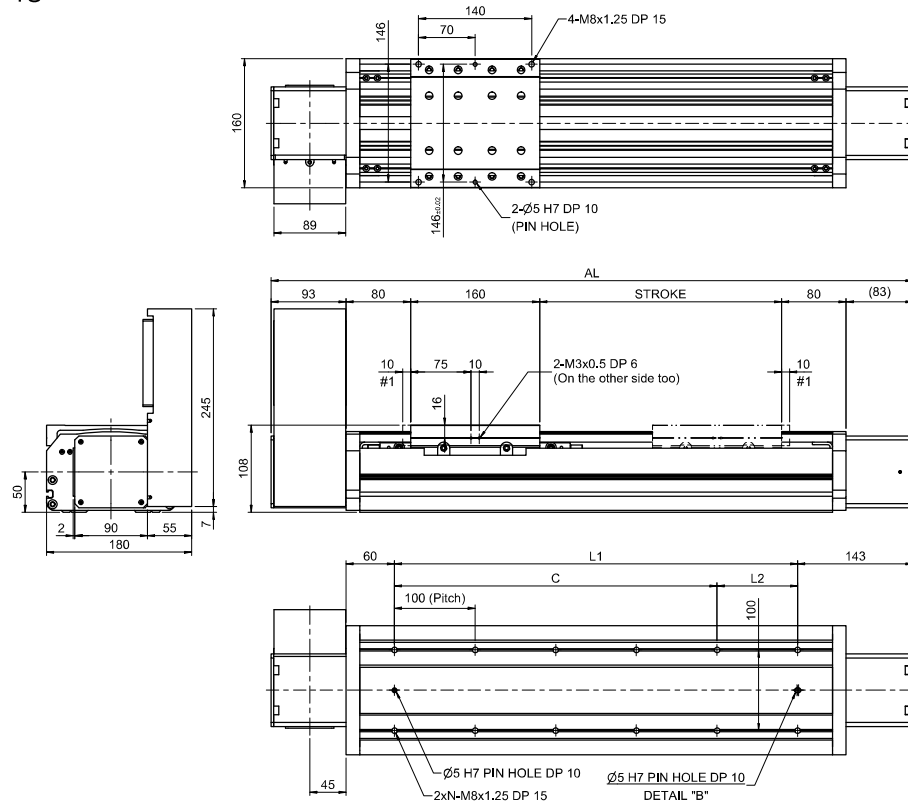
* 스트로크 개념도 *
(표준센서:EE-SX674 사용시)

1300 (1320)	1400 (1420)	1500 (1520)	1600 (1620)	1700 (1720)	1800 (1820)	1900 (1920)	2000 (2020)	2100 (2120)	2200 (2220)	2300 (2320)	2400 (2420)	2500 (2520)	2600 (2620)	2700 (2720)	2800 (2820)	2900 (2920)	3000 (3020)	3100 (3120)	3200 (3220)	3300 (3320)	3400 (3420)	3500 (3520)	3600 (3620)
1600																							
800																							
1796	1896	1996	2096	2196	2296	2396	2496																
1500	1600	1700	1800	1900	2000	2100	2200																
1500	1600	1700	1800	1900	2000	2100	2200																
0	0	0	0	0	0	0	0																
16	17	18	19	20	21	22	23																
35.2	37	38.7	40.4	42.1	43.8	45.5	47.3																

SAB16

일반형 AL COVER 커버 [좌,우] 병렬형 (750W)

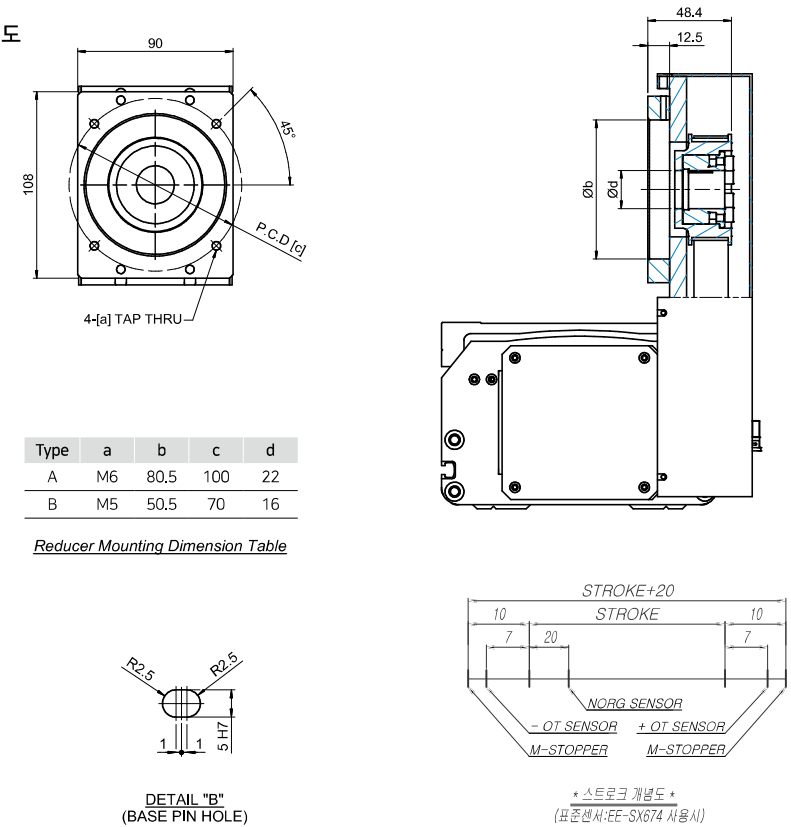
외형도



스트로크[mm] (최대스트로크)			0100 (0120)	0150 (0170)	0200 (0220)	0250 (0270)	0300 (0320)	0350 (0370)	0400 (0420)	0450 (0470)	0500 (0520)	0600 (0620)	0700 (0720)	0800 (0820)	0900 (0920)	1000 (1020)	1100 (1120)	1200 (1220)
최고속도 [mm/s]	감속비	05	1600															
		10	800															
치수 [mm]	AL		596	646	696	746	796	846	896	946	996	1096	1196	1296	1396	1496	1596	1696
	L1		300	350	400	450	500	550	600	650	700	800	900	1000	1100	1200	1300	1400
	C		300	300	400	400	500	500	600	600	700	800	900	1000	1100	1200	1300	1400
	L2		0	50	0	50	0	50	0	50	0	0	0	0	0	0	0	0
취부홀 개수		N	4	5	5	6	6	7	7	8	8	9	10	11	12	13	14	15
본체 중량 [kg]			16.9	17.8	18.6	19.5	20.3	21.2	22.1	22.9	23.8	25.5	27.2	28.9	30.6	32.4	34.1	35.8

#1 기계 여유 스트로크이며 최대기계 스트로크입니다.

상세도

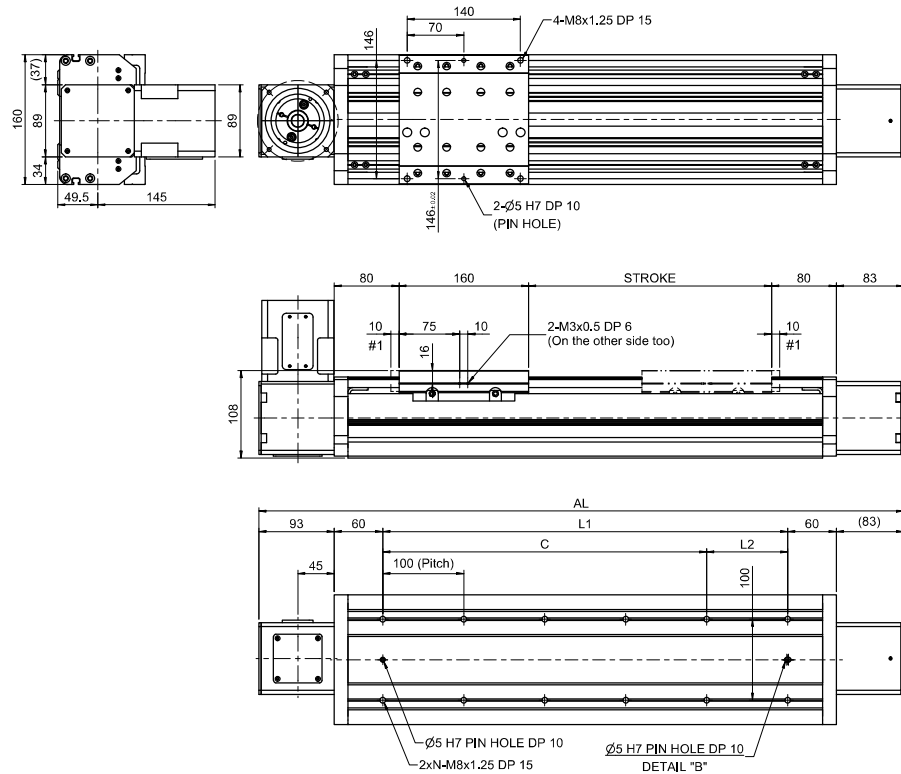


1300 (1320)	1400 (1420)	1500 (1520)	1600 (1620)	1700 (1720)	1800 (1820)	1900 (1920)	2000 (2020)	2100 (2120)	2200 (2220)	2300 (2320)	2400 (2420)	2500 (2520)	2600 (2620)	2700 (2720)	2800 (2820)	2900 (2920)	3000 (3020)	3100 (3120)	3200 (3220)	3300 (3320)	3400 (3420)	3500 (3520)	3600 (3620)
1600																							
800																							
1796	1896	1996	2096	2196	2296	2396	2496																
1500	1600	1700	1800	1900	2000	2100	2200																
1500	1600	1700	1800	1900	2000	2100	2200																
0	0	0	0	0	0	0	0																
16	17	18	19	20	21	22	23																
37.5	39.2	41	42.7	44.4	46.1	47.8	49.5																

SAB16

일반형 AL COVER 커버 직렬형 벽면 (750W)

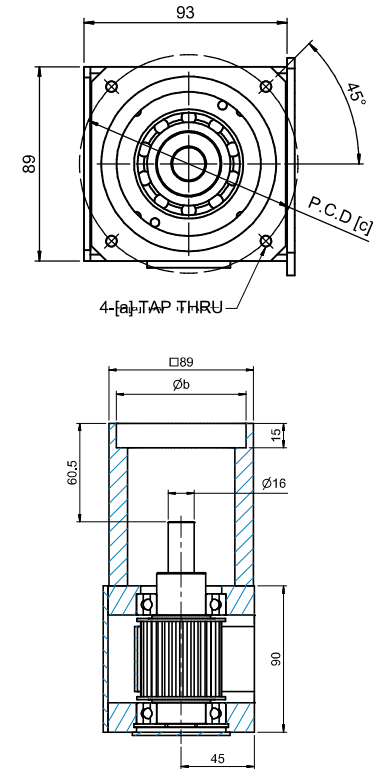
외형도



스트로크[mm] (최대스트로크)			0100 (0120)	0150 (0170)	0200 (0220)	0250 (0270)	0300 (0320)	0350 (0370)	0400 (0420)	0450 (0470)	0500 (0520)	0600 (0620)	0700 (0720)	0800 (0820)	0900 (0920)	1000 (1020)	1100 (1120)	1200 (1220)
최고속도 [mm/s]	감속비	05	1600															
		10	800															
치수 [mm]	AL		596	646	696	746	796	846	896	946	996	1096	1196	1296	1396	1496	1596	1696
	L1		300	350	400	450	500	550	600	650	700	800	900	1000	1100	1200	1300	1400
	C		300	300	400	400	500	500	600	600	700	800	900	1000	1100	1200	1300	1400
	L2		0	50	0	50	0	50	0	50	0	0	0	0	0	0	0	0
취부홀 개수		N	4	5	5	6	6	7	7	8	8	9	10	11	12	13	14	15
본체 중량 [kg]			14.6	15.5	16.3	17.2	18.1	18.9	19.8	20.6	21.5	23.2	24.9	26.7	28.4	30.1	31.8	33.5

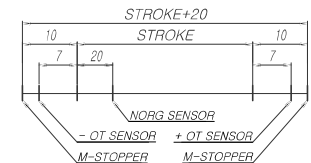
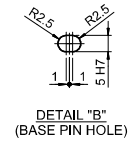
#1 기계 여유 스트로크이며 최대기계 스트로크입니다.

상세도



Type	a	b	c
A	M6	80	100
B	M5	50	70

Reducer Mounting Dimension Table



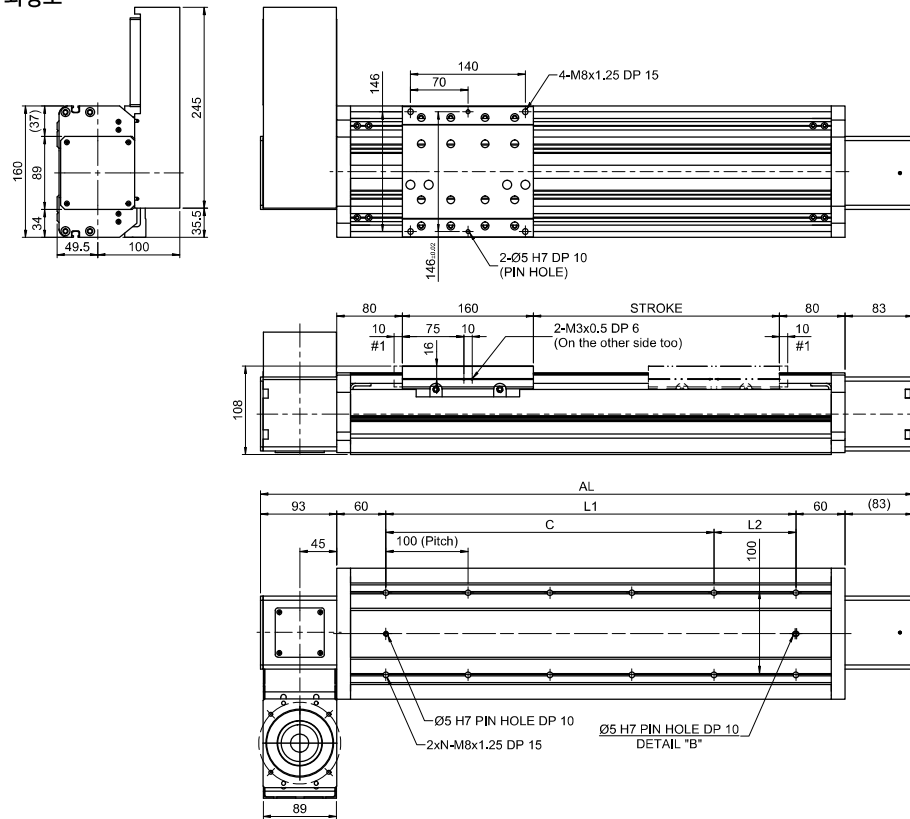
* 스트로크 개념도 *
(표준센서: EE-SX674 사용시)

1300	1400	1500	1600	1700	1800	1900	2000	2100	2200	2300	2400	2500	2600	2700	2800	2900	3000	3100	3200	3300	3400	3500	3600
1320	1420	1520	1620	1720	1820	1920	2020	2120	2220	2320	2420	2520	2620	2720	2820	2920	3020	3120	3220	3320	3420	3520	3620
1600																							
800																							
1796	1896	1996	2096	2196	2296	2396	2496	2596	2696	2796	2896	2996	3096	3196	3296	3396	3496	3596	3696	3796	3896	3996	4096
1500	1600	1700	1800	1900	2000	2100	2200	2300	2400	2500	2600	2700	2800	2900	3000	3100	3200	3300	3400	3500	3600	3700	3800
1500	1600	1700	1800	1900	2000	2100	2200	2300	2400	2500	2600	2700	2800	2900	3000	3100	3200	3300	3400	3500	3600	3700	3800
0	0	0	0	0	0	0	0	0	0	0	0	0	0	0	0	0	0	0	0	0	0	0	0
16	17	18	19	20	21	22	23	24	25	26	27	28	29	30	31	32	33	34	35	36	37	38	39
35.2	37	38.7	40.4	42.1	43.8	45.5	47.3	49	50.7	52.4	54.1	55.8	57.6	59.3	61	62.7	64.4	66.1	67.9	69.6	71.3	73	74.7

SAB16

일반형 AL COVER 커버 [좌,우] 병렬형 벽면 (750W)

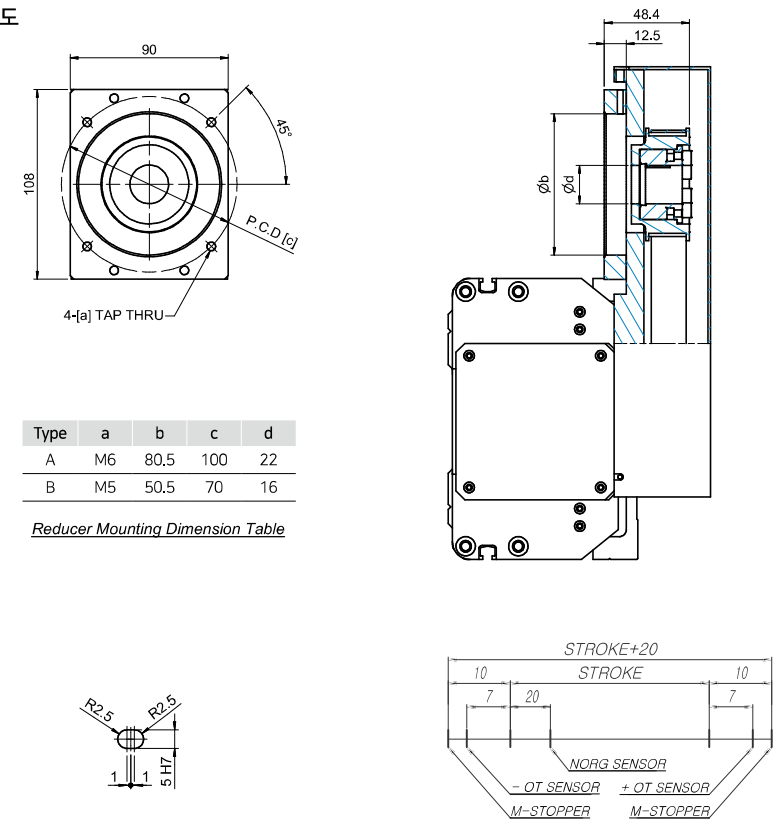
외형도



스트로크[mm] (최대스트로크)			0100 [0120]	0150 [0170]	0200 [0220]	0250 [0270]	0300 [0320]	0350 [0370]	0400 [0420]	0450 [0470]	0500 [0520]	0600 [0620]	0700 [0720]	0800 [0820]	0900 [0920]	1000 [1020]	1100 [1120]	1200 [1220]
최고속도 [mm/s]	감속비	05	1600															
		10	800															
치수 [mm]	AL		596	646	696	746	796	846	896	946	996	1096	1196	1296	1396	1496	1596	1696
	L1		300	350	400	450	500	550	600	650	700	800	900	1000	1100	1200	1300	1400
	C		300	300	400	400	500	500	600	600	700	800	900	1000	1100	1200	1300	1400
	L2		0	50	0	50	0	50	0	50	0	0	0	0	0	0	0	0
취부홀 개수		N	4	5	5	6	6	7	7	8	8	9	10	11	12	13	14	15
본체 중량 [kg]			16.9	17.8	18.6	19.5	20.3	21.2	22.1	22.9	23.8	25.5	27.2	28.9	30.6	32.4	34.1	35.8

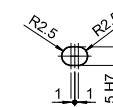
#1 기계 여유 스트로크이며 최대기계 스트로크입니다.

상세도



Type	a	b	c	d
A	M6	80.5	100	22
B	M5	50.5	70	16

Reducer Mounting Dimension Table



DETAIL "B"
(BASE PIN HOLE)

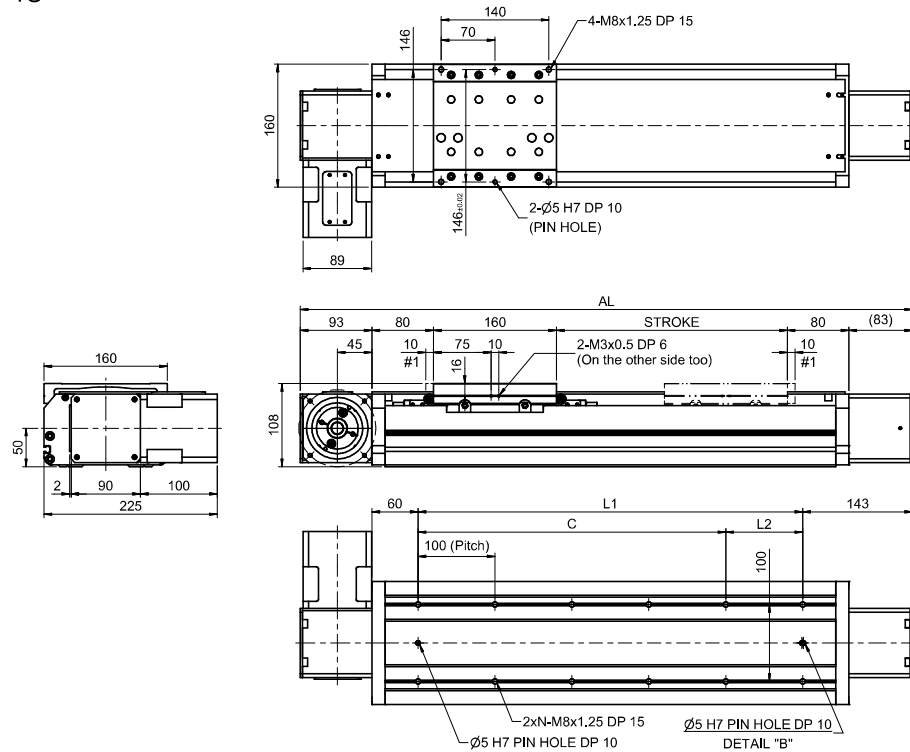
* 스트로크 개념도 *
(표준센서:EE-SX674 사용시)

1300	1400	1500	1600	1700	1800	1900	2000	2100	2200	2300	2400	2500	2600	2700	2800	2900	3000	3100	3200	3300	3400	3500	3600
[1320]	[1420]	[1520]	[1620]	[1720]	[1820]	[1920]	[2020]	[2120]	[2220]	[2320]	[2420]	[2520]	[2620]	[2720]	[2820]	[2920]	[3020]	[3120]	[3220]	[3320]	[3420]	[3520]	[3620]
1600																							
800																							
1796	1896	1996	2096	2196	2296	2396	2496	2596	2696	2796	2896	2996	3096	3196	3296	3396	3496	3596	3696	3796	3896	3996	4096
1500	1600	1700	1800	1900	2000	2100	2200	2300	2400	2500	2600	2700	2800	2900	3000	3100	3200	3300	3400	3500	3600	3700	3800
1500	1600	1700	1800	1900	2000	2100	2200	2300	2400	2500	2600	2700	2800	2900	3000	3100	3200	3300	3400	3500	3600	3700	3800
0	0	0	0	0	0	0	0	0	0	0	0	0	0	0	0	0	0	0	0	0	0	0	0
16	17	18	19	20	21	22	23	24	25	26	27	28	29	30	31	32	33	34	35	36	37	38	39
37.5	39.2	41	42.7	44.4	46.1	47.8	49.5	51.3	53	54.7	56.4	58.1	59.8	61.6	63.3	65	66.7	68.4	70.1	71.9	73.6	75.3	77

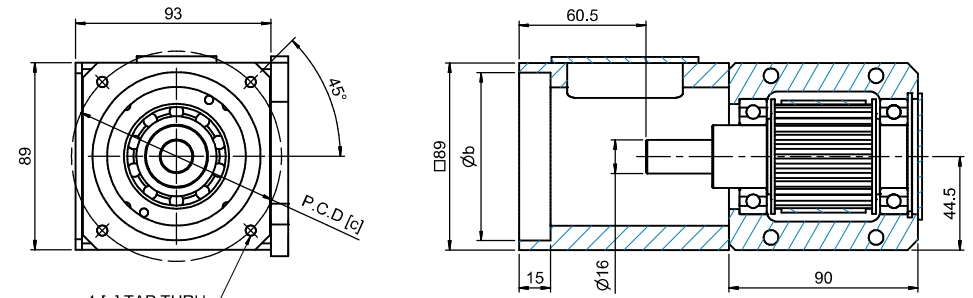
SAB16

일반형 PC COVER 커버 직렬형 (750W)

외형도

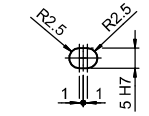


상세도

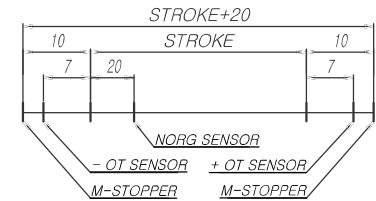


Type	a	b	c
A	M6	80	100
B	M5	50	70

Reducer Mounting Dimension Table



DETAIL "B"
(BASE PIN HOLE)



* 스트로크 개별도 *
(표준센서: EE-SX674 사용시)

스트로크[mm] (최대스트로크)			0100 (0120)	0150 (0170)	0200 (0220)	0250 (0270)	0300 (0320)	0350 (0370)	0400 (0420)	0450 (0470)	0500 (0520)	0600 (0620)	0700 (0720)	0800 (0820)	0900 (0920)	1000 (1020)	1100 (1120)	1200 (1220)	
최고속도 [mm/s]	감속비	05	1600																
		10	800																
치수 [mm]	AL		596	646	696	746	796	846	896	946	996	1096	1196	1296	1396	1496	1596	1696	
	L1		300	350	400	450	500	550	600	650	700	800	900	1000	1100	1200	1300	1400	
	C		300	300	400	400	500	500	600	600	700	800	900	1000	1100	1200	1300	1400	
	L2		0	50	0	50	0	50	0	50	0	0	0	0	0	0	0	0	
취부홀 개수		N	4	5	5	6	6	7	7	8	8	9	10	11	12	13	14	15	
본체 중량 [kg]			14	14.8	15.6	16.4	17.2	18	18.8	19.6	20.4	22	23.5	25.1	26.7	28.3	29.9	31.4	

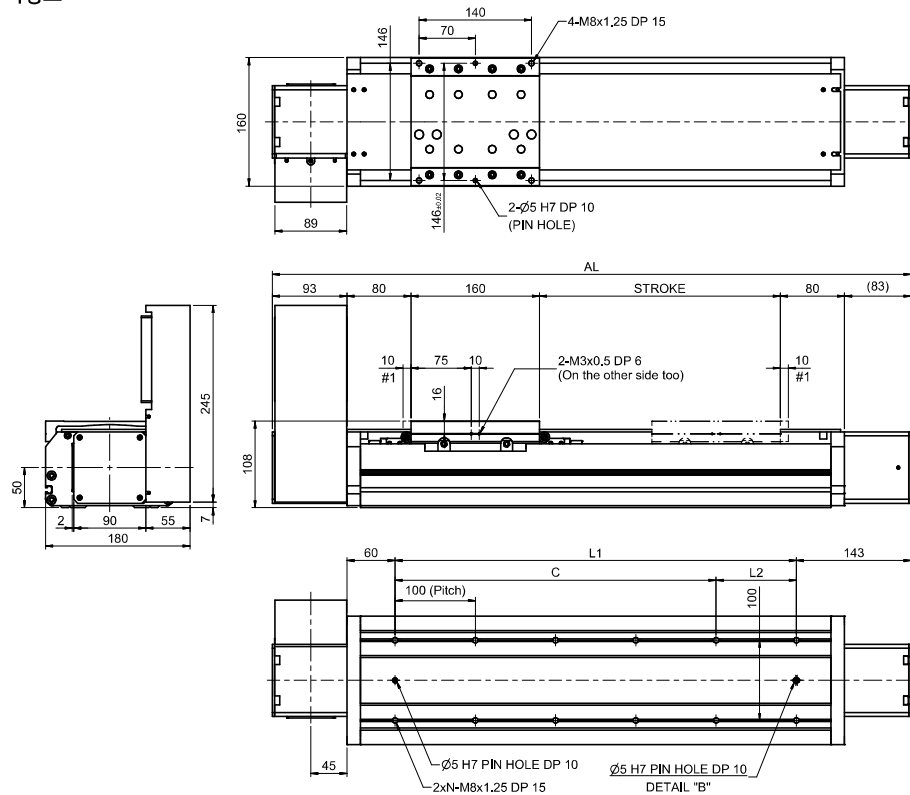
#1 기계 여유 스트로크이며 최대기계 스트로크입니다.

1300 (1320)	1400 (1420)	1500 (1520)	1600 (1620)	1700 (1720)	1800 (1820)	1900 (1920)	2000 (2020)	2100 (2120)	2200 (2220)	2300 (2320)	2400 (2420)	2500 (2520)	2600 (2620)	2700 (2720)	2800 (2820)	2900 (2920)	3000 (3020)	3100 (3120)	3200 (3220)	3300 (3320)	3400 (3420)	3500 (3520)	3600 (3620)
1600																							
800																							
1796	1896	1996	2096	2196	2296	2396	2496	2596	2696	2796	2896	2996	3096	3196	3296	3396	3496	3596	3696	3796	3896	3996	4096
1500	1600	1700	1800	1900	2000	2100	2200	2300	2400	2500	2600	2700	2800	2900	3000	3100	3200	3300	3400	3500	3600	3700	3800
1500	1600	1700	1800	1900	2000	2100	2200	2300	2400	2500	2600	2700	2800	2900	3000	3100	3200	3300	3400	3500	3600	3700	3800
0	0	0	0	0	0	0	0	0	0	0	0	0	0	0	0	0	0	0	0	0	0	0	0
16	17	18	19	20	21	22	23	24	25	26	27	28	29	30	31	32	33	34	35	36	37	38	39
33	34.6	36.2	37.8	39.4	40.9	42.5	44.1	45.7	47.3	48.8	50.4	52	53.6	55.2	56.7	58.3	59.9	61.5	63.1	64.6	66.2	67.8	69.4

SAB16

일반형 PC COVER 커버 [좌,우] 병렬형 (750W)

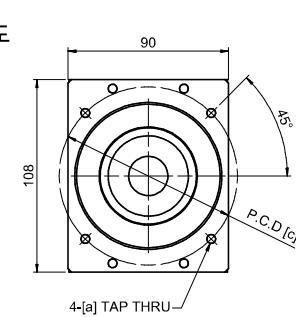
외형도



스트로크[mm] (최대스트로크)			0100 [0120]	0150 [0170]	0200 [0220]	0250 [0270]	0300 [0320]	0350 [0370]	0400 [0420]	0450 [0470]	0500 [0520]	0600 [0620]	0700 [0720]	0800 [0820]	0900 [0920]	1000 [1020]	1100 [1120]	1200 [1220]
최고속도 [mm/s]	감속비	05	1600															
		10	800															
치수 [mm]	AL		596	646	696	746	796	846	896	946	996	1096	1196	1296	1396	1496	1596	1696
	L1		300	350	400	450	500	550	600	650	700	800	900	1000	1100	1200	1300	1400
	C		300	300	400	400	500	500	600	600	700	800	900	1000	1100	1200	1300	1400
	L2		0	50	0	50	0	50	0	50	0	0	0	0	0	0	0	0
취부홀 개수		N	4	5	5	6	6	7	7	8	8	9	10	11	12	13	14	15
본체 중량 [kg]			16.3	17.1	17.9	18.7	19.5	20.3	21.1	21.9	22.7	24.2	25.8	27.4	29	30.6	32.1	33.7

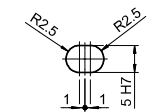
#1 기계 여유 스트로크이며 최대기계 스트로크입니다.

상세도

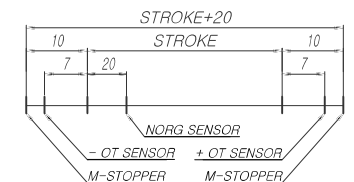
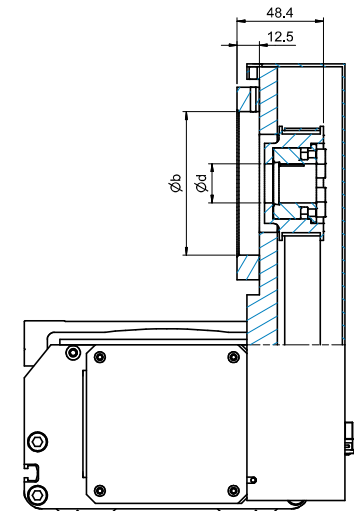


Type	a	b	c	d
A	M6	80.5	100	22
B	M5	50.5	70	16

Reducer Mounting Dimension Table



DETAIL "B"
(BASE PIN HOLE)



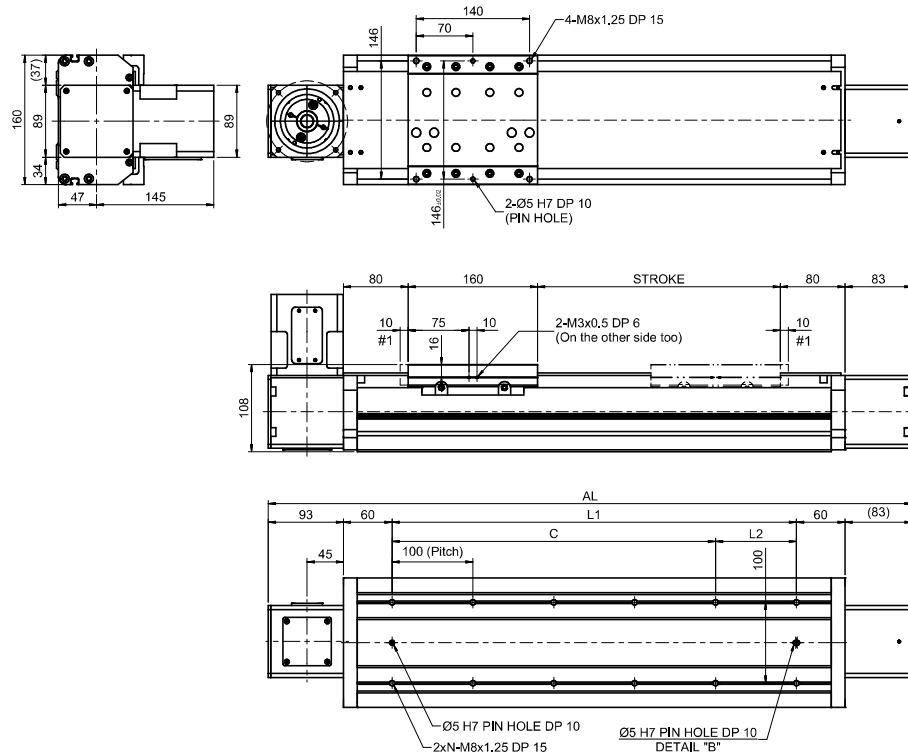
* 스트로크 개념도 *
(표준센서: EE-SX674 사용시)

1300	1400	1500	1600	1700	1800	1900	2000	2100	2200	2300	2400	2500	2600	2700	2800	2900	3000	3100	3200	3300	3400	3500	3600
[1320]	[1420]	[1520]	[1620]	[1720]	[1820]	[1920]	[2020]	[2120]	[2220]	[2320]	[2420]	[2520]	[2620]	[2720]	[2820]	[2920]	[3020]	[3120]	[3220]	[3320]	[3420]	[3520]	[3620]
1600																							
800																							
1796	1896	1996	2096	2196	2296	2396	2496	2596	2696	2796	2896	2996	3096	3196	3296	3396	3496	3596	3696	3796	3896	3996	4096
1500	1600	1700	1800	1900	2000	2100	2200	2300	2400	2500	2600	2700	2800	2900	3000	3100	3200	3300	3400	3500	3600	3700	3800
1500	1600	1700	1800	1900	2000	2100	2200	2300	2400	2500	2600	2700	2800	2900	3000	3100	3200	3300	3400	3500	3600	3700	3800
0	0	0	0	0	0	0	0	0	0	0	0	0	0	0	0	0	0	0	0	0	0	0	0
16	17	18	19	20	21	22	23	24	25	26	27	28	29	30	31	32	33	34	35	36	37	38	39
35.3	36.9	38.5	40.1	41.6	43.2	44.8	46.4	48	49.5	51.1	52.7	54.3	55.9	57.4	59	60.6	62.2	63.8	65.4	66.9	68.5	70.1	71.7

SAB16

일반형 PC COVER 커버 직렬형 벽면 (750W)

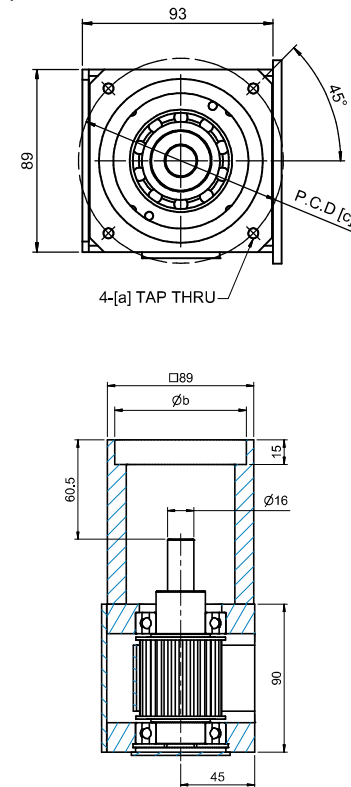
외형도



스트로크[mm] (최대스트로크)			0100 (0120)	0150 (0170)	0200 (0220)	0250 (0270)	0300 (0320)	0350 (0370)	0400 (0420)	0450 (0470)	0500 (0520)	0600 (0620)	0700 (0720)	0800 (0820)	0900 (0920)	1000 (1020)	1100 (1120)	1200 (1220)
최고속도 [mm/s]	감속비	05	1600															
		10	800															
치수 [mm]	AL		596	646	696	746	796	846	896	946	996	1096	1196	1296	1396	1496	1596	1696
	L1		300	350	400	450	500	550	600	650	700	800	900	1000	1100	1200	1300	1400
	C		300	300	400	400	500	500	600	600	700	800	900	1000	1100	1200	1300	1400
	L2		0	50	0	50	0	50	0	50	0	0	0	0	0	0	0	0
취부홀 개수	N		4	5	5	6	6	7	7	8	8	9	10	11	12	13	14	15
본체 중량 [kg]			14	14.8	15.6	16.4	17.2	18	18.8	19.6	20.4	22	23.5	25.1	26.7	28.3	29.9	31.4

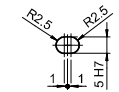
#1 기계 여유 스트로크이며 최대기계 스트로크입니다.

상세도

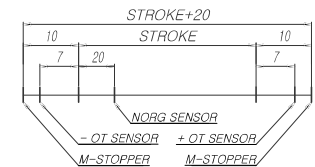


Type	a	b	c
A	M6	80	100
B	M5	50	70

Reducer Mounting Dimension Table



DETAIL "B"
(BASE PIN HOLE)



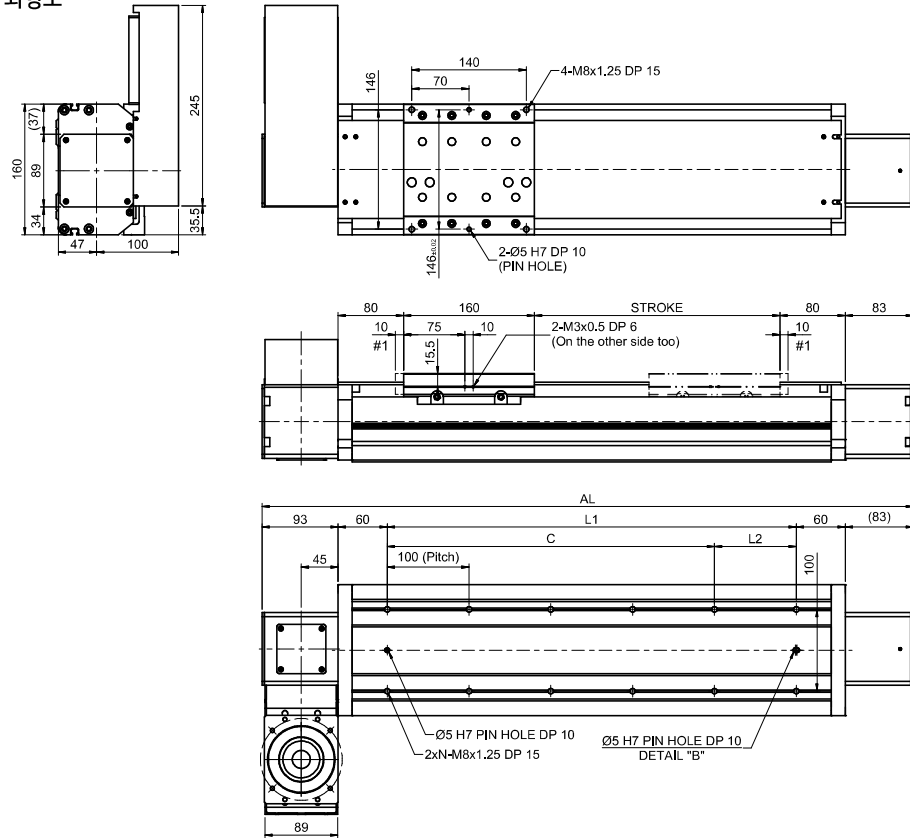
* 스트로크 개념도 *

1300 [1320]	1400 [1420]	1500 [1520]	1600 [1620]	1700 [1720]	1800 [1820]	1900 [1920]	2000 [2020]	2100 [2120]	2200 [2220]	2300 [2320]	2400 [2420]	2500 [2520]	2600 [2620]	2700 [2720]	2800 [2820]	2900 [2920]	3000 [3020]	3100 [3120]	3200 [3220]	3300 [3320]	3400 [3420]	3500 [3520]	3600 [3620]
1600																							
800																							
1796	1896	1996	2096	2196	2296	2396	2496	2596	2696	2796	2896	2996	3096	3196	3296	3396	3496	3596	3696	3796	3896	3996	4096
1500	1600	1700	1800	1900	2000	2100	2200	2300	2400	2500	2600	2700	2800	2900	3000	3100	3200	3300	3400	3500	3600	3700	3800
1500	1600	1700	1800	1900	2000	2100	2200	2300	2400	2500	2600	2700	2800	2900	3000	3100	3200	3300	3400	3500	3600	3700	3800
0	0	0	0	0	0	0	0	0	0	0	0	0	0	0	0	0	0	0	0	0	0	0	0
16	17	18	19	20	21	22	23	24	25	26	27	28	29	30	31	32	33	34	35	36	37	38	39
33	34.6	36.2	37.8	39.4	40.9	42.5	44.1	45.7	47.3	48.8	50.4	52	53.6	55.2	56.7	58.3	59.9	61.5	63.1	64.6	66.2	67.8	69.4

SAB16

일반형 PC COVER 커버 [좌,우] 병렬형 벽면 (750W)

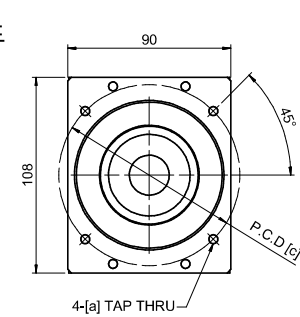
외형도



스트로크[mm] (최대스트로크)		0100 (0120)	0150 (0170)	0200 (0220)	0250 (0270)	0300 (0320)	0350 (0370)	0400 (0420)	0450 (0470)	0500 (0520)	0600 (0620)	0700 (0720)	0800 (0820)	0900 (0920)	1000 (1020)	1100 (1120)	1200 (1220)
최고속도 [mm/s]	감속비	1600															
	10	800															
치수 [mm]	AL	596	646	696	746	796	846	896	946	996	1096	1196	1296	1396	1496	1596	1696
	L1	300	350	400	450	500	550	600	650	700	800	900	1000	1100	1200	1300	1400
	C	300	300	400	400	500	500	600	600	700	800	900	1000	1100	1200	1300	1400
	L2	0	50	0	50	0	50	0	50	0	0	0	0	0	0	0	0
취부홀 개수	N	4	5	5	6	6	7	7	8	8	9	10	11	12	13	14	15
본체 중량 [kg]		16.3	17.1	17.9	18.7	19.5	20.3	21.1	21.9	22.7	24.2	25.8	27.4	29	30.6	32.1	33.7

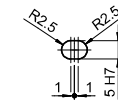
#1 기계 여유 스트로크이며 최대기계 스트로크입니다.

상세도

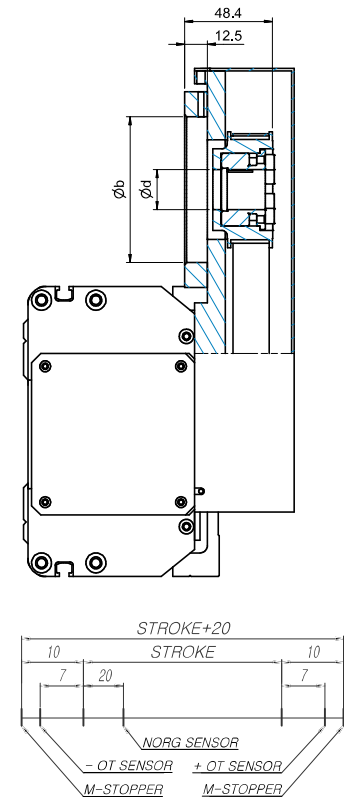


Type	a	b	c	d
A	M6	80.5	100	22
B	M5	50.5	70	16

Reducer Mounting Dimension Table



DETAIL "B"
(BASE PIN HOLE)



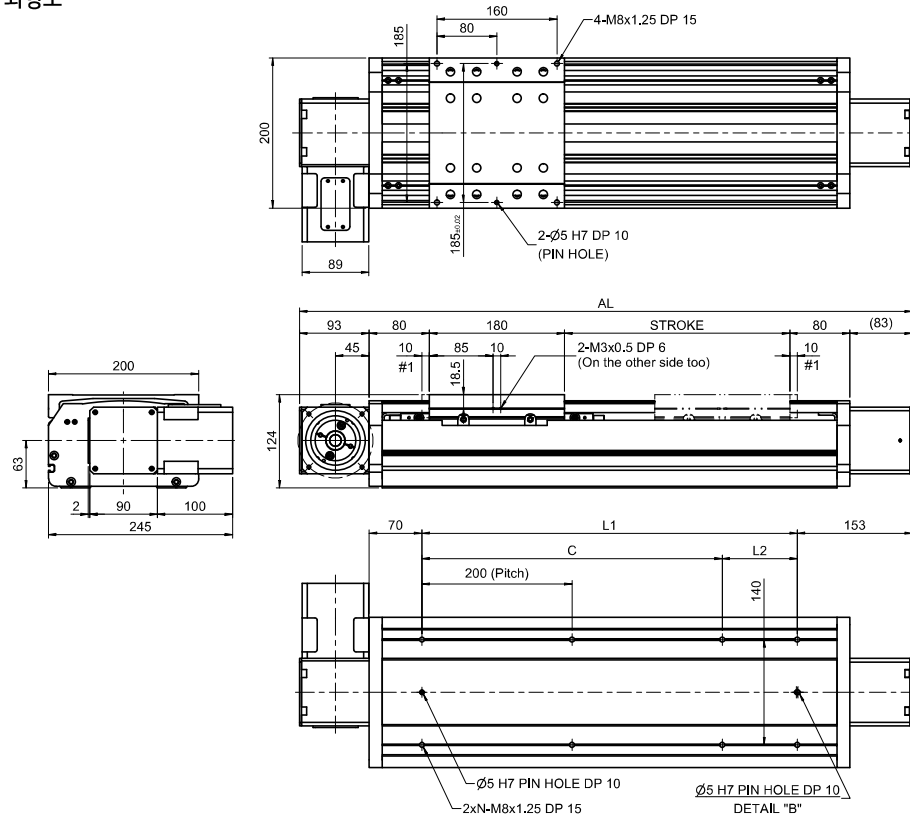
* 스트로크 개별도 *
(표준센서: EE-SX674 사용시)

1300 (1320)	1400 (1420)	1500 (1520)	1600 (1620)	1700 (1720)	1800 (1820)	1900 (1920)	2000 (2020)	2100 (2120)	2200 (2220)	2300 (2320)	2400 (2420)	2500 (2520)	2600 (2620)	2700 (2720)	2800 (2820)	2900 (2920)	3000 (3020)	3100 (3120)	3200 (3220)	3300 (3320)	3400 (3420)	3500 (3520)	3600 (3620)
1600																							
800																							
1796	1896	1996	2096	2196	2296	2396	2496	2596	2696	2796	2896	2996	3096	3196	3296	3396	3496	3596	3696	3796	3896	3996	4096
1500	1600	1700	1800	1900	2000	2100	2200	2300	2400	2500	2600	2700	2800	2900	3000	3100	3200	3300	3400	3500	3600	3700	3800
1500	1600	1700	1800	1900	2000	2100	2200	2300	2400	2500	2600	2700	2800	2900	3000	3100	3200	3300	3400	3500	3600	3700	3800
0	0	0	0	0	0	0	0	0	0	0	0	0	0	0	0	0	0	0	0	0	0	0	0
16	17	18	19	20	21	22	23	24	25	26	27	28	29	30	31	32	33	34	35	36	37	38	39
35.3	36.9	38.5	40.1	41.6	43.2	44.8	46.4	48	49.5	51.1	52.7	54.3	55.9	57.4	59	60.6	62.2	63.8	65.4	66.9	68.5	70.1	71.7

SAB20

일반형 AL COVER 커버 직렬형 (750W)

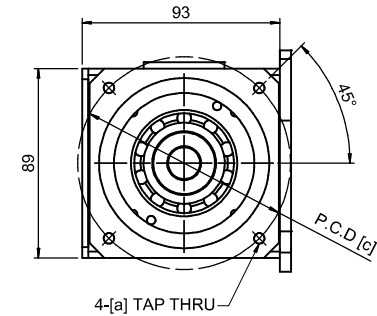
외형도



스트로크[mm] (최대스트로크)			0100 (0120)	0150 (0170)	0200 (0220)	0250 (0270)	0300 (0320)	0350 (0370)	0400 (0420)	0450 (0470)	0500 (0520)	0600 (0620)	0700 (0720)	0800 (0820)	0900 (0920)	1000 (1020)	1100 (1120)	1200 (1220)	
최고속도 [mm/s]	감속비	05	1600																
		10	800																
치수 [mm]	AL		616	666	716	766	816	866	916	966	1016	1116	1216	1316	1416	1516	1616	1716	
	L1		300	350	400	450	500	550	600	650	700	800	900	1000	1100	1200	1300	1400	
	C		200	200	400	400	400	400	600	600	600	600	800	800	1000	1000	1200	1200	1400
	L2		100	150	0	50	100	150	0	50	100	0	100	0	100	0	100	0	
취부홀 개수		N	3	3	3	4	4	4	4	5	5	5	6	6	7	7	8	8	
본체 중량 [kg]			20.2	21.4	22.6	23.8	25.1	26.3	27.5	28.7	29.9	32.4	34.8	37.2	39.7	42.1	44.5	47	

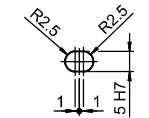
#1 기계 여유 스트로크이며 최대기계 스트로크입니다.

상세도

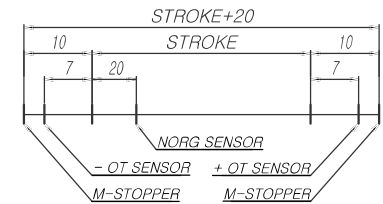
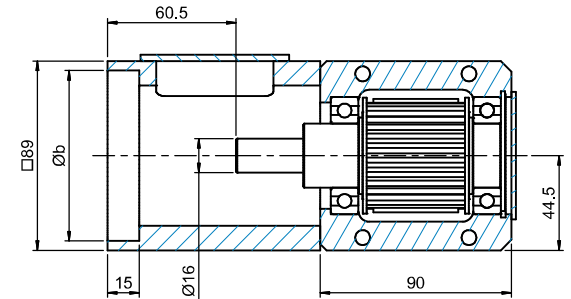


Type	a	b	c
A	M6	80	100
B	M5	50	70

Reducer Mounting Dimension Table



DETAIL "B"
(BASE PIN HOLE)



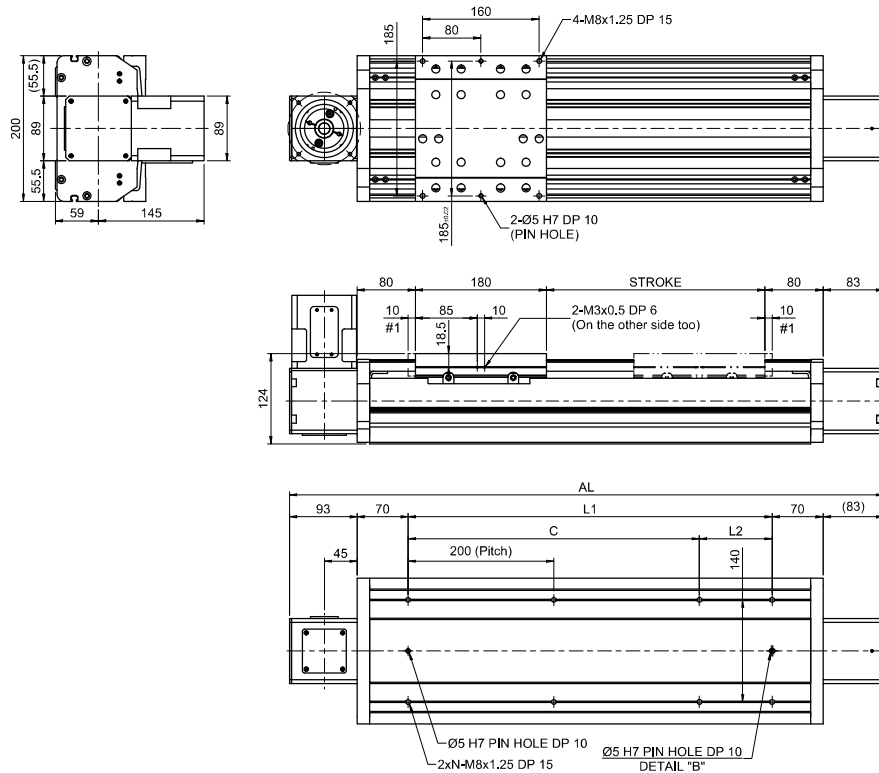
* 스트로크 개념도 *
(표준센서:EE-SX674 사용시)

1300 [1320]	1400 [1420]	1500 [1520]	1600 [1620]	1700 [1720]	1800 [1820]	1900 [1920]	2000 [2020]	2100 [2120]	2200 [2220]	2300 [2320]	2400 [2420]	2500 [2520]	2600 [2620]	2700 [2720]	2800 [2820]	2900 [2920]	3000 [3020]	3100 [3120]	3200 [3220]	3300 [3320]	3400 [3420]	3500 [3520]	3600 [3620]
1600																							
800																							
1816	1916	2016	2116	2216	2316	2416	2516																
1500	1600	1700	1800	1900	2000	2100	2200																
1400	1600	1600	1800	1800	2000	2000	2200																
100	0	100	0	100	0	100	0																
9	9	10	10	11	11	12	12																
49.4	51.8	54.3	56.7	59.1	61.6	64	66.4																

SAB20

일반형 AL COVER 커버 직렬형 벽면 (750W)

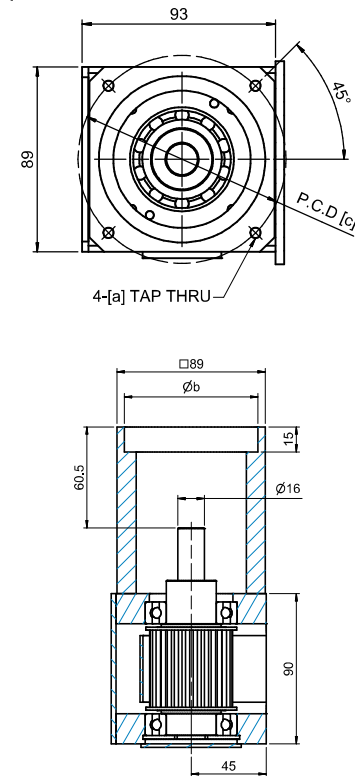
외형도



스트로크[mm] (최대스트로크)			0100 (0120)	0150 (0170)	0200 (0220)	0250 (0270)	0300 (0320)	0350 (0370)	0400 (0420)	0450 (0470)	0500 (0520)	0600 (0620)	0700 (0720)	0800 (0820)	0900 (0920)	1000 (1020)	1100 (1120)	1200 (1220)	
최고속도 [mm/s]	감속비	05	1600																
		10	800																
치수 [mm]	AL		616	666	716	766	816	866	916	966	1016	1116	1216	1316	1416	1516	1616	1716	
	L1		300	350	400	450	500	550	600	650	700	800	900	1000	1100	1200	1300	1400	
	C		200	200	400	400	400	400	600	600	600	800	800	1000	1000	1200	1200	1400	
	L2		100	150	0	50	100	150	0	50	100	0	100	0	100	0	100	0	
취부홀 개수		N	3	3	3	4	4	4	4	5	5	5	6	6	7	7	8	8	
본체 중량 [kg]			20.2	21.4	22.6	23.8	25.1	26.3	27.5	28.7	29.9	32.4	34.8	37.2	39.7	42.1	44.5	47	

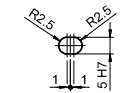
#1 기계 여유 스트로크이며 최대기계 스트로크입니다.

상세도

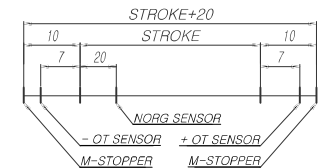


Type	a	b	c
A	M6	80	100
B	M5	50	70

Reducer Mounting Dimension Table



DETAIL "B"
(BASE PIN HOLE)



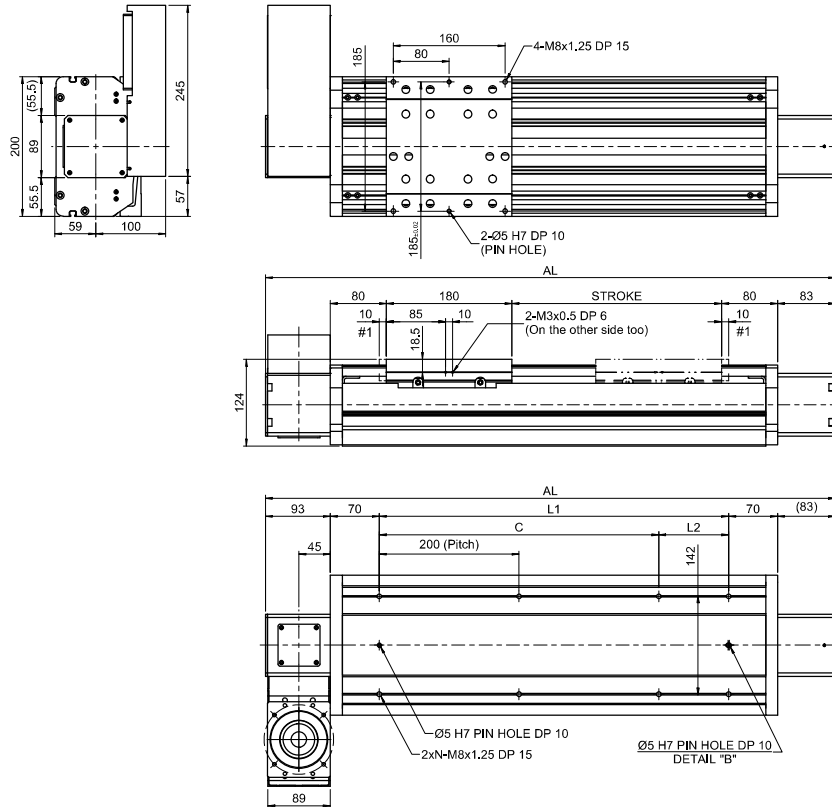
* 스트로크 개념도 *
(표준센서:EE-SX674 사용시)

1300 [1320]	1400 [1420]	1500 [1520]	1600 [1620]	1700 [1720]	1800 [1820]	1900 [1920]	2000 [2020]	2100 [2120]	2200 [2220]	2300 [2320]	2400 [2420]	2500 [2520]	2600 [2620]	2700 [2720]	2800 [2820]	2900 [2920]	3000 [3020]	3100 [3120]	3200 [3220]	3300 [3320]	3400 [3420]	3500 [3520]	3600 [3620]
1600																							
800																							
1816	1916	2016	2116	2216	2316	2416	2516	2616	2716	2816	2916	3016	3116	3216	3316	3416	3516	3616	3716	3816	3916	4016	4116
1500	1600	1700	1800	1900	2000	2100	2200	2300	2400	2500	2600	2700	2800	2900	3000	3100	3200	3300	3400	3500	3600	3700	3800
1400	1600	1600	1800	1800	2000	2000	2200	2200	2400	2400	2600	2600	2800	2800	3000	3000	3200	3200	3400	3400	3600	3600	3800
100	0	100	0	100	0	100	0	100	0	100	0	100	0	100	0	100	0	100	0	100	0	100	0
9	9	10	10	11	11	12	12	13	13	14	14	15	15	16	16	17	17	18	18	19	19	20	20
49.4	51.8	54.3	56.7	59.1	61.6	64	66.4	68.9	71.3	73.7	76.2	78.6	81	83.5	85.9	88.4	90.8	93.2	95.7	98.1	100.5	103	105.4

SAB20

일반형 AL COVER 커버 [좌,우] 병렬형 벽면 (750W)

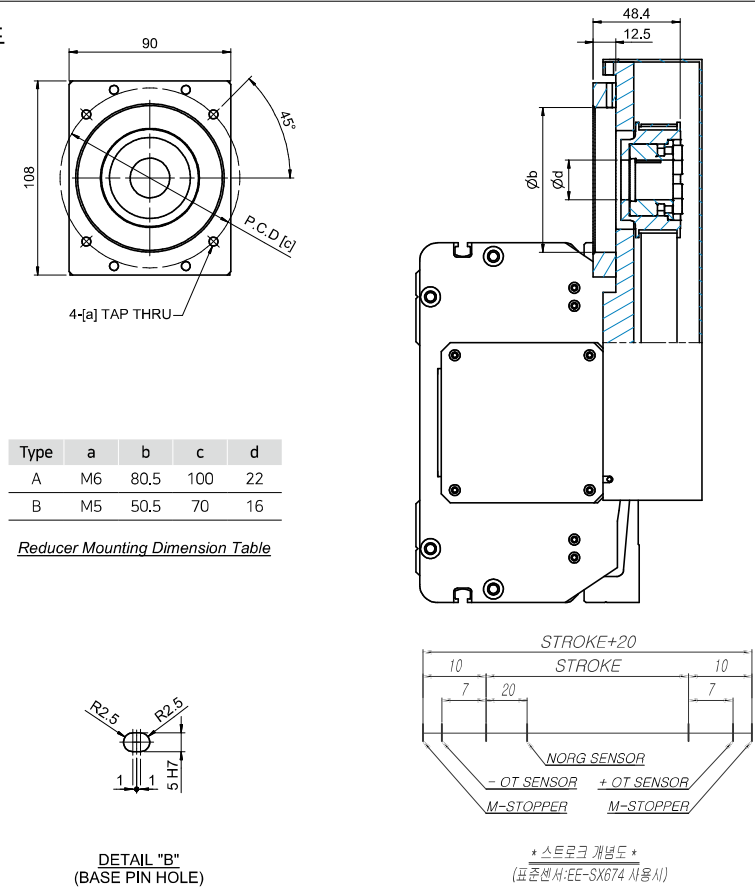
외형도



스트로크[mm] (최대스트로크)			0100 (0120)	0150 (0170)	0200 (0220)	0250 (0270)	0300 (0320)	0350 (0370)	0400 (0420)	0450 (0470)	0500 (0520)	0600 (0620)	0700 (0720)	0800 (0820)	0900 (0920)	1000 (1020)	1100 (1120)	1200 (1220)	
최고속도 [mm/s]	감속비	05	1600																
		10	800																
치수 [mm]	AL		616	666	716	766	816	866	916	966	1016	1116	1216	1316	1416	1516	1616	1716	
	L1		300	350	400	450	500	550	600	650	700	800	900	1000	1100	1200	1300	1400	
	C		200	200	400	400	400	400	600	600	600	800	800	1000	1000	1200	1200	1400	
	L2		100	150	0	50	100	150	0	50	100	0	100	0	100	0	100	0	
취부홀 개수		N	3	3	3	4	4	4	4	5	5	5	6	6	7	7	8	8	
본체 중량 [kg]			22.4	23.7	24.9	26.1	27.3	28.5	29.7	31	32.2	34.6	37.1	39.5	41.9	44.4	46.8	49.2	

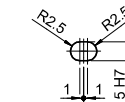
#1 기계 여유 스트로크이며 최대기계 스트로크입니다.

상세도



Type	a	b	c	d
A	M6	80.5	100	22
B	M5	50.5	70	16

Reducer Mounting Dimension Table



DETAIL "B"
(BASE PIN HOLE)

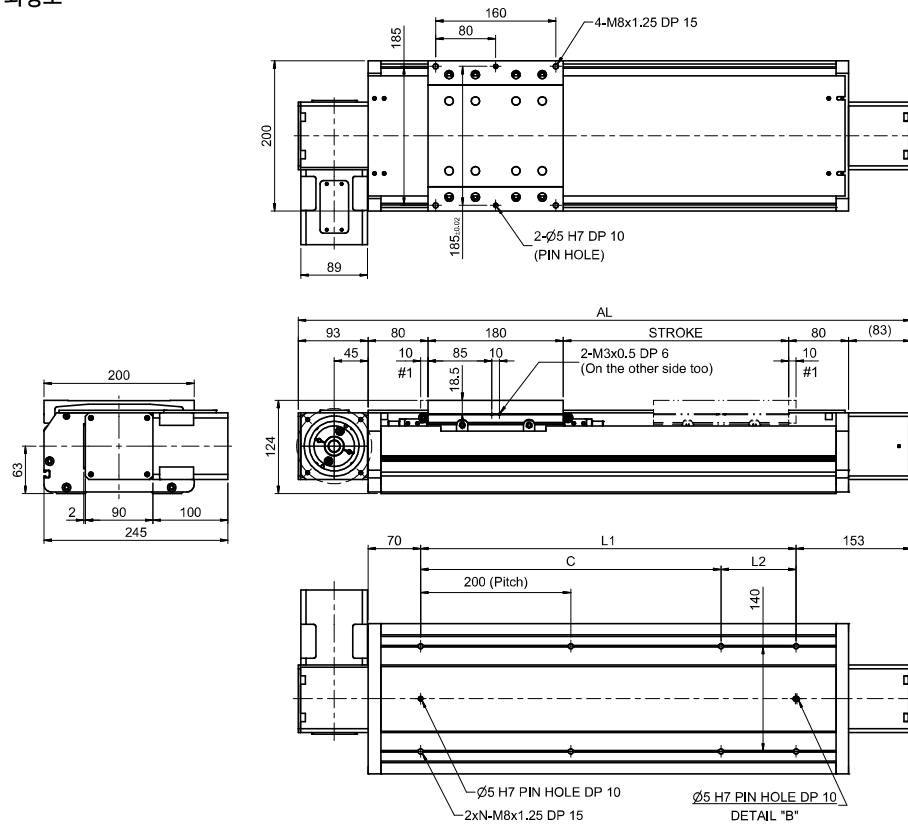
* 스트로크 개별도 *
(표준센서:EE-SX674 사용시)

1300 (1320)	1400 (1420)	1500 (1520)	1600 (1620)	1700 (1720)	1800 (1820)	1900 (1920)	2000 (2020)	2100 (2120)	2200 (2220)	2300 (2320)	2400 (2420)	2500 (2520)	2600 (2620)	2700 (2720)	2800 (2820)	2900 (2920)	3000 (3020)	3100 (3120)	3200 (3220)	3300 (3320)	3400 (3420)	3500 (3520)	3600 (3620)
1600																							
800																							
1816	1916	2016	2116	2216	2316	2416	2516	2616	2716	2816	2916	3016	3116	3216	3316	3416	3516	3616	3716	3816	3916	4016	4116
1500	1600	1700	1800	1900	2000	2100	2200	2300	2400	2500	2600	2700	2800	2900	3000	3100	3200	3300	3400	3500	3600	3700	3800
1400	1600	1600	1800	1800	2000	2000	2200	2200	2400	2400	2600	2600	2800	2800	3000	3000	3200	3200	3400	3400	3600	3600	3800
100	0	100	0	100	0	100	0	100	0	100	0	100	0	100	0	100	0	100	0	100	0	100	0
9	9	10	10	11	11	12	12	13	13	14	14	15	15	16	16	17	17	18	18	19	19	20	20
51.7	54.1	56.5	59	61.4	63.8	66.3	68.7	71.1	73.6	76	78.4	80.9	83.3	85.7	88.2	90.6	93	95.5	97.9	100.3	102.8	105.2	107.6

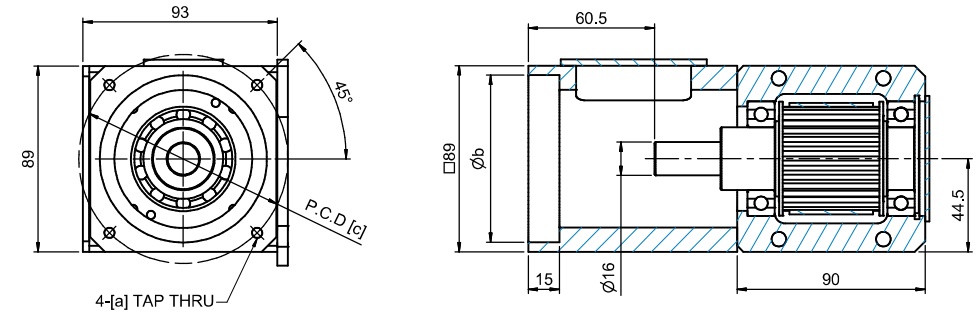
SAB20

일반형 PC COVER 커버 직렬형 (750W)

외형도

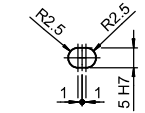


상세도

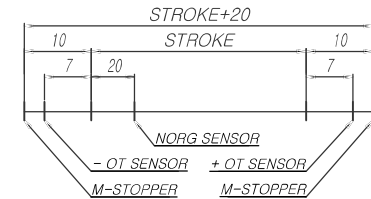


Type	a	c
A	M6	100
B	M5	70

Reducer Mounting Dimension Table



DETAIL "B"
(BASE PIN HOLE)



* 스트로크 개념도 *
(표준센서: EE-SX674 사용시)

스트로크[mm] (최대스트로크)		0100 (0120)	0150 (0170)	0200 (0220)	0250 (0270)	0300 (0320)	0350 (0370)	0400 (0420)	0450 (0470)	0500 (0520)	0600 (0620)	0700 (0720)	0800 (0820)	0900 (0920)	1000 (1020)	1100 (1120)	1200 (1220)
최고속도 [mm/s]	감속비	1600															
		800															
치수 [mm]	AL	616	666	716	766	816	866	916	966	1016	1116	1216	1316	1416	1516	1616	1716
	L1	300	350	400	450	500	550	600	650	700	800	900	1000	1100	1200	1300	1400
	C	200	200	400	400	400	400	600	600	600	800	800	1000	1000	1200	1200	1400
	L2	100	150	0	50	100	150	0	50	100	0	100	0	100	0	100	0
취부홀 개수		N	3	3	3	4	4	4	4	5	5	5	6	6	7	7	8
본체 중량 [kg]		19.1	20.2	21.3	22.4	23.5	24.6	25.7	26.8	27.9	30	32.2	34.4	36.6	38.8	41	43.1

#1 기계 여유 스트로크이며 최대기계 스트로크입니다.

1300 (1320)	1400 (1420)	1500 (1520)	1600 (1620)	1700 (1720)	1800 (1820)	1900 (1920)	2000 (2020)	2100 (2120)	2200 (2220)	2300 (2320)	2400 (2420)	2500 (2520)	2600 (2620)	2700 (2720)	2800 (2820)	2900 (2920)	3000 (3020)	3100 (3120)	3200 (3220)	3300 (3320)	3400 (3420)	3500 (3520)	3600 (3620)
1600																							
800																							
1816	1916	2016	2116	2216	2316	2416	2516	2616	2716	2816	2916	3016	3116	3216	3316	3416	3516	3616	3716	3816	3916	4016	4116
1500	1600	1700	1800	1900	2000	2100	2200	2300	2400	2500	2600	2700	2800	2900	3000	3100	3200	3300	3400	3500	3600	3700	3800
1400	1600	1600	1800	1800	2000	2000	2200	2200	2400	2400	2600	2600	2800	2800	3000	3000	3200	3200	3400	3400	3600	3600	3800
100	0	100	0	100	0	100	0	100	0	100	0	100	0	100	0	100	0	100	0	100	0	100	0
9	9	10	10	11	11	12	12	13	13	14	14	15	15	16	16	17	17	18	18	19	19	20	20
45.3	47.5	49.7	51.9	54.1	56.3	58.4	60.6	62.8	65	67.2	69.4	71.6	73.7	75.9	78.1	80.3	82.5	84.7	86.8	89	91.2	93.4	95.6

일반형 PC COVER 커버 [좌,우] 병렬형 (750W)

Technical drawing of the M8x1.25 DP 15 connector, showing three views: a side view, a front view, and a detail view "B".

Side View Dimensions:

- Overall height: 245
- Bottom flange height: 20
- Bottom flange width: 200
- Bottom flange thickness: 2
- Bottom flange offset: 55
- Bottom flange hole offset: 90
- Bottom flange hole diameter: 63
- Bottom flange hole pitch: 89

Front View Dimensions:

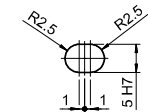
- Overall width: 160
- Pin pitch: 80
- Pin diameter: 4-M8x1.25 DP 15
- Pin hole diameter: 2-ø5 H7 DP 10 (PIN HOLE)
- Pin hole offset: 185
- Pin hole pitch: 185
- Pin hole diameter: 89
- Pin hole offset: 200

Detail View "B" Dimensions:

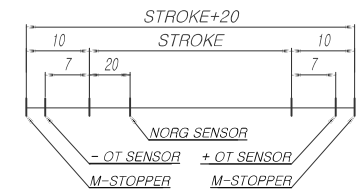
- Overall width: 153
- Pin pitch: 200 (Pitch)
- Pin diameter: 2-M3x0.5 DP 6 (On the other side too)
- Pin hole diameter: 2-ø5 H7 PIN HOLE DP 10
- Pin hole offset: 140
- Pin hole pitch: 140
- Pin hole diameter: 70
- Pin hole offset: 153
- Pin hole diameter: 45
- Pin hole offset: 124

스트로크[mm] (최대스트로크)			0100 (0120)	0150 (0170)	0200 (0220)	0250 (0270)	0300 (0320)	0350 (0370)	0400 (0420)	0450 (0470)	0500 (0520)	0600 (0620)	0700 (0720)	0800 (0820)	0900 (0920)	1000 (1020)	1100 (1120)	1200 (1220)	
최고속도 [mm/s]	감속비	05	1600																
		10	800																
치수 [mm]	AL		616	666	716	766	816	866	916	966	1016	1116	1216	1316	1416	1516	1616	1716	
	L1		300	350	400	450	500	550	600	650	700	800	900	1000	1100	1200	1300	1400	
	C		200	200	400	400	400	400	600	600	600	600	800	800	1000	1000	1200	1200	1400
	L2		100	150	0	50	100	150	0	50	100	0	100	0	100	0	100	0	
취부홀 개수		N	3	3	3	4	4	4	4	5	5	5	6	6	7	7	8	8	
본체 중량 [kg]			21.4	22.5	23.6	24.6	25.7	26.8	27.9	29	30.1	32.3	34.5	36.7	38.8	41	43.2	45.4	

Type	a	b	c	d
A	M6	80.5	100	22
B	M5	50.5	70	16



DETAIL "B"
(BASE PIN HOLE)



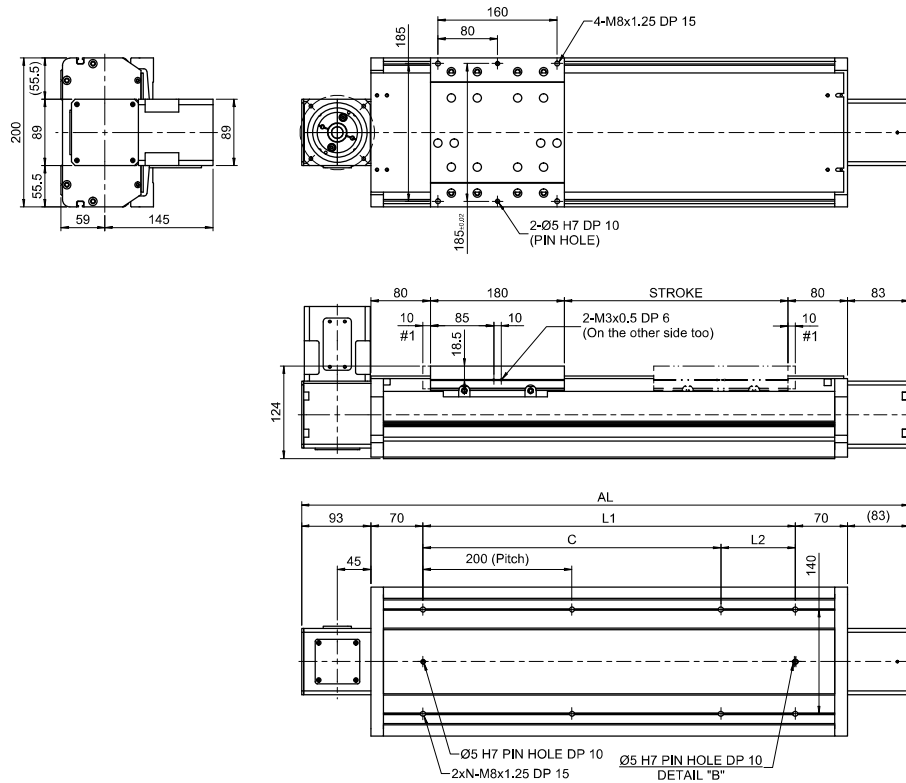
* 스트로크 개념도 *
(표준센서:EE-SX674 사용시)

1300 (1320)	1400 (1420)	1500 (1520)	1600 (1620)	1700 (1720)	1800 (1820)	1900 (1920)	2000 (2020)	2100 (2120)	2200 (2220)	2300 (2320)	2400 (2420)	2500 (2520)	2600 (2620)	2700 (2720)	2800 (2820)	2900 (2920)	3000 (3020)	3100 (3120)	3200 (3220)	3300 (3320)	3400 (3420)	3500 (3520)	3600 (3620)
1600																							
800																							
1816	1916	2016	2116	2216	2316	2416	2516	2616	2716	2816	2916	3016	3116	3216	3316	3416	3516	3616	3716	3816	3916	4016	4116
1500	1600	1700	1800	1900	2000	2100	2200	2300	2400	2500	2600	2700	2800	2900	3000	3100	3200	3300	3400	3500	3600	3700	3800
1400	1600	1600	1800	1800	2000	2000	2200	2200	2400	2400	2600	2600	2800	2800	3000	3000	3200	3200	3400	3400	3600	3600	3800
100	0	100	0	100	0	100	0	100	0	100	0	100	0	100	0	100	0	100	0	100	0	100	0
9	9	10	10	11	11	12	12	13	13	14	14	15	15	16	16	17	17	18	18	19	19	20	20
47.6	49.8	51.9	54.1	56.3	58.5	60.7	62.9	65.1	67.2	69.4	71.6	73.8	76	78.2	80.3	82.5	84.7	86.9	89.1	91.3	93.4	95.6	97.8

SAB20

일반형 PC COVER 커버 직렬형 벽면 (750W)

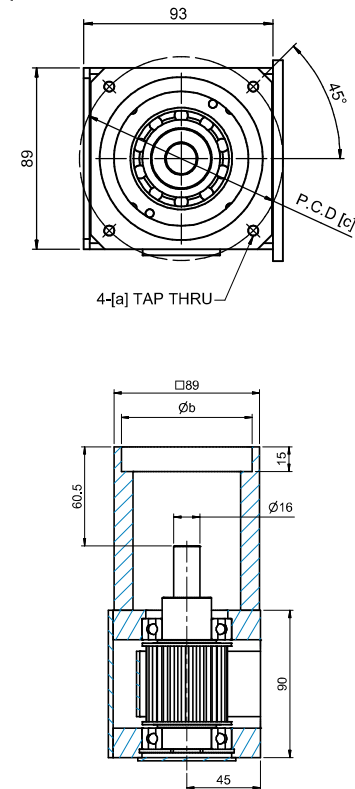
외형도



스트로크[mm] (최대스트로크)			0100 (0120)	0150 (0170)	0200 (0220)	0250 (0270)	0300 (0320)	0350 (0370)	0400 (0420)	0450 (0470)	0500 (0520)	0600 (0620)	0700 (0720)	0800 (0820)	0900 (0920)	1000 (1020)	1100 (1120)	1200 (1220)	
최고속도 [mm/s]	감속비	05	1600																
		10	800																
치수 [mm]	AL		616	666	716	766	816	866	916	966	1016	1116	1216	1316	1416	1516	1616	1716	
	L1		300	350	400	450	500	550	600	650	700	800	900	1000	1100	1200	1300	1400	
	C		200	200	400	400	400	400	600	600	600	600	800	800	1000	1000	1200	1200	1400
	L2		100	150	0	50	100	150	0	50	100	0	100	0	100	0	100	0	
취부홀 개수		N	3	3	3	4	4	4	4	5	5	5	6	6	7	7	8	8	
본체 중량 [kg]			19.1	20.2	21.3	22.4	23.5	24.6	25.7	26.8	27.9	30	32.2	34.4	36.6	38.8	41	43.1	

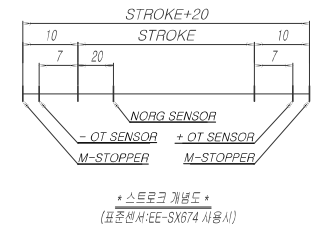
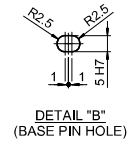
#1 기계 여유 스트로크이며 최대기계 스트로크입니다.

상세도



Type	a	b	c
A	M6	80	100
B	M5	50	70

Reducer Mounting Dimension Table

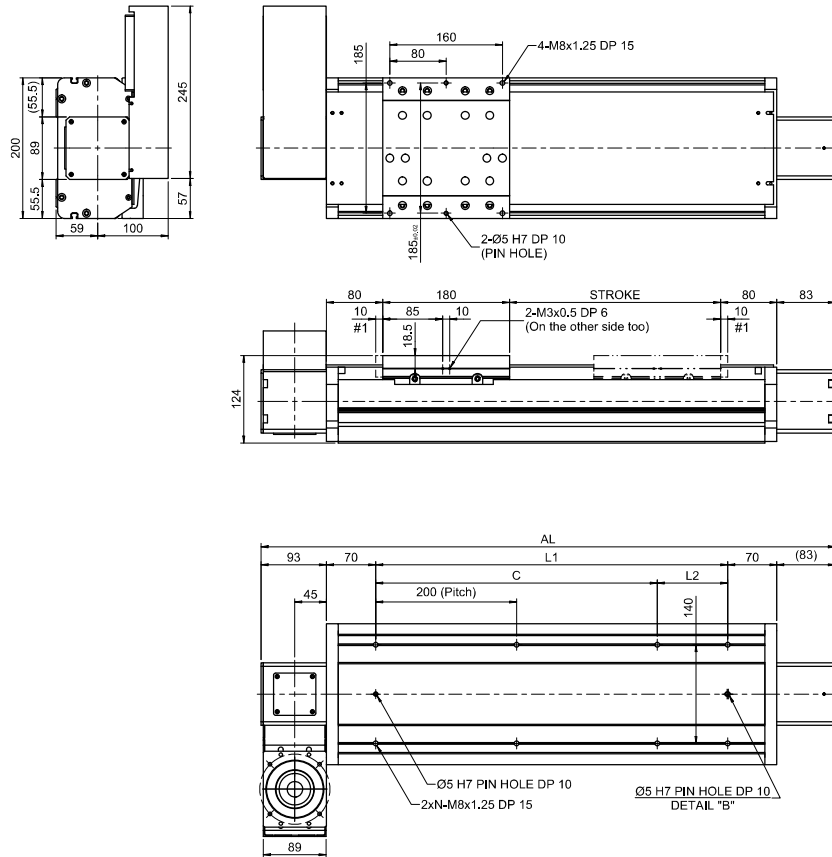


1300 (1320)	1400 (1420)	1500 (1520)	1600 (1620)	1700 (1720)	1800 (1820)	1900 (1920)	2000 (2020)	2100 (2120)	2200 (2220)	2300 (2320)	2400 (2420)	2500 (2520)	2600 (2620)	2700 (2720)	2800 (2820)	2900 (2920)	3000 (3020)	3100 (3120)	3200 (3220)	3300 (3320)	3400 (3420)	3500 (3520)	3600 (3620)
1600																							
800																							
1816	1916	2016	2116	2216	2316	2416	2516	2616	2716	2816	2916	3016	3116	3216	3316	3416	3516	3616	3716	3816	3916	4016	4116
1500	1600	1700	1800	1900	2000	2100	2200	2300	2400	2500	2600	2700	2800	2900	3000	3100	3200	3300	3400	3500	3600	3700	3800
1400	1600	1600	1800	1800	2000	2000	2200	2200	2400	2400	2600	2600	2800	2800	3000	3000	3200	3200	3400	3400	3600	3600	3800
100	0	100	0	100	0	100	0	100	0	100	0	100	0	100	0	100	0	100	0	100	0	100	0
9	9	10	10	11	11	12	12	13	13	14	14	15	15	16	16	17	17	18	18	19	19	20	20
45.3	47.5	49.7	51.9	54.1	56.3	58.4	60.6	62.8	65	67.2	69.4	71.6	73.7	75.9	78.1	80.3	82.5	84.7	86.8	89	91.2	93.4	95.6

SAB20

일반형 PC COVER 커버 [좌,우] 병렬형 벽면 (750W)

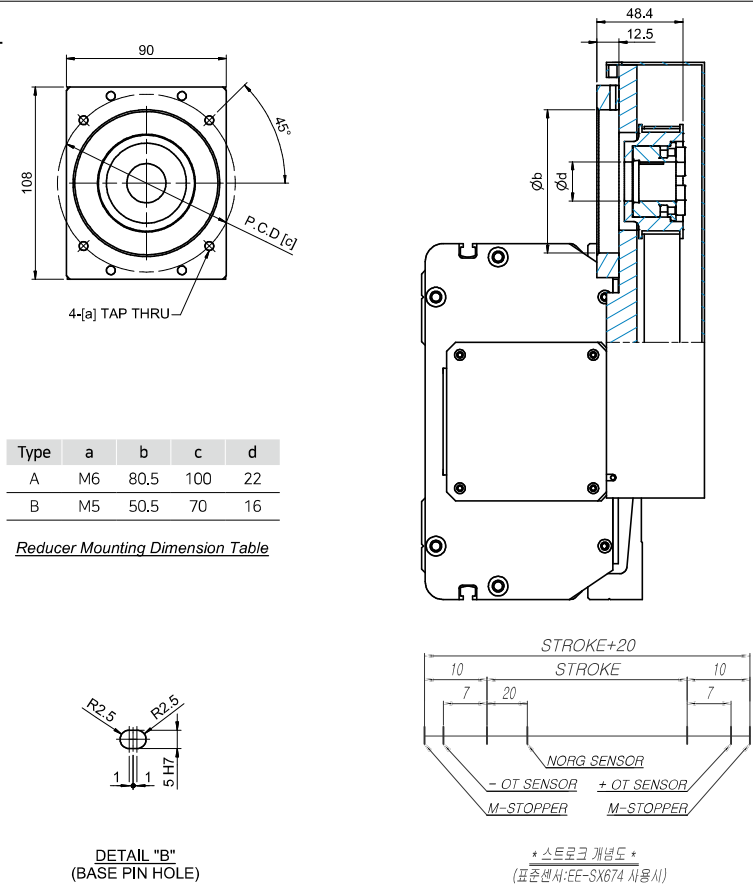
외형도



스트로크[mm] (최대스트로크)			0100 [0120]	0150 [0170]	0200 [0220]	0250 [0270]	0300 [0320]	0350 [0370]	0400 [0420]	0450 [0470]	0500 [0520]	0600 [0620]	0700 [0720]	0800 [0820]	0900 [0920]	1000 [1020]	1100 [1120]	1200 [1220]	
최고속도 [mm/s]	감속비	05	1600																
		10	800																
치수 [mm]	AL		616	666	716	766	816	866	916	966	1016	1116	1216	1316	1416	1516	1616	1716	
	L1		300	350	400	450	500	550	600	650	700	800	900	1000	1100	1200	1300	1400	
	C		200	200	400	400	400	400	600	600	600	600	800	800	1000	1000	1200	1200	1400
	L2		100	150	0	50	100	150	0	50	100	0	100	0	100	0	100	0	
취부홀 개수		N	3	3	3	4	4	4	4	5	5	5	6	6	7	7	8	8	
본체 중량 [kg]			21.4	22.5	23.6	24.6	25.7	26.8	27.9	29	30.1	32.3	34.5	36.7	38.8	41	43.2	45.4	

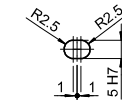
#1 기계 여유 스트로크이며 최대기계 스트로크입니다.

상세도



Type	a	b	c	d
A	M6	80.5	100	22
B	M5	50.5	70	16

Reducer Mounting Dimension Table



DETAIL "B"
(BASE PIN HOLE)

1300	1400	1500	1600	1700	1800	1900	2000	2100	2200	2300	2400	2500	2600	2700	2800	2900	3000	3100	3200	3300	3400	3500	3600
1320	1420	1520	1620	1720	1820	1920	2020	2120	2220	2320	2420	2520	2620	2720	2820	2920	3020	3120	3220	3320	3420	3520	3620
1600																							
800																							
1816	1916	2016	2116	2216	2316	2416	2516	2616	2716	2816	2916	3016	3116	3216	3316	3416	3516	3616	3716	3816	3916	4016	4116
1500	1600	1700	1800	1900	2000	2100	2200	2300	2400	2500	2600	2700	2800	2900	3000	3100	3200	3300	3400	3500	3600	3700	3800
1400	1600	1600	1800	1800	2000	2000	2200	2200	2400	2400	2600	2600	2800	2800	3000	3000	3200	3200	3400	3400	3600	3600	3800
100	0	100	0	100	0	100	0	100	0	100	0	100	0	100	0	100	0	100	0	100	0	100	0
9	9	10	10	11	11	12	12	13	13	14	14	15	15	16	16	17	17	18	18	19	19	20	20
47.6	49.8	51.9	54.1	56.3	58.5	60.7	62.9	65.1	67.2	69.4	71.6	73.8	76	78.2	80.3	82.5	84.7	86.9	89.1	91.3	93.4	95.6	97.8

* 스트로크 개별도 *
(표준센서:EE-SX674 사용시)